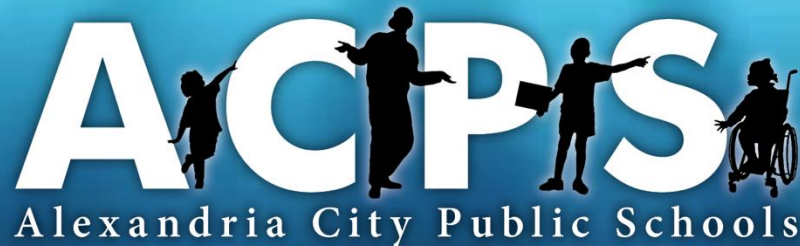


New West End Elementary School Update

School Board Meeting

Thursday, October 27, 2016

7:00 PM



Every Student Succeeds.

Meeting Agenda

- Overview of Capacity Issues
- Timeline
- Outstanding Issues
- Examples of Feasibility Study Floor Plans
- Next Steps

Capacity Adjustments

Status	K-5 Capacity	K-5 FY 16 Enrollment	K-5 Seating Change (Deficit)/ Additions
Current Capacity	6974	7911	-937
New School	638		638
<i>Capacity with New School</i>	<i>7612</i>	<i>7911</i>	<i>-299</i>

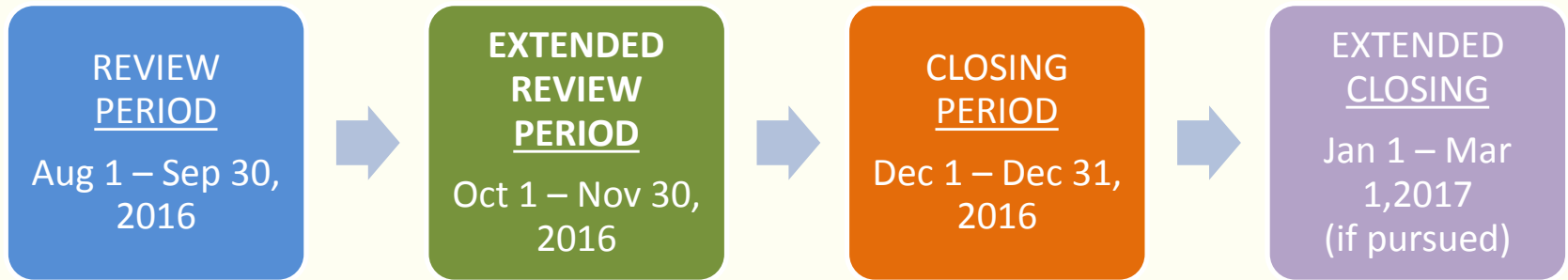
Note: This analysis does not take into consideration any other approved capacity projects.

This building and adjacent garage became the most optimal solution for addressing elementary capacity given its square footage, location on the West End, and general building condition.

New Elementary School at West End

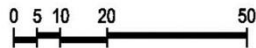


Timeline



- ✓ Review Phase-I ESA from Owner | Aug. 1 – Aug. 5, 2016
- ✓ Building Fireproofing Assessment | Aug. 5, 2016
- ✓ 9.06 Review Submission | Aug. 5, 2016
- ✓ SUP Application | Aug. 5, 2016
- ✓ Complete Building Assessment Report | Aug. 11, 2016
- ✓ Security Review Completed | Sep. 1, 2016
- ✓ 9.06 Review Public Hearing | Sep. 8, 2016
- ✓ Civil Engineer Development of Concepts | Aug. 1 – Sep. 9, 2016
- ✓ Extended Review Period | Oct. 1 – Nov. 30, 2016
- ✓ Feasibility Study Report | Oct. 17, 2016

Floorplan – 1st Floor



NOELKER AND HULL
Architecture Master Planning Interior Design

6 N. East Street, Suite 300 Frederick MD 21701
p 301.662.8611 f 301.662.8611 www.noelkerhull.com

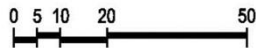
1
FLOOR

4 STORY SCHEME

1701 N. Beaugard Feasibility Study



Floorplan – 3rd Floor



NOELKER AND HULL
Architecture Master Planning Interior Design

6 N. East Street, Suite 300 Frederick MD 21701
p 301.662.8611 f 301.662.8611 www.noelkerhull.com

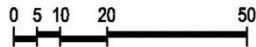
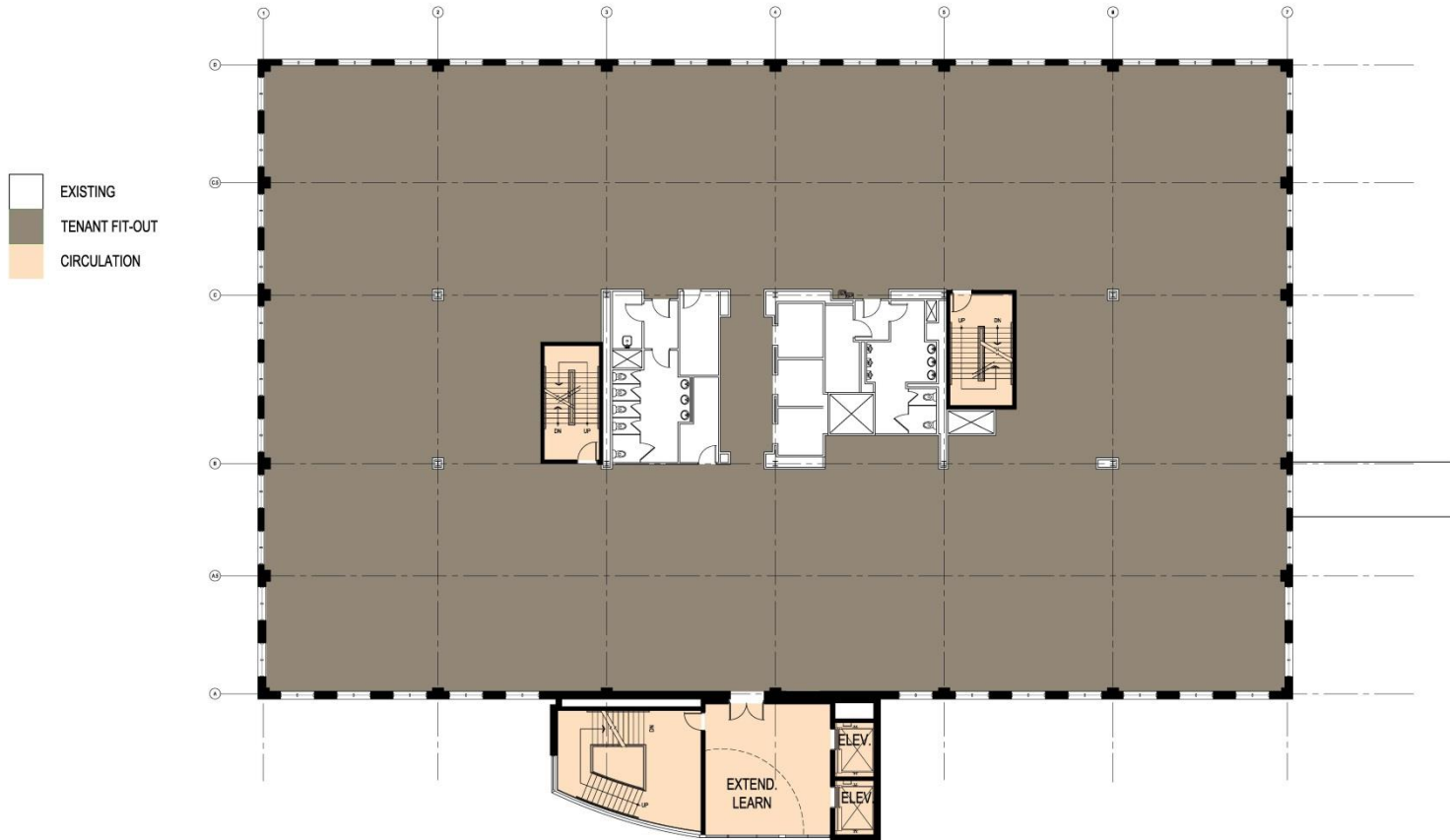
3 FLOOR

4 STORY SCHEME

1701 N. Beaugard Feasibility Study



Floorplan – 5th Floor



NOELKER AND HULL
 Architecture Master Planning Interior Design

6 N. East Street, Suite 300 Frederick MD 21701
 p 301.662.8611 f 301.662.8611 www.noelkerhull.com

5
 FLOOR

4 STORY SCHEME

1701 N. Beauregard Feasibility Study



Gym Addition – Phase II



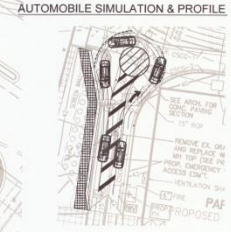
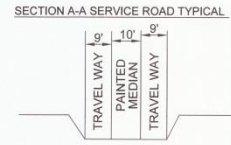
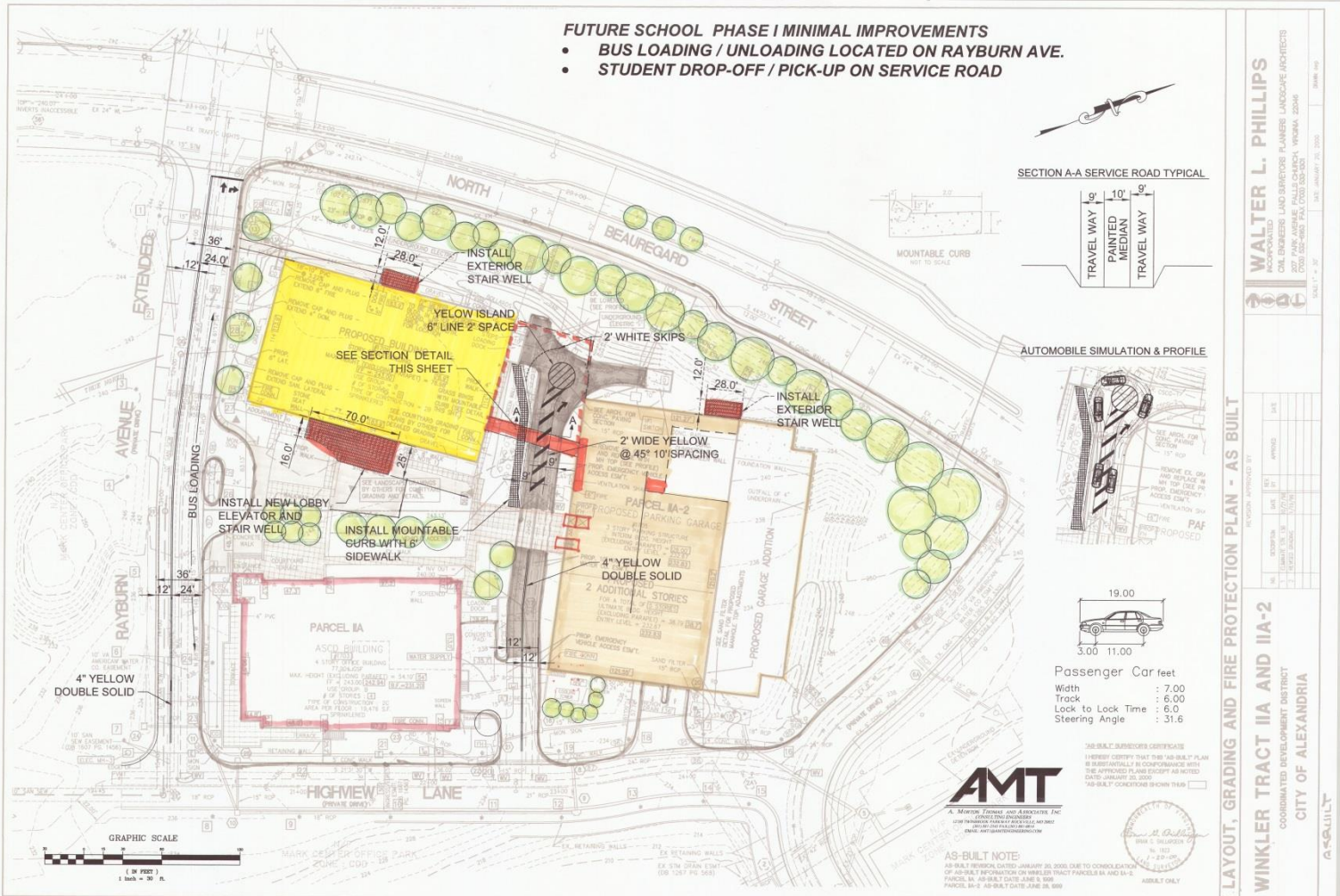
3 (ALT.)

4 STORY SCHEME
1701 N. Beauregard Feasibility Study



Concept Civil Plan - Phase I

- FUTURE SCHOOL PHASE I MINIMAL IMPROVEMENTS**
- BUS LOADING / UNLOADING LOCATED ON RAYBURN AVE.
 - STUDENT DROP-OFF / PICK-UP ON SERVICE ROAD



Passenger Car feet

Width	: 7.00
Track	: 6.00
Lock to Lock Time	: 6.0
Steering Angle	: 31.6



AS-BUILT NOTE:
 AS-BUILT RESUBMITTED JANUARY 20, 2000 DUE TO CORRECTIONS OF AS-BUILT INFORMATION ON WINKLER TRACT PARCELS IIA AND IIA-2. PARCEL IIA - AS-BUILT DATE: JUNE 25, 1999. PARCEL IIA-2 - AS-BUILT DATE: JUNE 25, 1999.

WALTER L. PHILLIPS
 INCORPORATED
 CIVIL ENGINEER, LANDSCAPE ARCHITECT, PLANNER, LANDSCAPE ARCHITECTS
 1000 N. GARDEN ST., SUITE 100, ALEXANDRIA, VIRGINIA 22304
 (703) 442-0077 FAX: (703) 442-0030
 SCALE: 1" = 30'

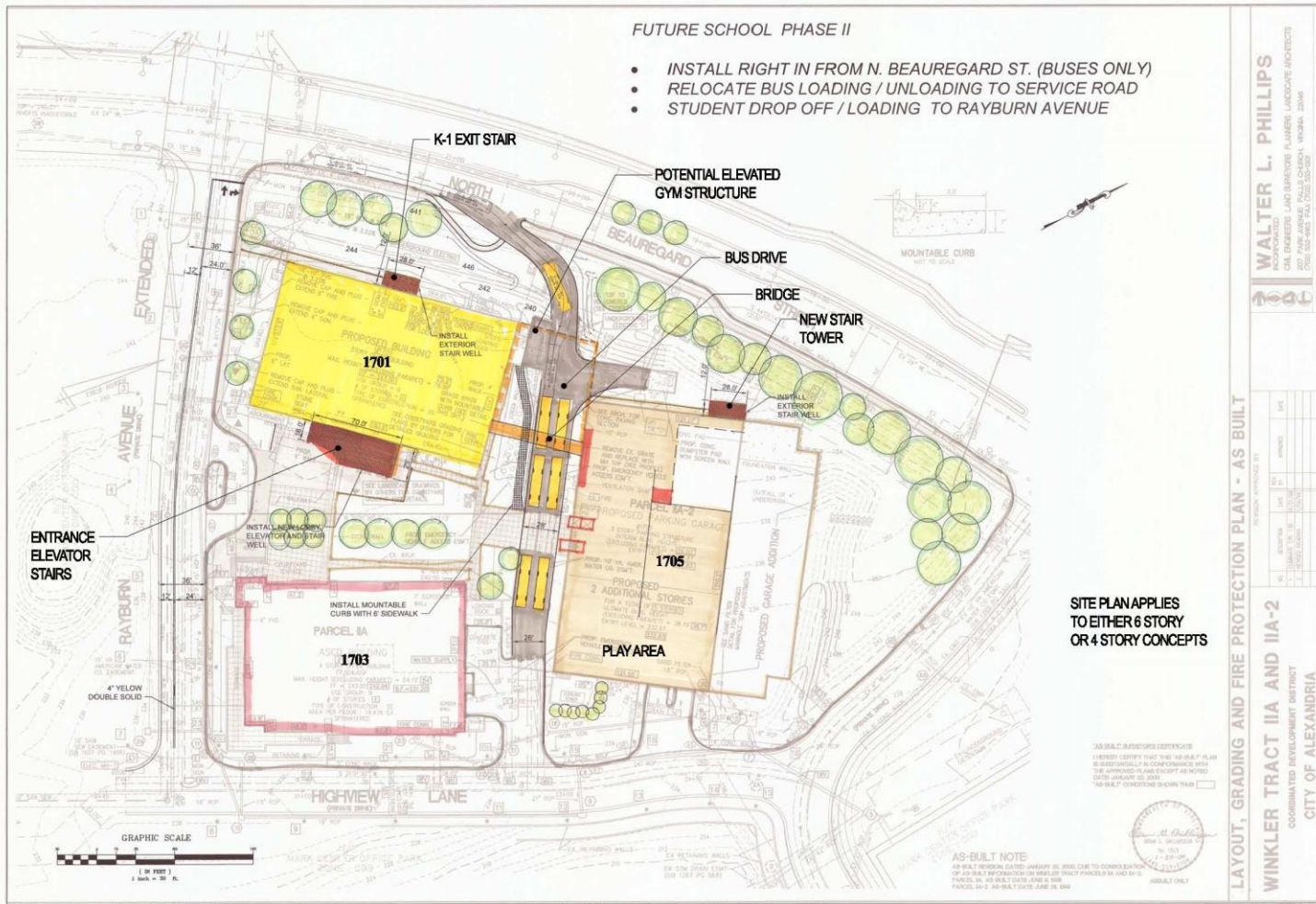
LAYOUT, GRADING AND FIRE PROTECTION PLAN - AS BUILT

WINKLER TRACT IIA AND IIA-2
 COORDINATED DEVELOPMENT DISTRICT
 CITY OF ALEXANDRIA

DATE: JANUARY 20, 2000

96-0283 SHEET 3 OF 4

Concept Civil Plan - Phase II



Next Steps

- Amendment to Existing DSUP
- Covenants
- Funding
- Further Design Requirements

QUESTIONS?

CONTACT PERSON: Richard Jackson, Director of Educational Facilities, (703) 619-8038