

The High School Project



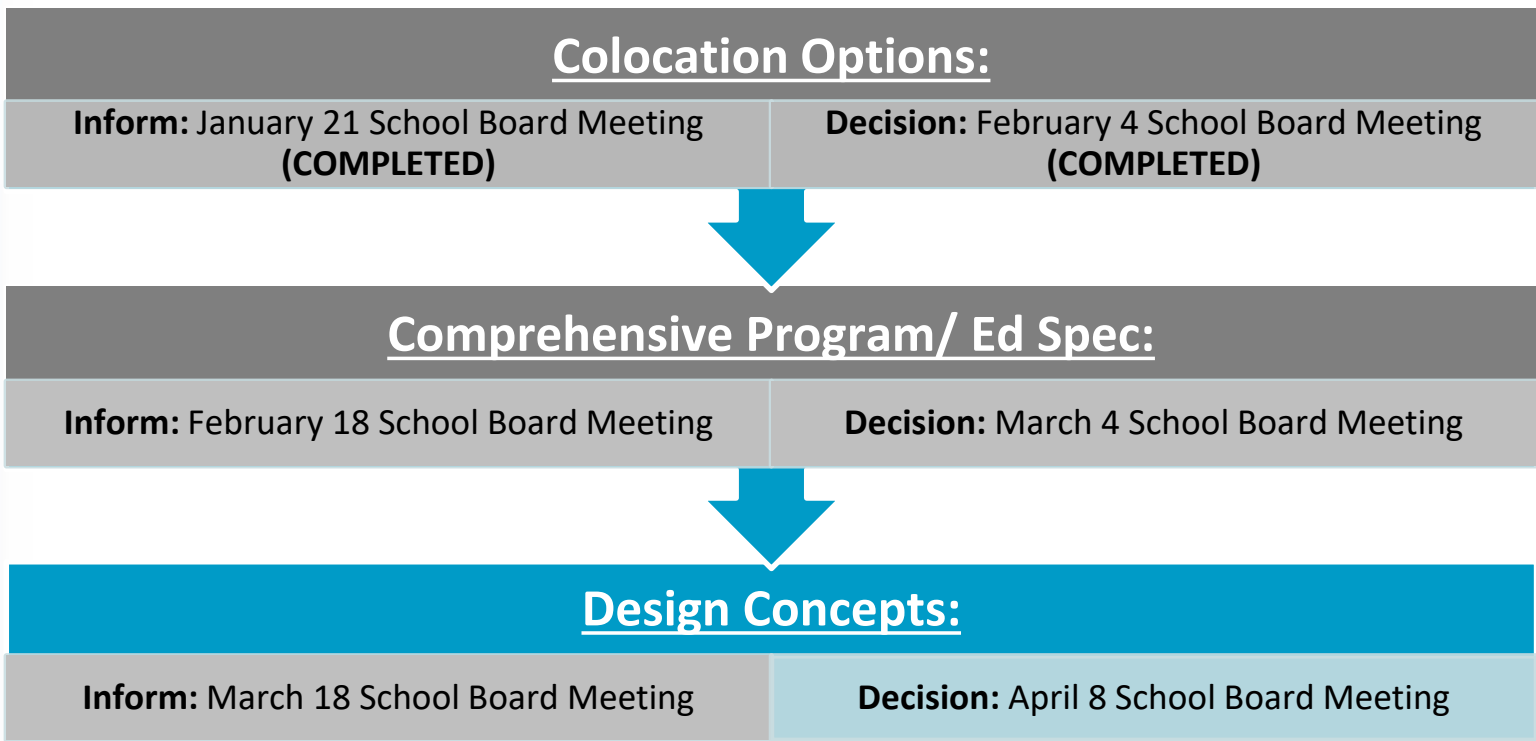
School Board Meeting

April 8, 2021

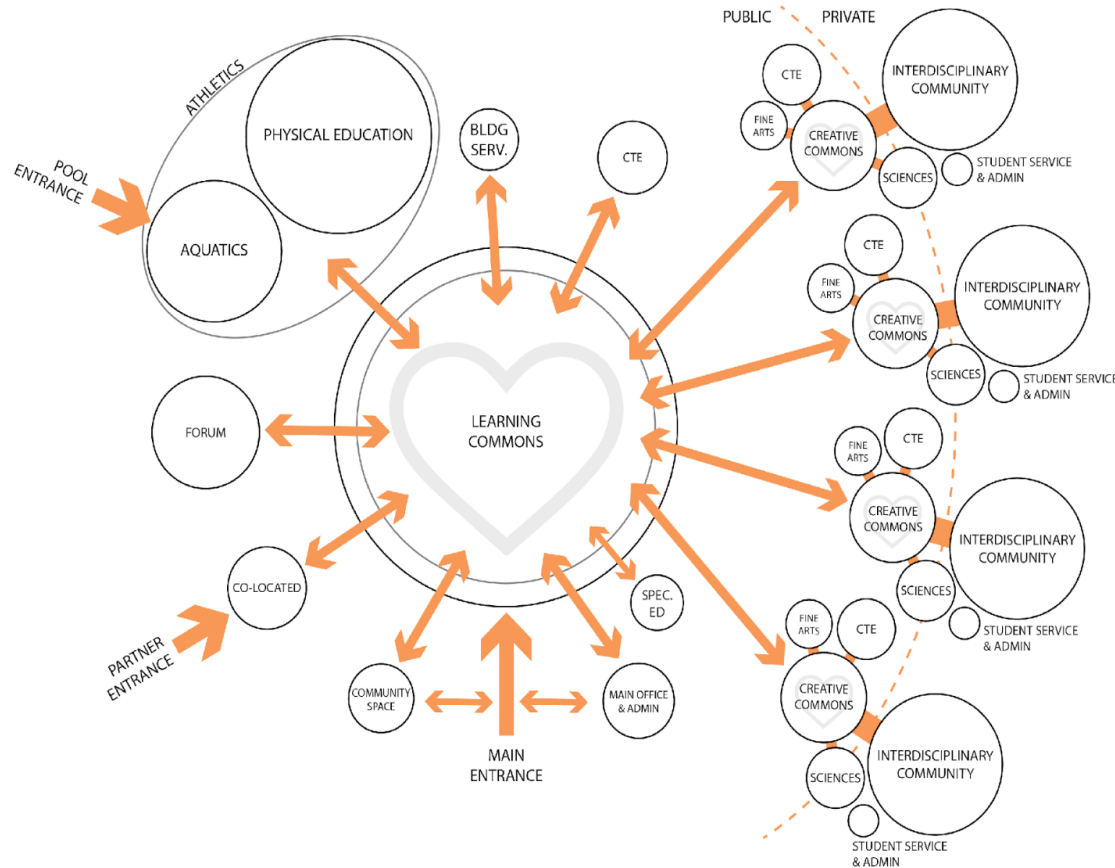
Essential Questions

1. How have the concepts evolved based on feedback?
2. Which site options and concepts are being considered by the School Board?
3. Which optional programs are still being considered?
4. What are the next steps?

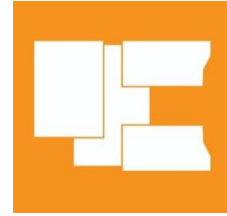
Near Term Decisions



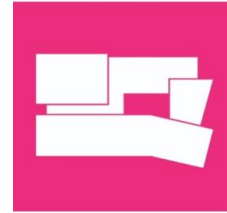
Bringing Minnie Howard Campus to Life



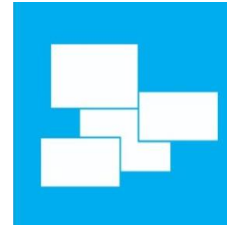
The Hand Concept



The Crescent Concept



The Pinwheel Concept



Initial Three Concepts

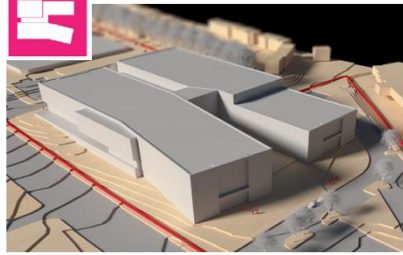
The three concepts were **evaluated** against the design patterns and criteria in meetings and workshops with ACPS and community stakeholders.



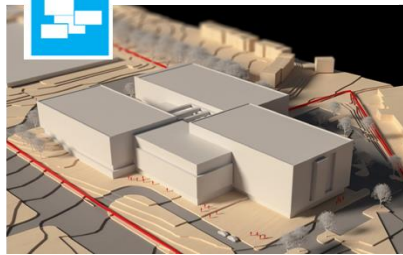
THE HAND CONCEPT



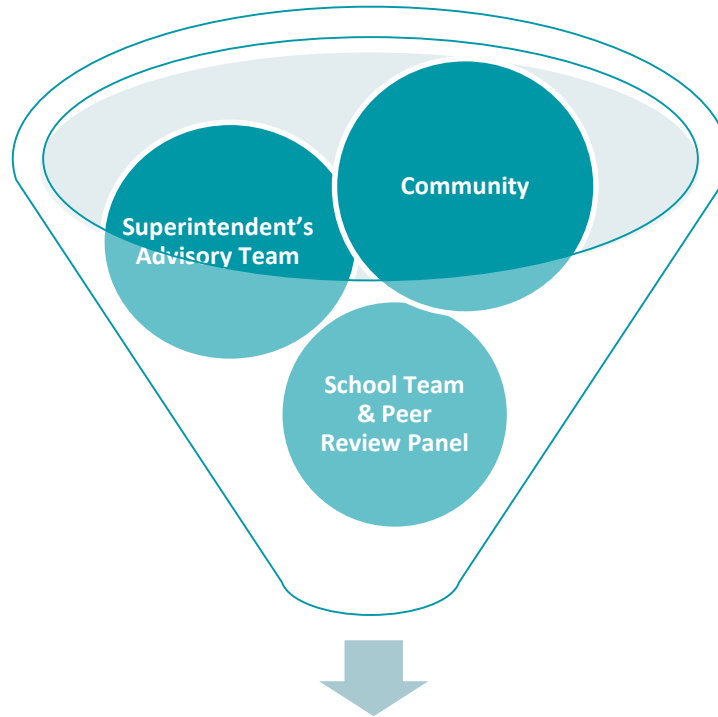
THE CRESCENT CONCEPT



THE PINWHEEL CONCEPT



Design Feedback Process



Minnie Howard Design Concepts

Concept Phase Engagement

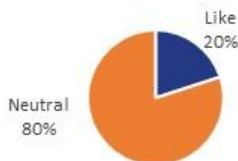
Date	Activity
Mar 8	Superintendent's Advisory Team Kickoff
Mar 8	Design Kickoff Community Webinar
Mar 16	Community Meeting - 6:00 to 7:00 p.m.
Mar 16	Superintendent's Advisory Team Meeting - 7:00 to 8:00 p.m.
<i>Mar 18</i>	<i>School Board Meeting: Presentation of Concepts</i>
Mar 24	EDT and T.C.Williams Staff Meeting
Mar 25	Community Meeting – 6:00 to 7:00 p.m.
Mar 25	Superintendent's Advisory Team Meeting - 7:00 to 8:00 p.m.

* Tentative dates will need to be confirmed

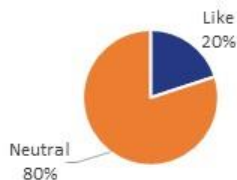
Feedback on Initial Concepts – March 16 Community Meeting (38 attendees)

HAND CONCEPT

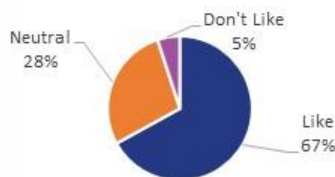
How do you feel about the massing aspect in the Hand Concept?



How do you feel about the vehicular and pedestrian access in the Hand Concept?

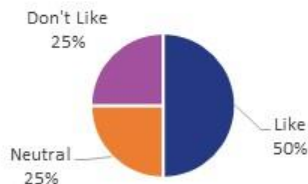


How do you feel about the open space aspect in the Hand Concept?

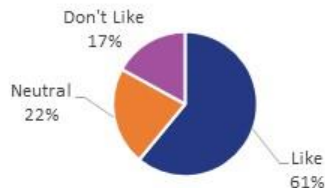


CRESCENT CONCEPT

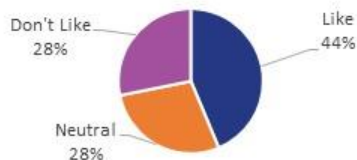
How do you feel about the massing aspect in the Crescent Concept?



How do you feel about the vehicular and pedestrian access in the Crescent Concept?

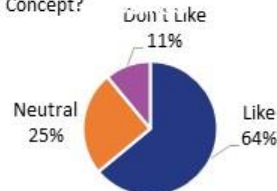


How do you feel about the open space aspect in the Crescent Concept?

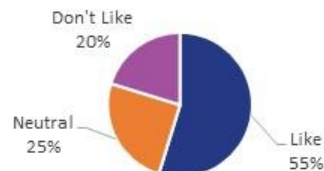


PINWHEEL CONCEPT

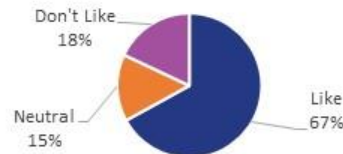
How do you feel about the massing aspect in the Pinwheel Concept?



How do you feel about the vehicular and pedestrian access in the Pinwheel Concept?

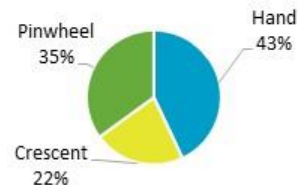


How do you feel about the open space aspect in the Pinwheel Concept?

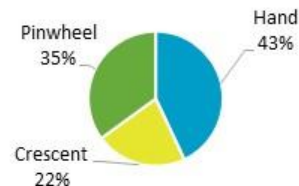


CONCEPT COMPARISON

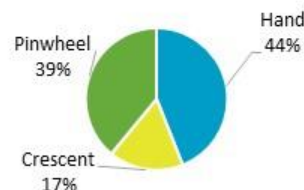
Which concept do you think is best for massing?



Which concept do you think is best for vehicular and pedestrian access?



Which concept do you think is best for open space?



Comparison of Concepts

LEGEND				
ACHIEVES GOAL				
DESIGN PATTERNS	Concept	The Hand Concept	The Crescent Concept	The Pinwheel Concept
	Connected High School Network	●	●	●
	Equity and Access	●	●	●
	Heart of School/ Library- Learning Commons	●	●	●
	Community Use and Access	●	●	●
	STEAM Adjacencies	●	●	●
	Integrating the Arts	●	●	●
	Flexibility and Adaptability	●	●	●
	Interdisciplinary Communities	●	●	●
	Extended Learning Areas and Breakout Rooms	●	●	●
	Distributed Science Labs	●	●	●
	Distributed Dining Venues	●	●	●
	Centralized and Distributed Admin and Support	●	●	●
	Shared Teacher Office and Collaboration Areas	●	●	●
	Indoor/ Outdoor Connections	●	●	●
CRITERIA	Program Accommodation	●	●	●
	Outdoor Athletic Program	●	●	●
	Future Expansion/Flexibility	●	●	●
	Sustainability (Rooftop PV Production)	●	●	●
	Walk/Bike/Bus/Drive	●	●	●
	Parking	●	●	●
	Constructability	●	●	●

Revised Site Layout Options

OPTION A



OPTION B

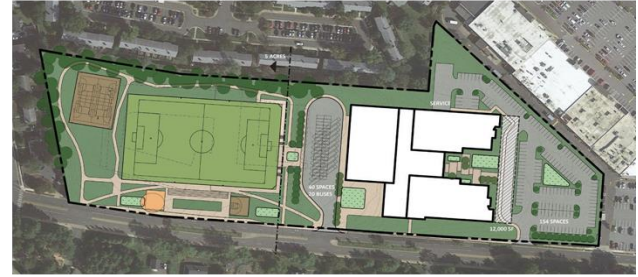


Revised Concepts Comparison Matrix

The three concepts were **evaluated** against the design patterns and criteria in meetings and workshops with ACPs and community stakeholders.



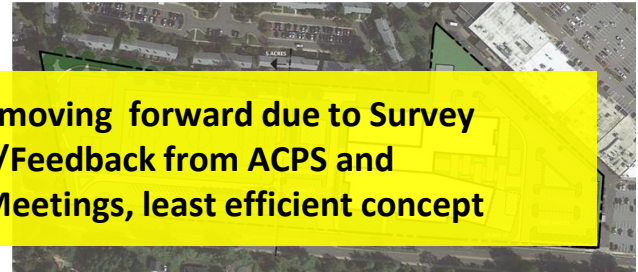
THE HAND CONCEPT



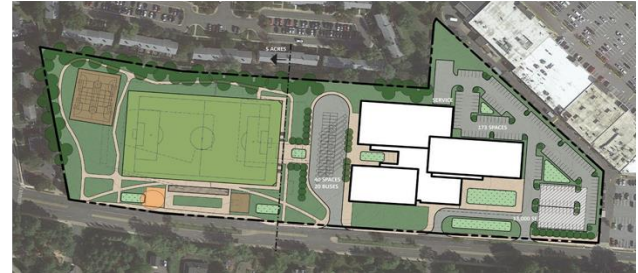
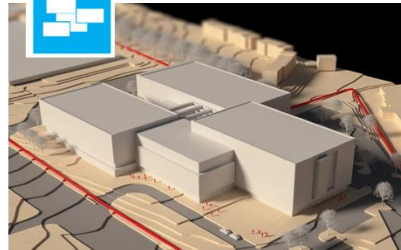
THE CRESCENT CONCEPT



Concept not moving forward due to Survey Results/Feedback from ACPs and Community Meetings, least efficient concept



THE PINWHEEL CONCEPT



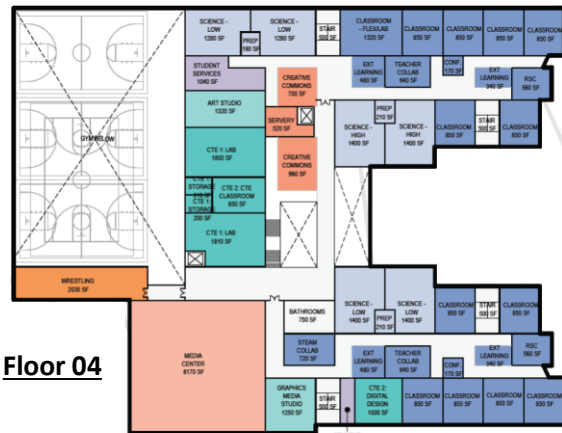
The Hand Concept



The Hand Concept

- Learning neighborhoods are oriented with **classrooms facing north and south.**
- The heart of the school is the **connective link between all the parts.**
- Physical Education spaces are organized to provide **convenient access to outdoor fields.**
- **Three-sided courtyard** open along its eastern edge **providing outdoor connection to drop off loop.**
- **Combines indoor & outdoor spaces.**
- **On grade parking**

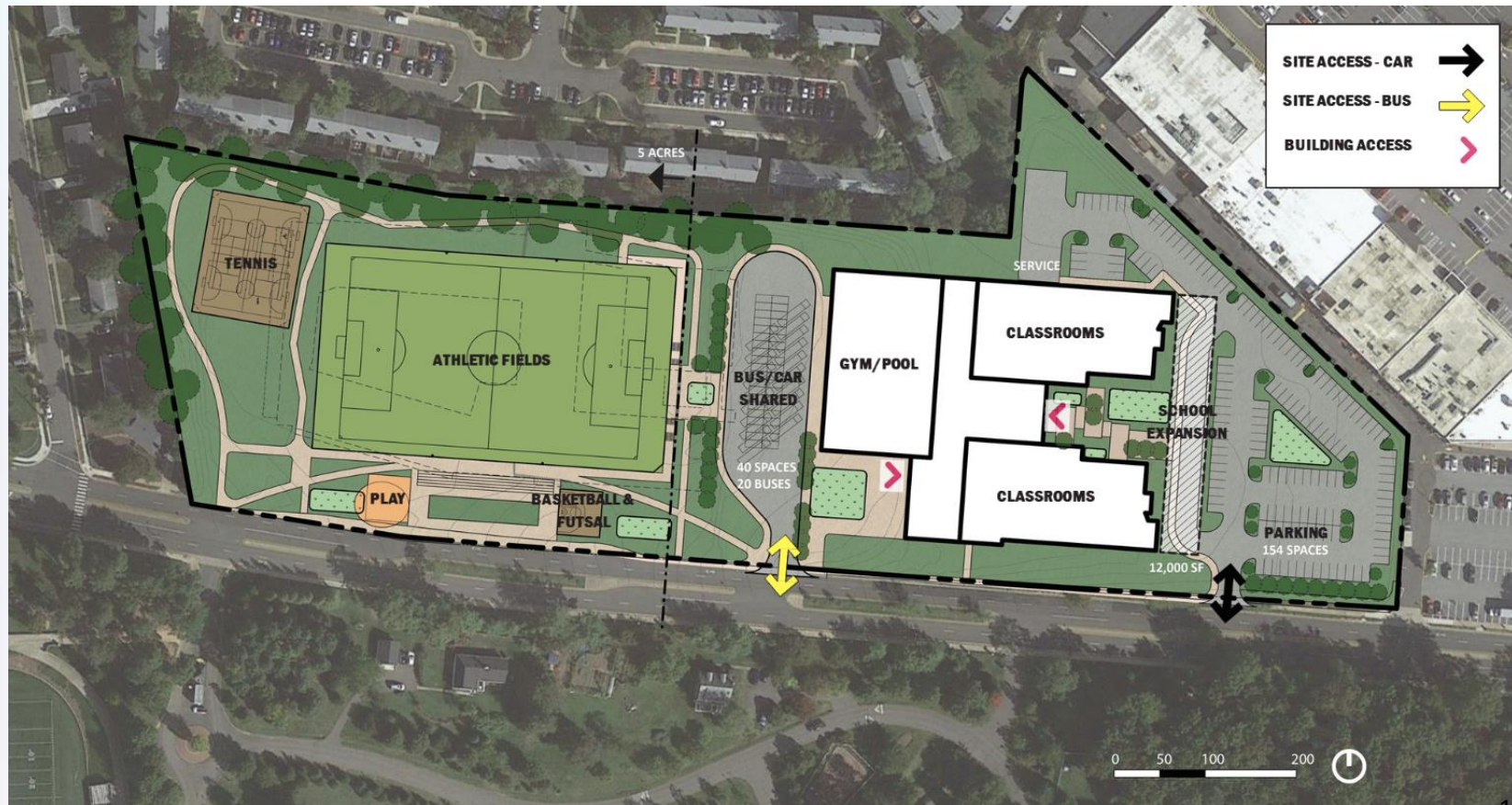




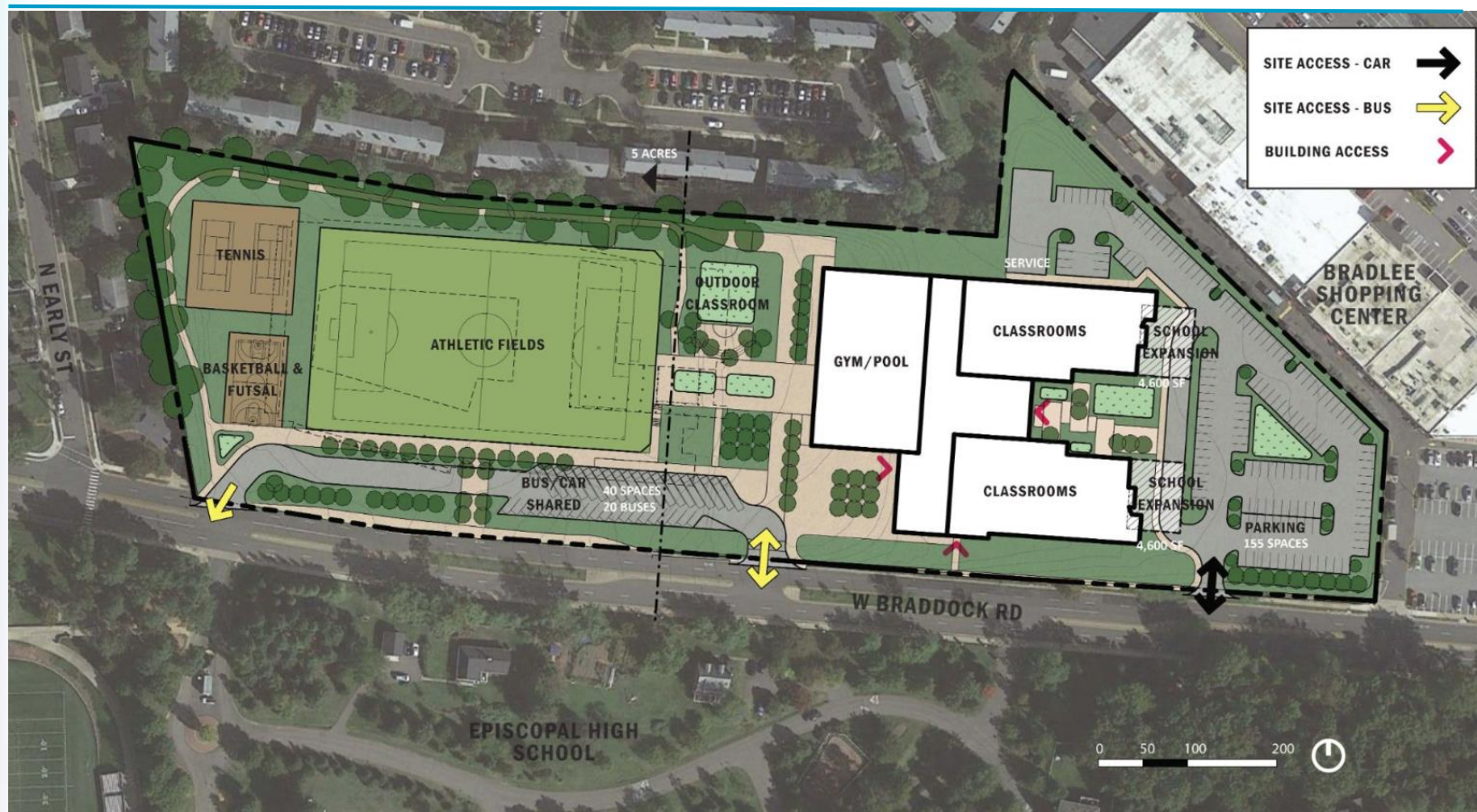
The Hand Concept: Massing Experience



The Hand Concept – Option A



The Hand Concept – Option B



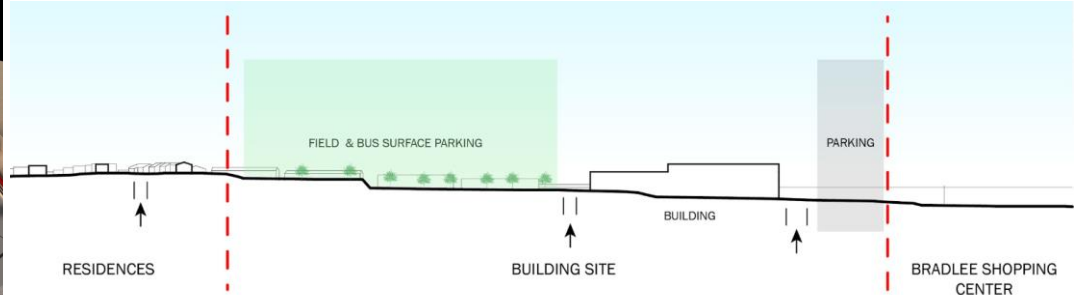
Massing Precedents & Site Section

Precedents

1. Boldrewood Innovation Campus, UK (Grimshaw)
2. Manhattan High School, KS (Gould Evans)
3. Yorktown High School, VA (Perkins Eastman)
4. Oakland University Human Health Building, MI (Smith Group)
5. Mount Si High School, WA (NAC)
6. Madden Innovation Center, New Zealand (Warren & Mahoney)



AERIAL OVER BRADDOCK RD



The Pinwheel Concept

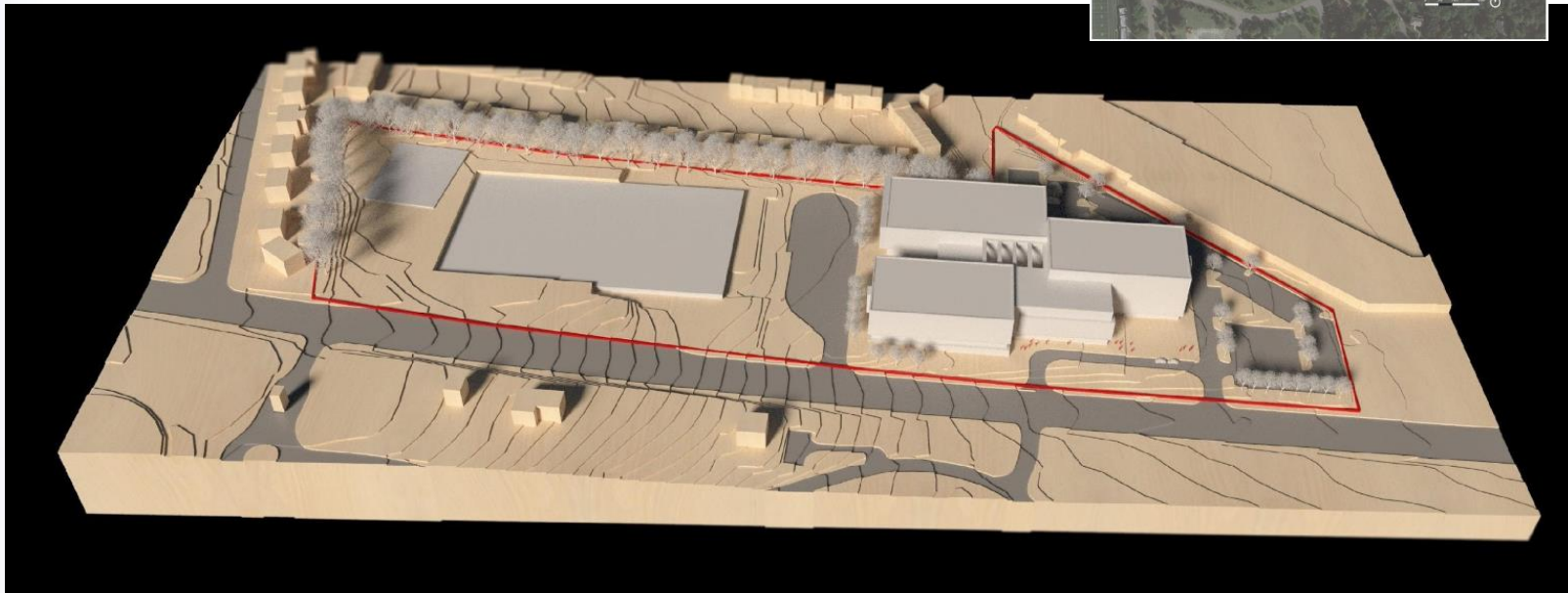


The Pinwheel Concept

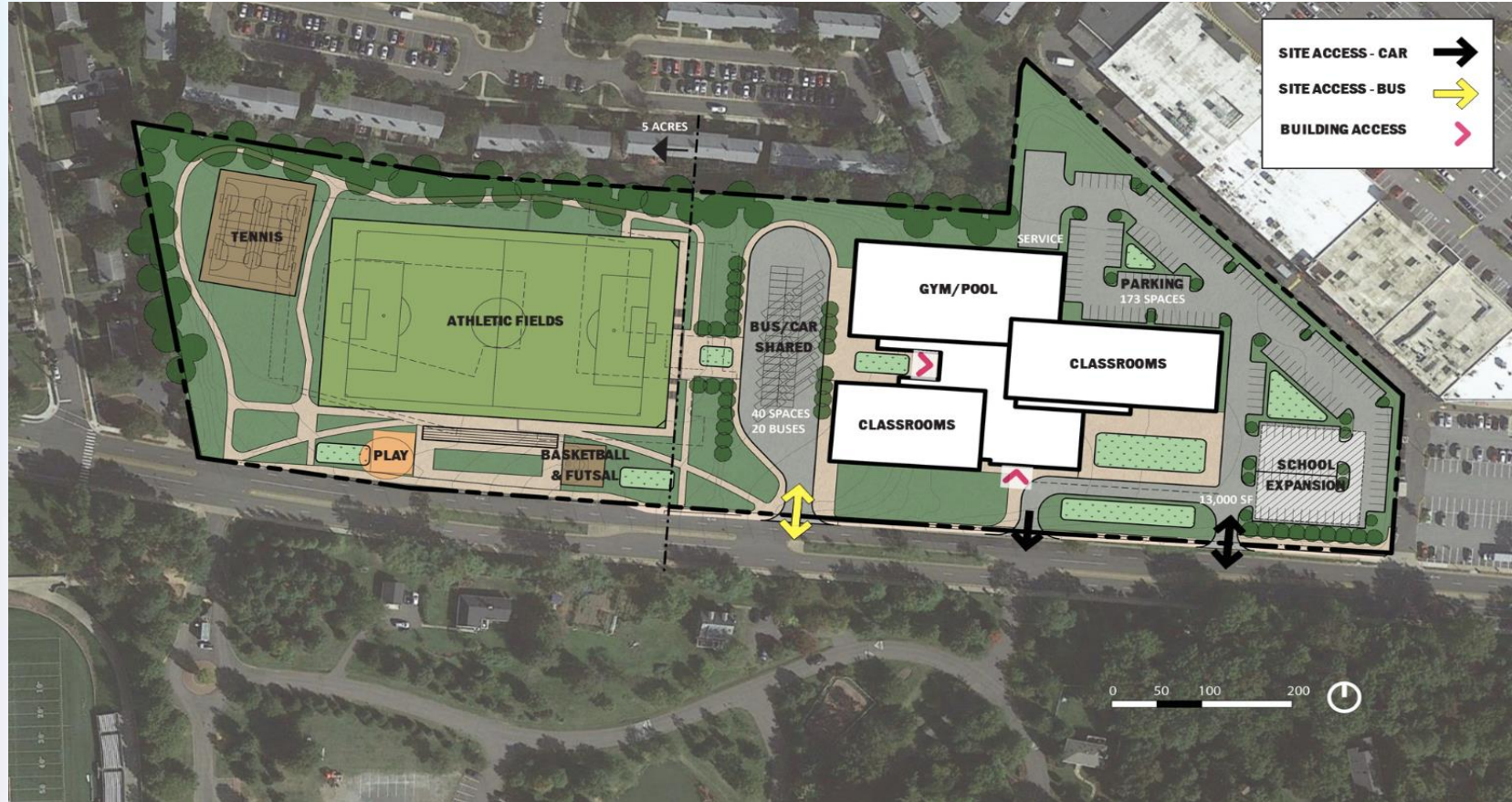
- Organizes the **learning neighborhoods** and **athletic facilities** in **orbit around the heart of the school.**
- The heart of the school is the **connective link between all the parts.**
- Three-sided courtyard along the western side **providing outdoor connection to the fields**
- **Drop off loop & plaza** adjacent to Braddock.
- **Combines indoor & outdoor spaces.**
- **On grade parking**



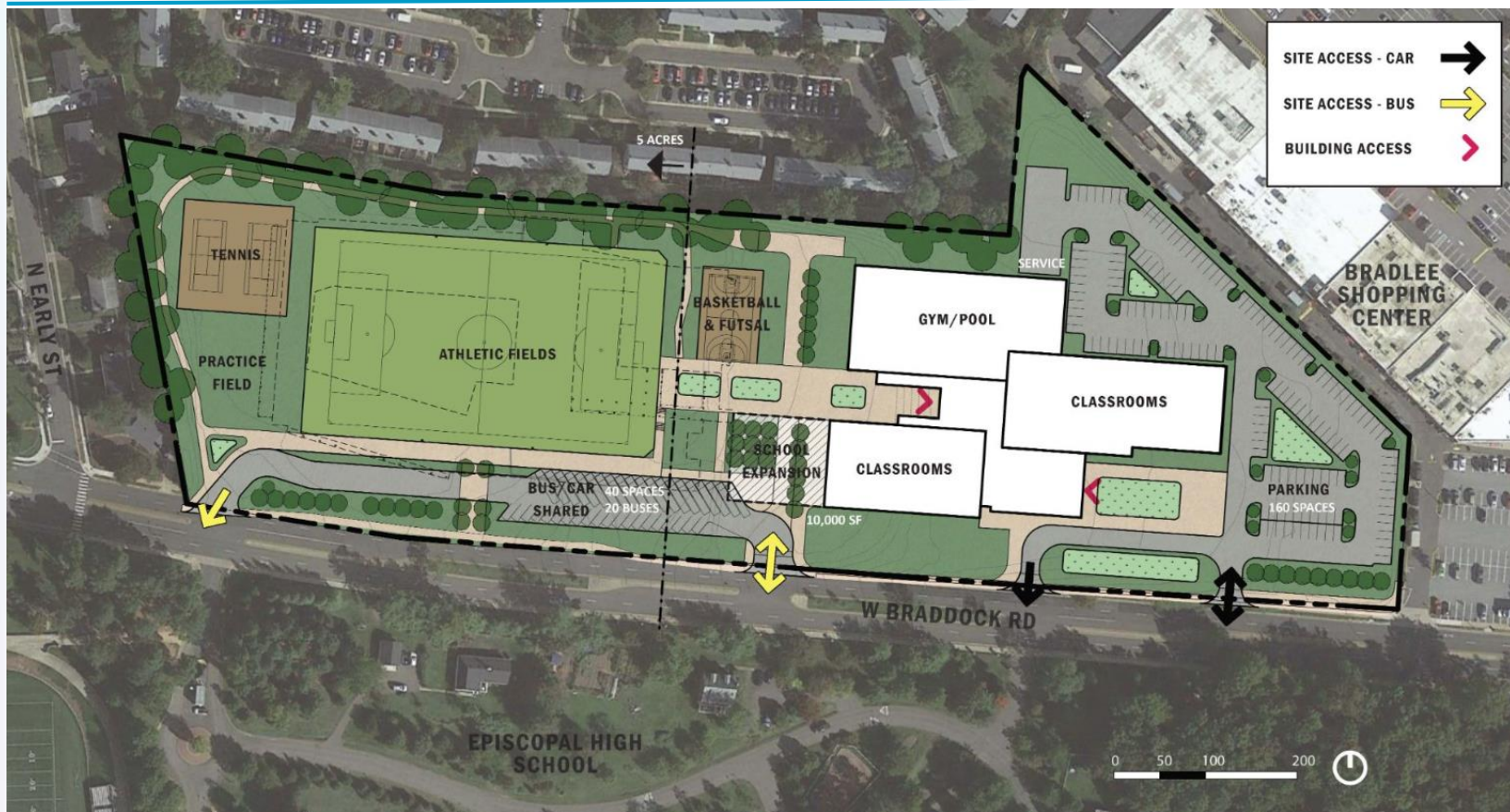
The Pinwheel Concept: Massing Experience



The Pinwheel Concept – Option A



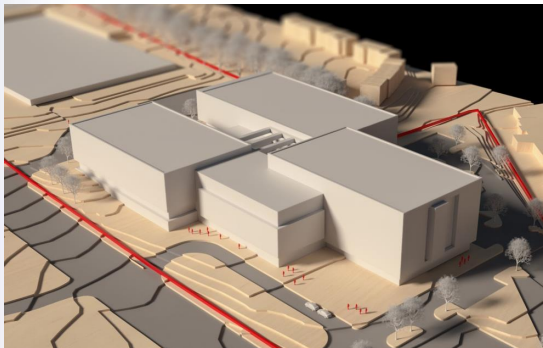
The Pinwheel Concept - Site Plan Option B



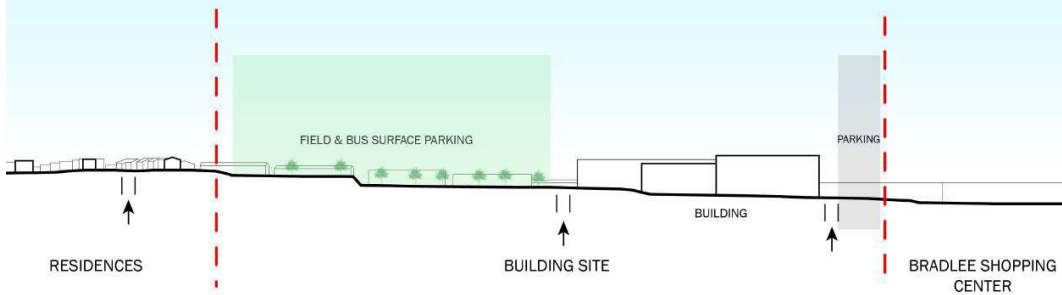
Massing Precedents & Site Section

Precedents

1. Concordia International School, Shanghai (Gensler)
2. Banneker High School, DC (Perkins Eastman)
3. UMass Design Building, MA (Leers Weinzapfel Associates)
4. Manhattan High School, KS (Gould Evans)
5. Traditional Industries Innovation Center, Taiwan (MAYU Architects)
6. Dunbar High School, DC (Perkins Eastman)



AERIAL OVER BRADDOCK RD



Feedback on Revised Concepts – March 24 & 25 Meetings

EDT MEETING

Which site option do you like best?

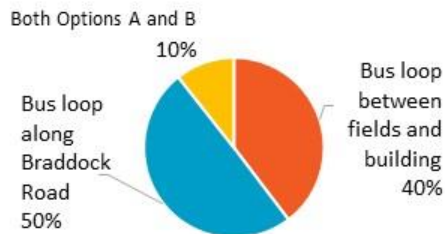


Which building concept do you like best?



COMMUNITY MEETING

Which site option do you like best?



Which building concept do you like best?



ADVISORY GROUP MEETING

Which site option do you like best?



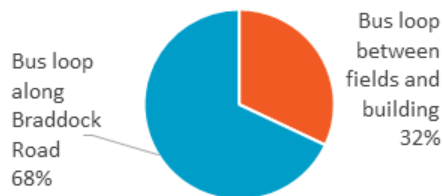
Which building concept do you like best?



Feedback on Revised Concepts – Staff & Student Polls

Staff Poll – 70 Responses

Which site option do you like best?



Which building concept do you like best?



Student Poll – 313 Responses






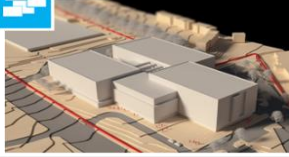
Which site option do you like best?



Which building concept do you like best?



Comparison of Concepts

LEGEND				
ACHIEVES GOAL				
DESIGN PATTERNS	Concept	The Hand Concept	The Crescent Concept	The Pinwheel Concept
	Connected High School Network	●	●	●
	Equity and Access	●	●	●
	Heart of School/ Library- Learning Commons	●	●	●
	Community Use and Access	●	●	●
	STEAM Adjacencies	●	●	●
	Integrating the Arts	●	●	●
	Flexibility and Adaptability	●	●	●
	Interdisciplinary Communities	●	●	●
	Extended Learning Areas and Breakout Rooms	●	●	●
	Distributed Science Labs	●	●	●
	Distributed Dining Venues	●	●	●
	Centralized and Distributed Admin and Support	●	●	●
	Shared Teacher Office and Collaboration Areas	●	●	●
	Indoor/ Outdoor Connections	●	●	●
CRITERIA	Program Accommodation	●	●	●
	Outdoor Athletic Program	●	●	●
	Future Expansion/Flexibility	●	●	●
	Sustainability (Rooftop PV Production)	●	●	●
	Walk/Bike/Bus/Drive	●	●	●
	Parking	●	●	●
	Constructability	●	●	●

Best Features - Building Concepts

HAND	PINWHEEL
<ul style="list-style-type: none"> ● The least expensive option ● 4-story high ● Presents courtyard between 2 classroom wings ● Offers some flexibility for future expansion ● Main entrance and prominent civic presence on East and West sides 	<ul style="list-style-type: none"> ● Offers most open space ● Most parking ● Best relationship of learning spaces with heart of the school ● Most compact school building with the least footprint ● Offers the most flexibility for future expansion ● Main entrance and prominent civic presence from Braddock Road

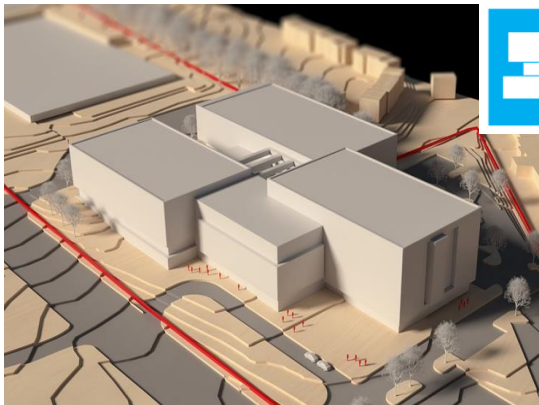
Revised Building Concept Options



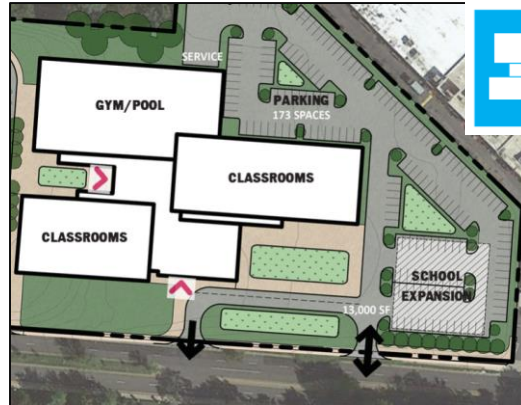
THE HAND CONCEPT



THE HAND CONCEPT



THE PINWHEEL CONCEPT



THE PINWHEEL CONCEPT

Comparison Matrix

COMPARISON CATEGORY	HAND	PINWHEEL
Building GSF	293,300	297,300
Open Space GSF	343,900	346,300
Total Parking Spaces	195	200
Dedicated Spaces	155	160
Shared Spaces	40	40

**These are approximate costs based on preliminary concept designs*

Cost Comparison Matrix

School Board Costs (Construction Budget \$150M):

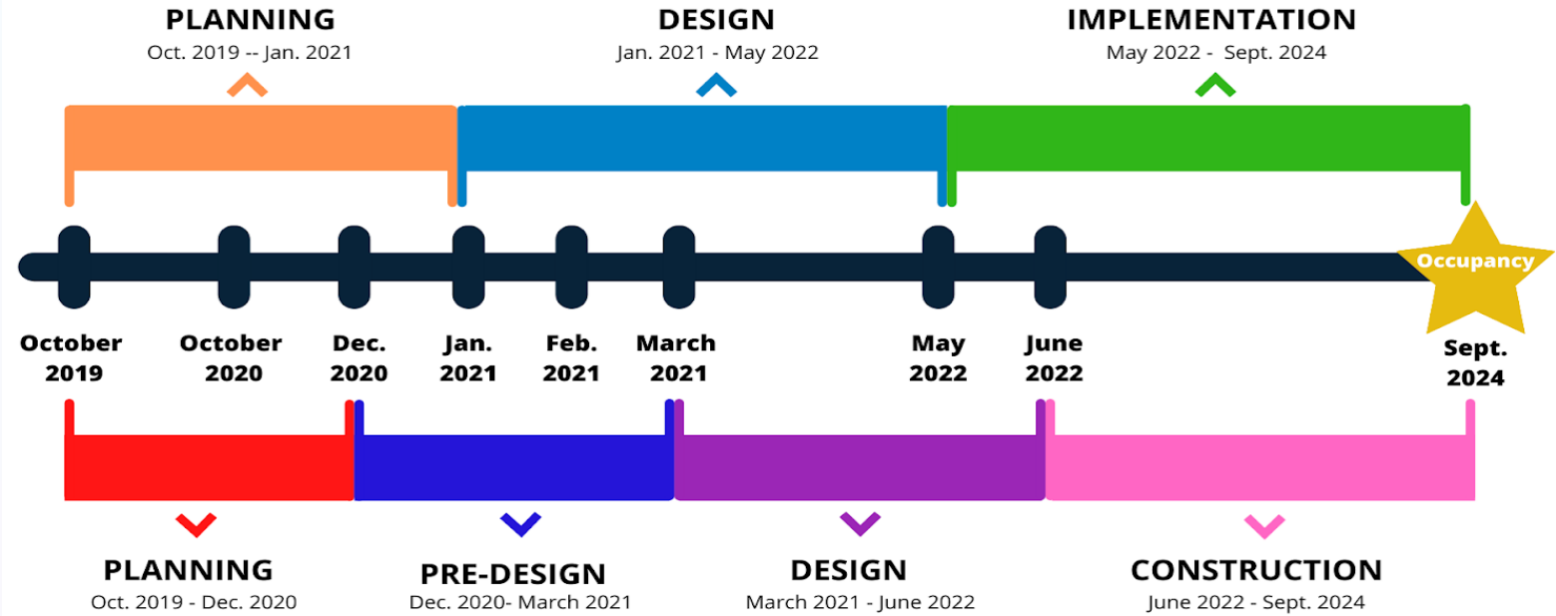
ACPS PROGRAM	HAND	PINWHEEL
Total Construction Hard and Soft	\$147.5M	\$149.5M

OPTIONAL PROGRAM	COST ESTIMATE
Aquatic Facility	\$15.2M
Co-located Alexandria Health Department (Teen Wellness Center)	\$0.9M
Co-located Department of Community and Human Services (DCHS) Spaces	\$0.95M

NOTE: These are approximate costs based on preliminary concept designs

Project Timeline

Educational Design Timeline



Construction Timeline

Questions & Feedback

Contact us:

- **Email:** hsproject@acps.k12.va.us

Updates:

- **Online:** www.acps.k12.va.us/hsproject



Thank you



Superintendent

Dr. Gregory C. Hutchings, Jr.

School Board

Meagan L. Alderton, Chair
Veronica Nolan, Vice Chair

Cindy Anderson
Ramee A. Gentry
Jacinta Greene
Margaret Lorber

Michelle Rief
Christopher A. Suarez
Heather Thornton