

Notes

- 1. Insufficient area for required growth.
- 2. Existing rec center limits siting of new construction or renovation.
- 3. Limited exterior play space
- 4. Encroachment into POS
- 5. No direct access from drop off to school

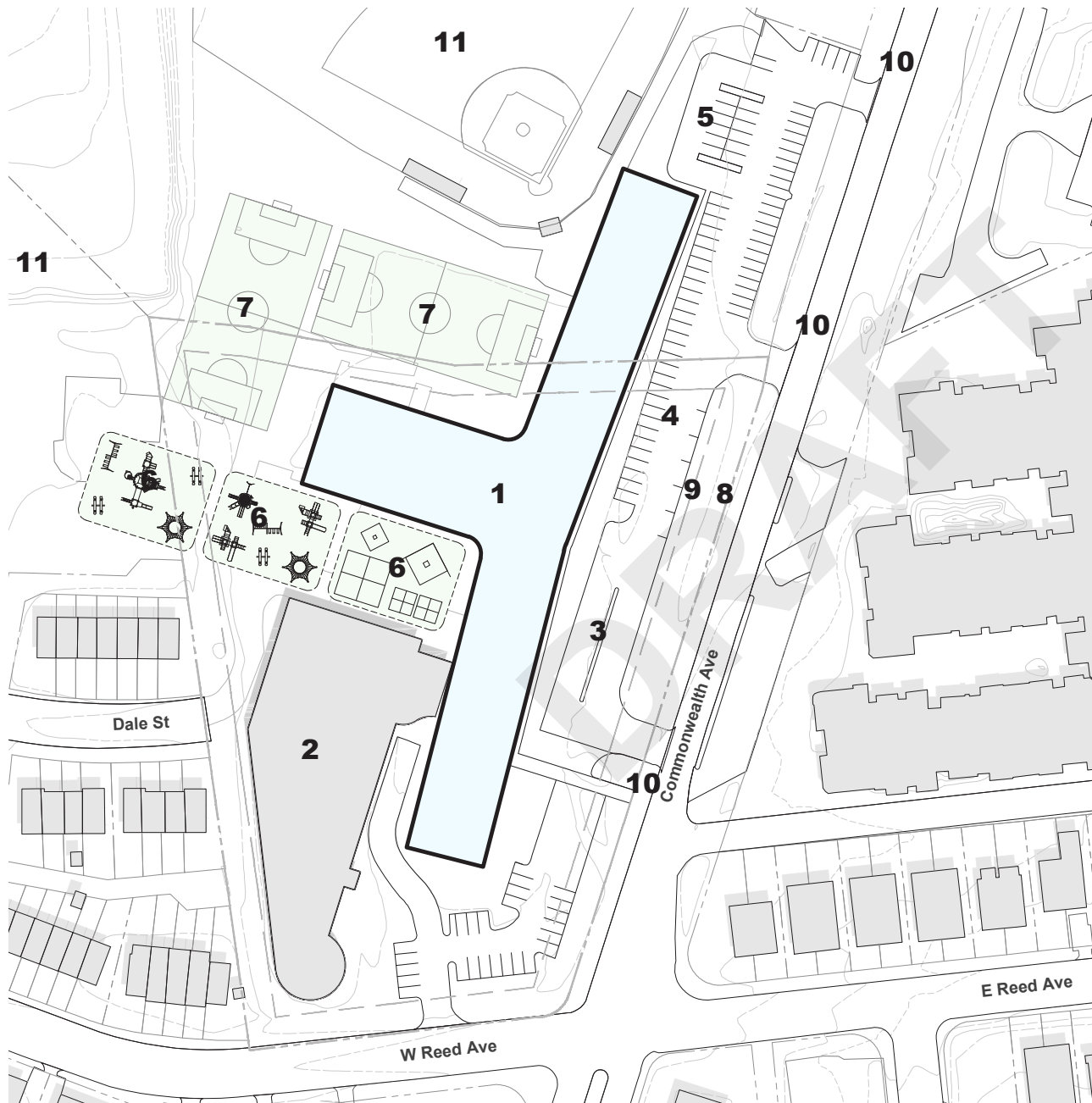




Notes

- 1. Demolition of existing school
- 2. Sitework: Increase Drop Off Area and Garage Area
- 3. New Playing Fields
- 4. Rec Center to Remain





Notes

- 1. New school construction ~101,000 SF
- 2. Existing Rec Center
- 3. Bus / Service Drop Off / Pickup
- 4. Parking 75 Spaces
- 5. Car Drop Off
- 6. Playgrounds Shared with POS
- 7. Fields Shared with POS
- 8. Property Line
- 9. Setback
- 10. Maintain existing curb cuts
- 11. Public Open Space (POS)



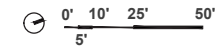
Notes

1. Total Gross Area: **101,815 SF**
2. First Floor Gross Area: **53,127 SF**



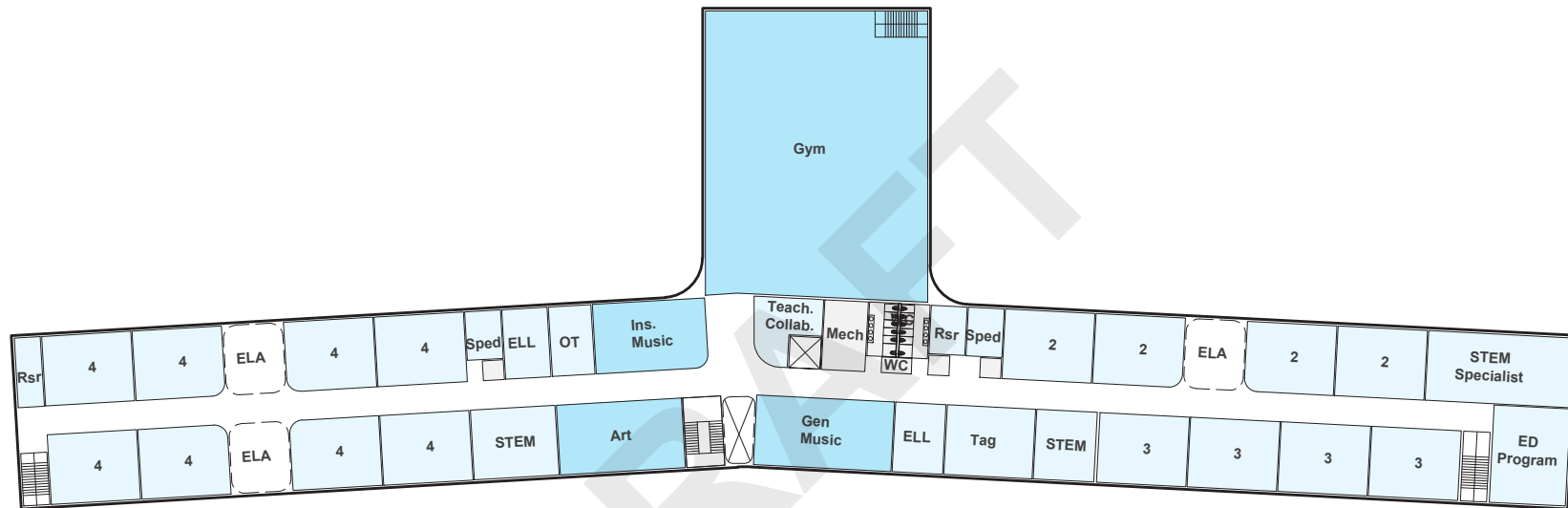
1st Floor

- Core Academic/special Ed
- Visual
- Art/music/science
- Media Center/library
- Physical Education
- Student Dining And Food Services
- Administration
- Maintenance And Custodial Services
- Building Services And Restrooms



Notes

1. Total Gross Area: **101,000 SF**
2. Second Floor Gross Area: **48,688 SF**



2nd Floor

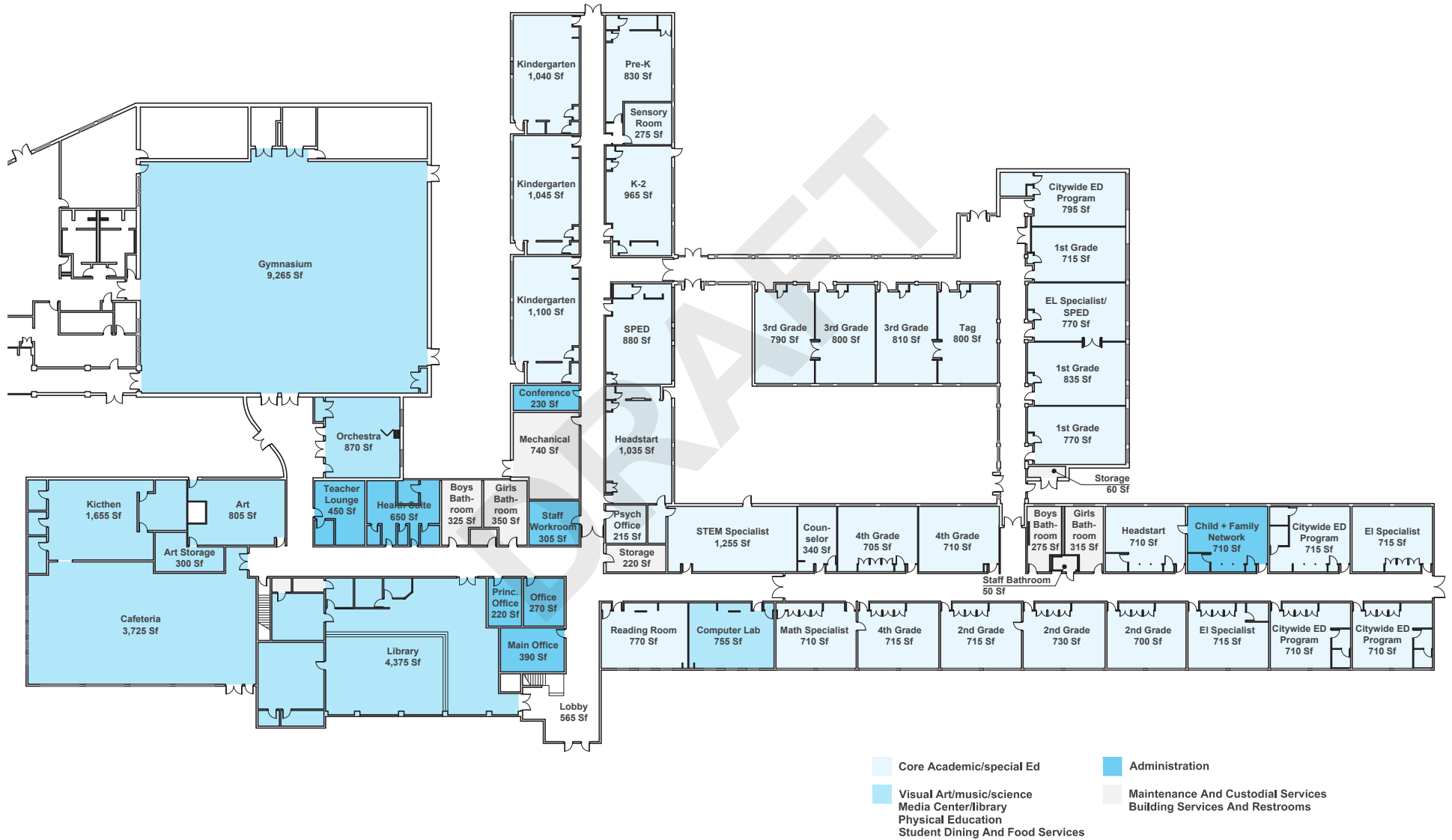
Legend:

- Core Academic/special Ed
- Visual
- Art/music/science
- Media Center/library
- Physical Education
- Student Dining And Food Services
- Administration
- Maintenance And Custodial Services
- Building Services And Restrooms

Scale: 0' 10' 25' 50'
 5'

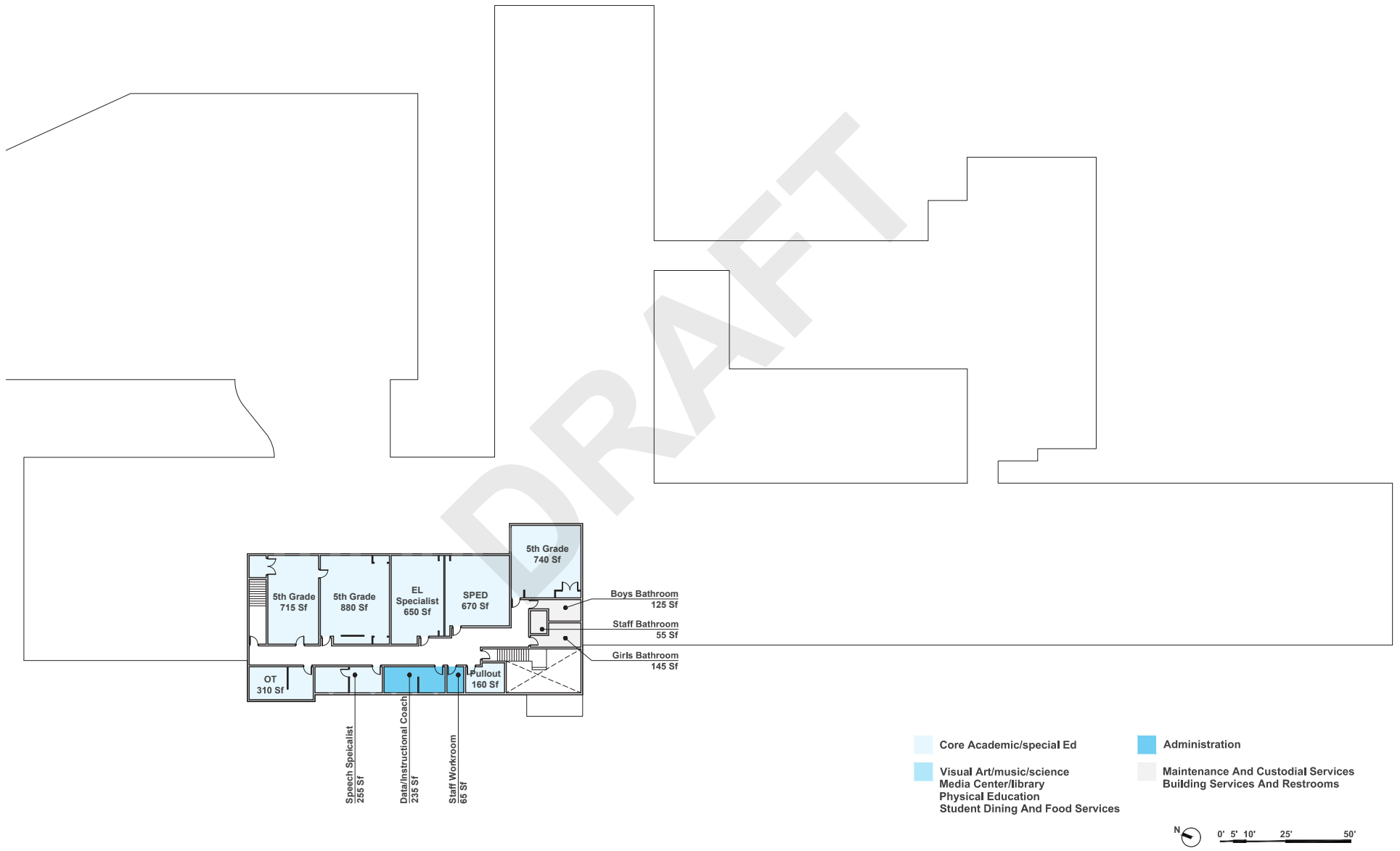
Educational Specifications Capacity and Program

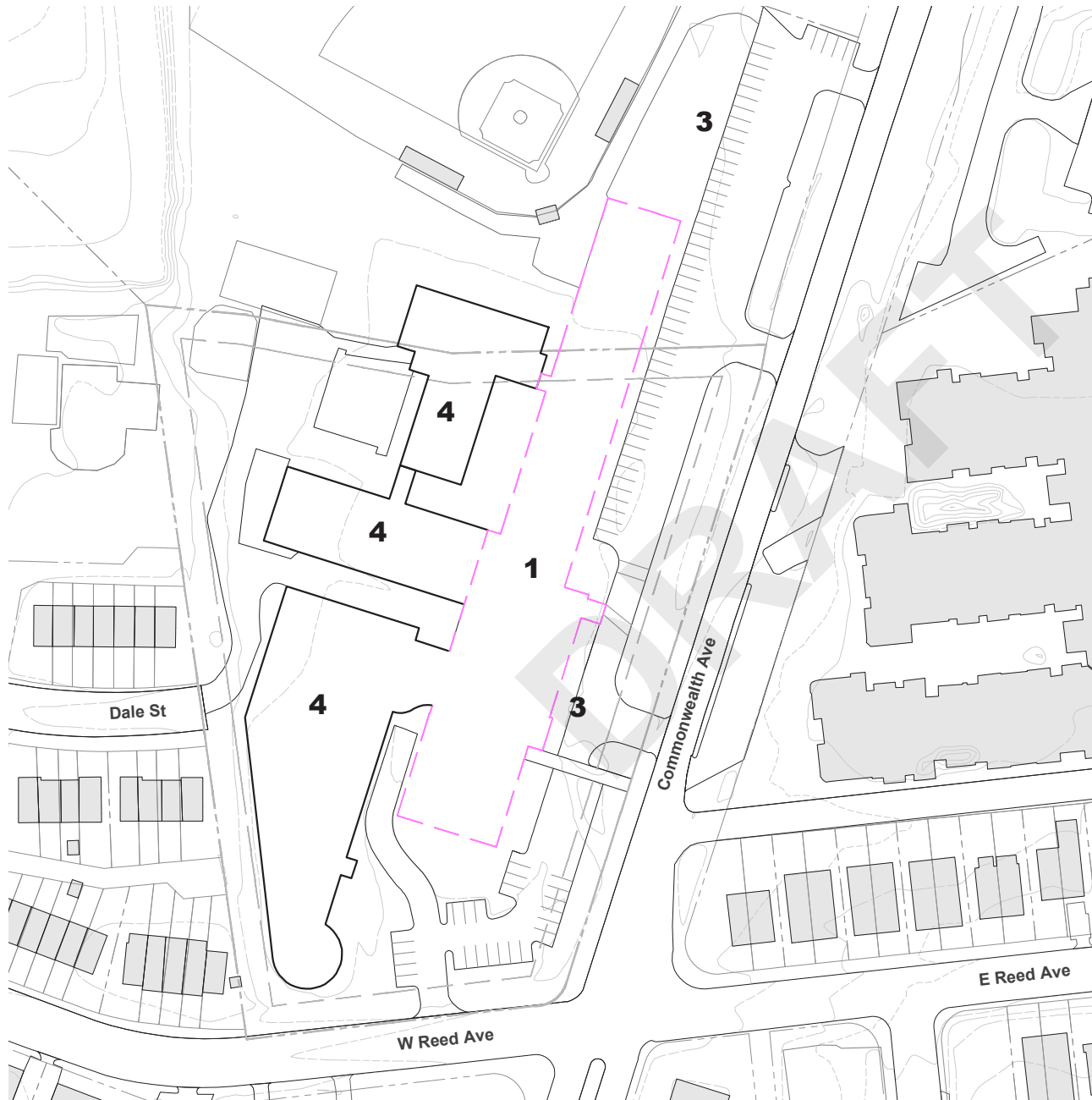
Cora Kelly Existing 1st Floor plan



Educational Specifications Capacity and Program

Cora Kelly Existing 2nd Floor plan



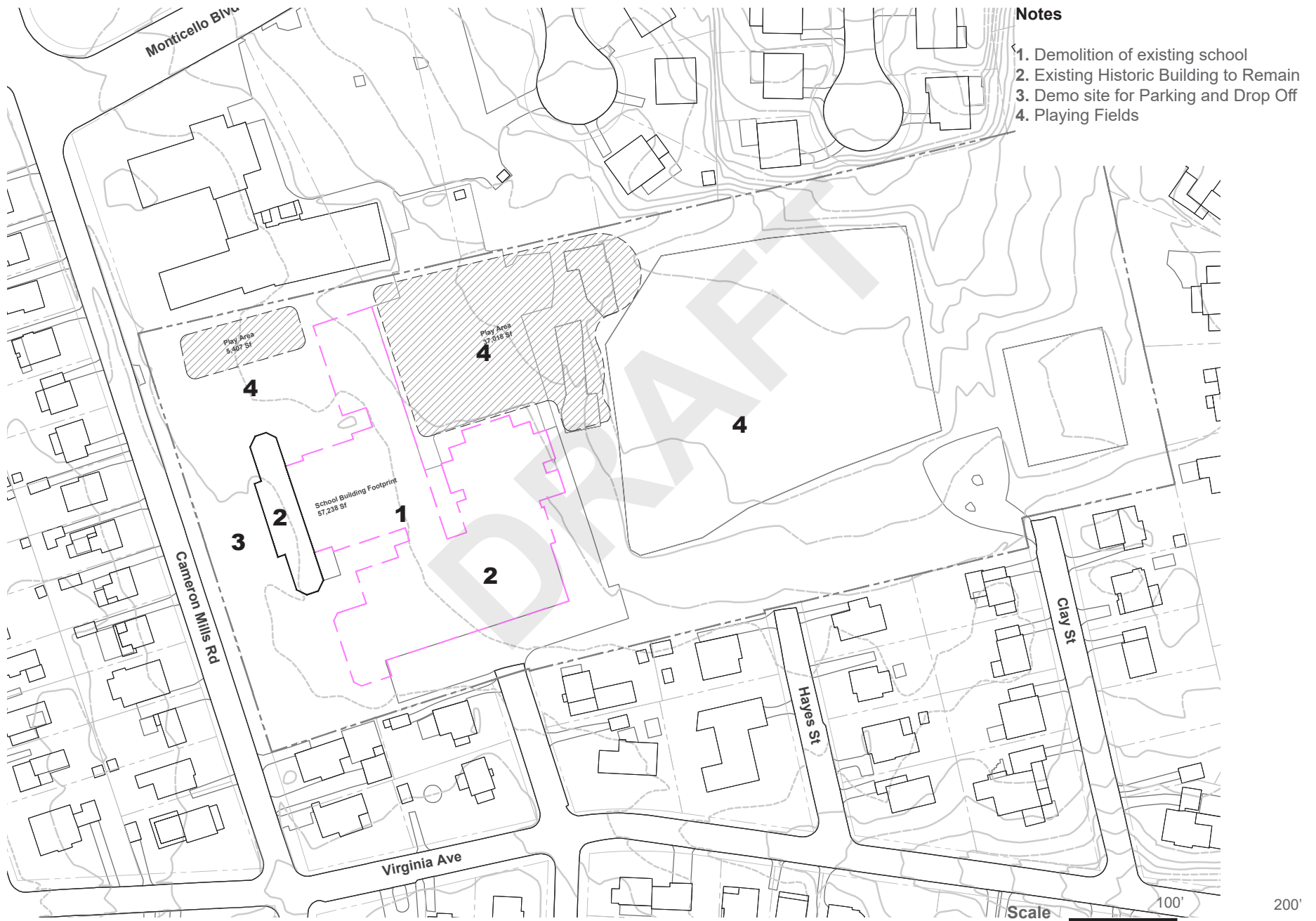


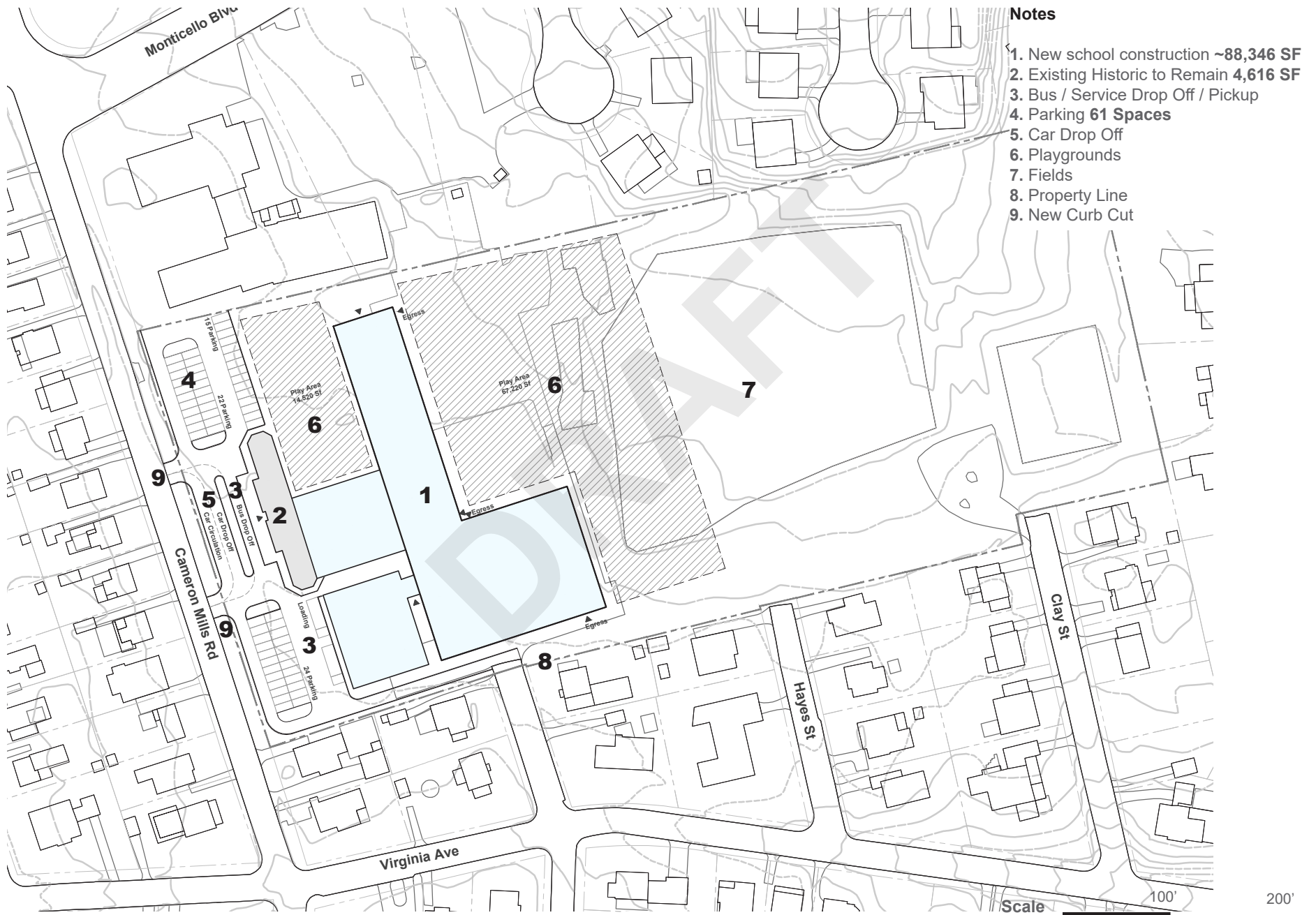
Notes

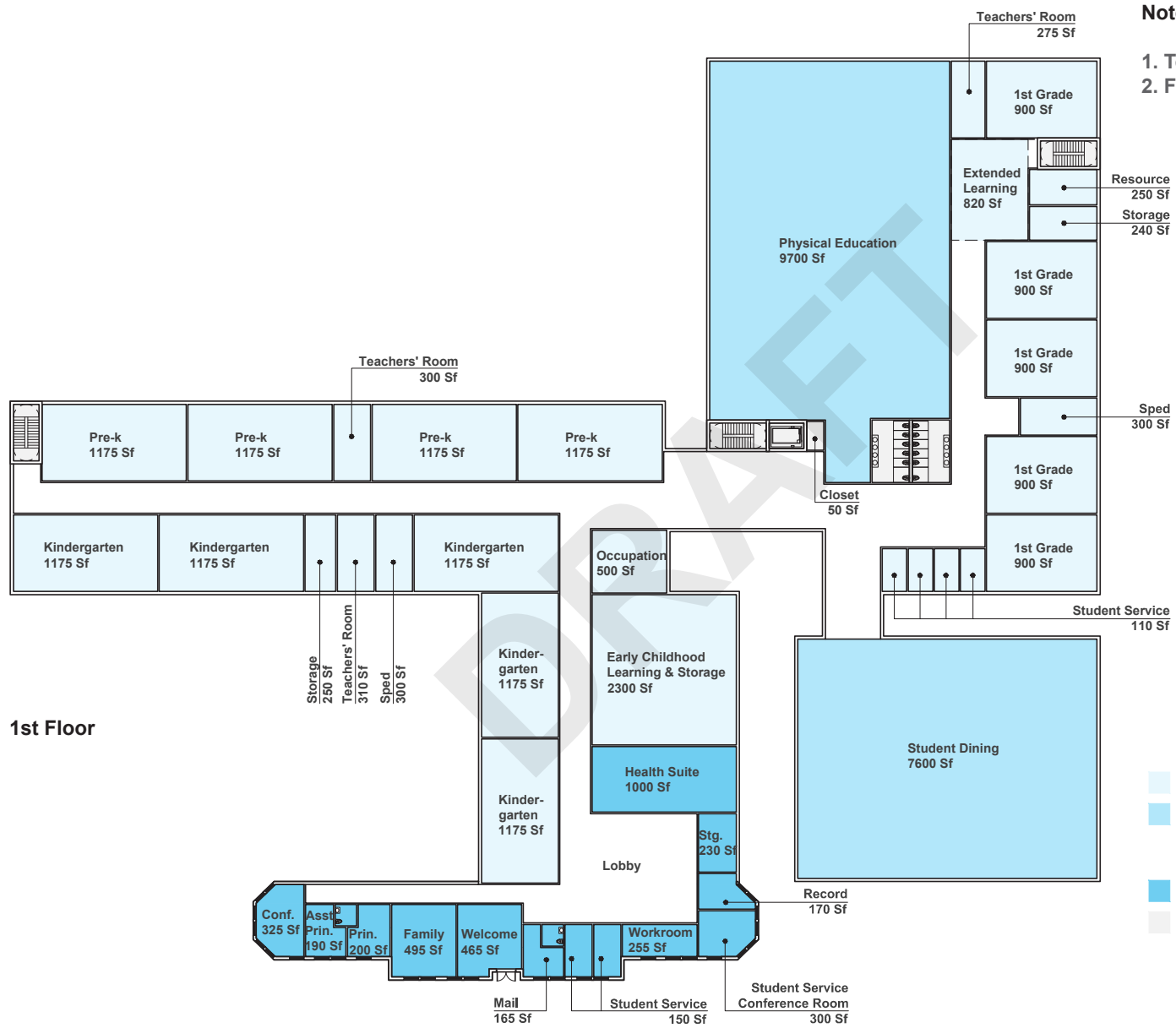
- 1. Partial Demolition of existing school
- 2. Rec Center to Remain and Partial of Existing school to remain.
- 3. Sitework: Increase Drop Off Area







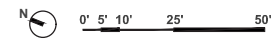




Notes

1. Total Gross Area: **92,962 SF**
2. First Floor Gross Area: **56,264 SF**

- Core Academic/special Ed
- Visual Art/music/science
Media Center/library
Physical Education
Student Dining And Food Services
- Administration
- Maintenance And Custodial Services
Building Services And Restrooms



Educational Specifications Capacity and Program

George Mason Existing 1st Floor plan



Educational Specifications Capacity and Program

George Mason Existing 2nd Floor plan

