



Alexandria City Public Schools

Update: Blueprints for Strong Family-School Partnerships

School Board Meeting
December 14, 2023





Essential Questions:

What is a family engagement blueprint?

What progress has been made in implementing blueprints in ACPS?

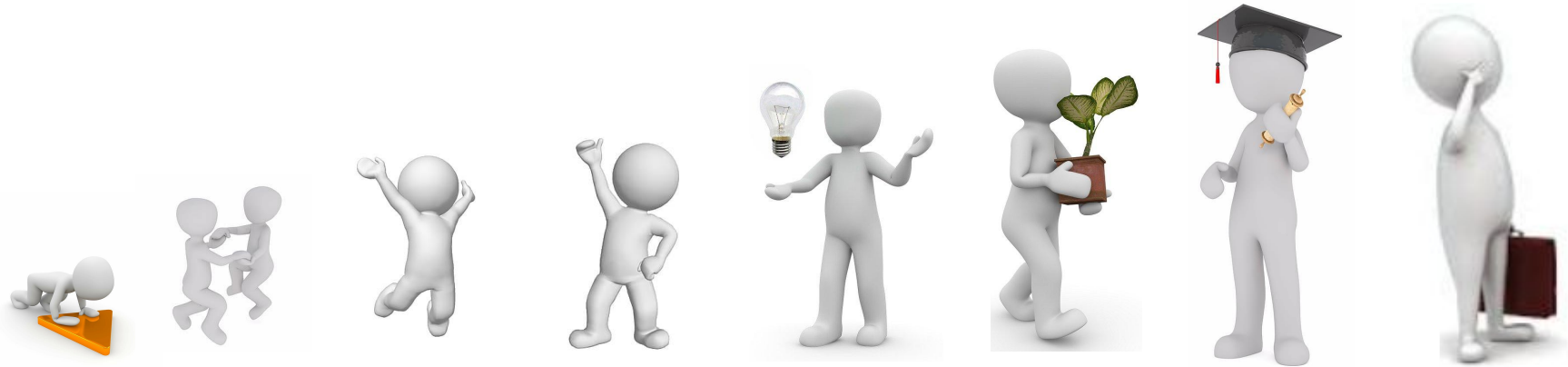
How are stakeholders involved in the blueprint process?

What are the next steps in implementation?



Family Engagement Defined:

Family Engagement is a full, equal and equitable partnership among families, educators and community partners to promote children's learning and development from birth through life, college and career.





Parents and Caregivers



**ACPS Family
Engagement
Strategies**



Engage in meaningful opportunities
to support children's success



Connect families to tools,
information and services



Eliminate barriers
to family engagement



Division and School Staff



ACPS Family Engagement Strategies



Provide tools and resources to aid school staff to reach and engage all families.



Increase cultural understanding of and bridge cultural gaps between school staff and families



Build staff capacity to embed family engagement in learning activities

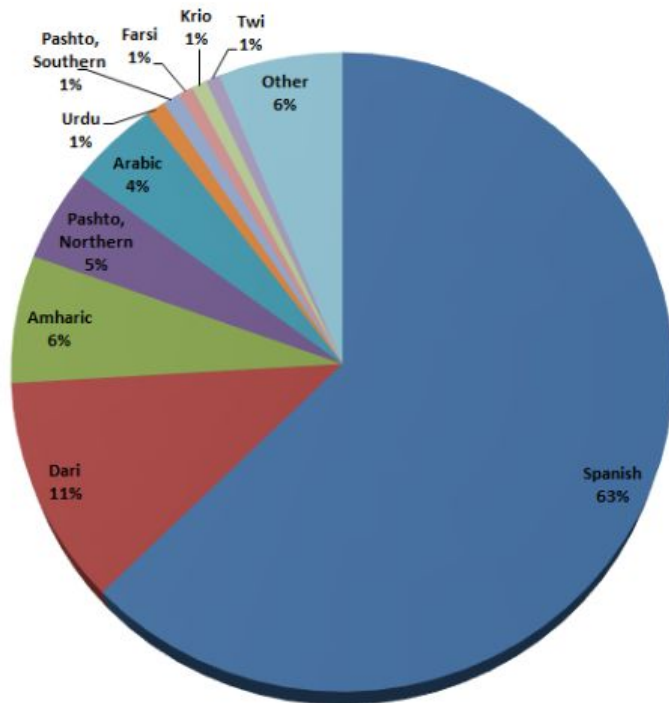


Enrollment Overview

Total ACPS Student Population	16,201
Multilingual Learner (ML) Students	8,916 (55%)
English Learner (EL) Students	6,087 (37.6%)

- ML students represent 113 countries and 119 languages.
- Approximately 47% of EL students in ACPS are born in the U.S.

Top 10 Languages of EL Students



Data Source: SY2023-24 ML Student Fact Sheet and November PowerSchool Data (EL Report)



Family Engagement Is Essential to Student Success.



blueprint [bloo-print]

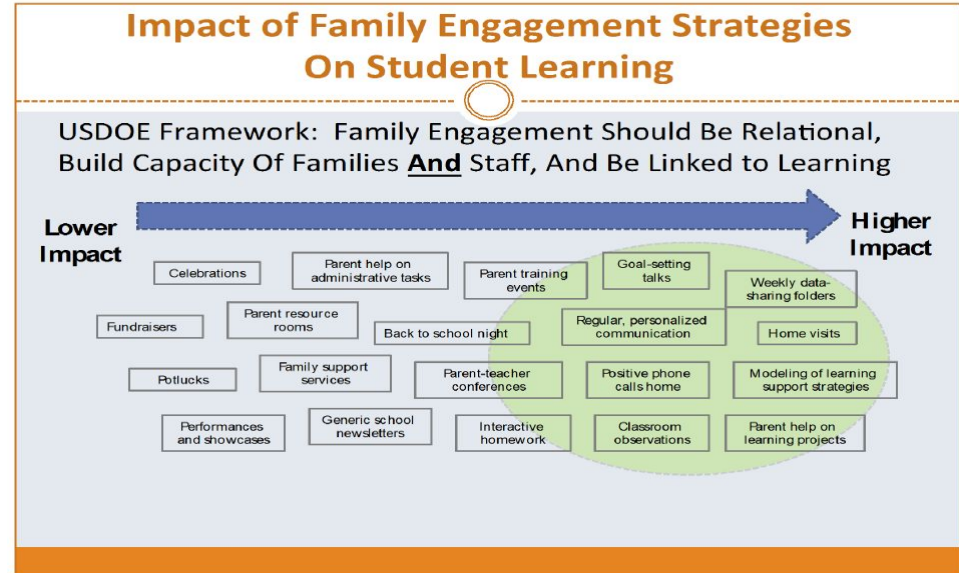
a detailed outline or plan of action

- **Systemic**
- **Integrated**
- **Sustainable**
- **Intentional**



What is a family engagement blueprint?

- School-specific
- Customized plan
- Promotes a community of belonging
- Linked to learning and healthy development
- Supports strategic plan and school improvement plan





ACPS Blueprint Process: Starting Point

- **16 schools across the division** participated in preliminary sessions
- Blueprint toolkit expanded to all ACPS Schools

Meeting date:
 School:
 Principal:
 Blueprint School: Yes/No
 Objective: Discuss collaboration and Family Engagement Plans with FACE

Questions	Answers	Start/Change/Continue
What do you see as an area of strength for your school?		
What do you see as an opportunity for growth?		
How can we align the family engagement plan with SIP?		

FACE Supports

- Professional Learning and training for school community stakeholders
- Welcoming environment walkthrough and assessments
- Assistance, guidance, and training in outreach to families
- Provide rubrics to measure FE practices
- Tools for school staff to build relationships and partnerships with families
- Model events for staff to build programs that are linked to learning
- Provide technical support to develop high impact family engagement
- Provide strategies for high-impact family engagement to align with School Improvement Plan (SIP)
- Workshops for family-facing staff, caregivers, and community members
- Food, childcare, personnel for best practice family engagement events



FACE Blueprint Schools



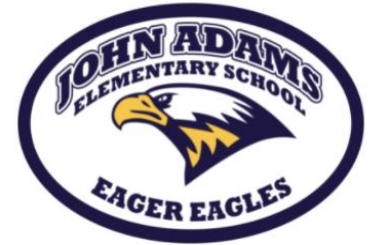
Charles Barrett
Elementary



Cora Kelly
Elementary



George Washington
Middle



John Adams
Elementary



Family Engagement Blueprints by the Numbers

Blueprint Schools	Planning Meetings	11
	Professional Learning Participants	53
	FACE-Supported Family Workshops	55
	Community Collaborations	7

Blueprint for Stronger Family-School Partnerships: Barrett - Family Engagement Dialogue Groups

Goal: create a shared vision of an equitable, inclusive and antiracist school community

- Deeper connections to families & staff
- Stronger sense of community
- Increased collaboration
- 20% increase in Latino family participation at school-sponsored events.



“These sessions were amazing and a breakthrough for our school.”

Charles Barrett Elementary School Family Member

Blueprint for Stronger Family-School Partnerships:

George Washington - EL Parent Connection Nights

Goal: Build partnership with parents of EL students failing 2 or more classes

- Strengthened parent-school collaboration
- Increased parent access to grades, assignments, and attendance
- Increased two-way communication

“They went over-and-beyond in planning...

an all-inclusive event for getting to know one another and more!!”

George Washington Middle School Administrator



Blueprint for Stronger Family-School Partnerships:

Cora Kelly - Family Engagement Mindfulness Extravaganza

Goal: Forming connections between home and school through the mindfulness strategies that students use during academic challenges.

- Increased awareness of gratitude
- Increased access to self-regulation tools
- Practicing RULER strategies that can be used at home

“Students really are talking about how they feel more, and we see a decrease in behavior.”

Cora Kelly Administrator



Blueprint for Stronger Family-School Partnerships: John Adams - Welcoming Front Office Professional Learning

Goal: Support commitment to customer service and why it is important in a public school office

- Collaborative commitment to customer service
- Paradigm shift from welcoming environment to community of belonging



“The conduct of each of us reflects on all of us.”

John Adams staff member



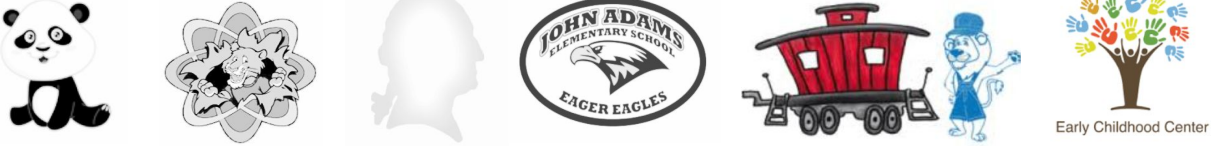
The Blueprint Process Transforms Family Engagement





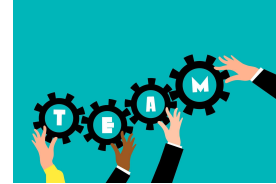


What's Next? FACE Blueprint School Expansion

<p>As of 2023-24</p>	
<p>2024-25</p>	<p>+ 2 Schools</p>
<p>2025-26</p>	<p>+ 2 Schools</p>
<p>2026-27</p>	<p>+ 2 Schools</p>



What's Next? Family Engagement Action Teams



Collaborative group of caregivers, school staff, community members and secondary students, when applicable, working together to:

- cultivate communities of belonging and elevate diverse voices
- co-design family engagement practices that ensure equitable access
- empower families and staff through capacity-building
- share community concerns and feedback on ACPS programs



What's Next? Family Engagement Action Teams

- Family engagement teams will determine activities, strategies and capacity-building needed



2023-24	5 School Teams; 1 Division Team
2024-25	+2 School Teams
2025-26	+2 School Teams
2026-27	+2 School Teams



What's Next? Implementation Timeline - *Updated*

Year 2	<ul style="list-style-type: none">● Blueprint implementation● Add schools to blueprint process● Formation of Family Engagement Action Teams (FEAT)● Data-driven goals in alignment with the ACPS strategic plan and SIPs● Tiered approach to family engagement● Professional Learning for FEATs
Year 3	<ul style="list-style-type: none">● Continued professional learning● Expansion to additional schools● Stakeholder capacity-building



What's Next? Implementation Timeline - *Updated*

Year 4	<ul style="list-style-type: none">● Ongoing professional learning● Expansion to additional ACPS schools● Reflective, collaborative adjustment to FEAT plans
Year 5	<ul style="list-style-type: none">● Expansion to additional ACPS schools● Reflective, collaborative review with schools for adjustments● FEATs will design best practice family engagement with coaching and professional learning from FACE



Key Takeaways

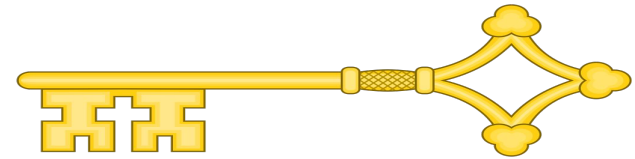
Strong, trusting relationships lay the foundation for all other efforts

Authentic two-way communication is required

Family-school-community partnerships are transformative

Meaningful family engagement must be systemic and sustained

Family engagement is equity work





Alexandria City Public Schools

Questions?

Avanda Williams-White,
Family Engagement Coordinator

Krishna Leyva,
Assistant Director of Family & Community Engagement



Superintendent

Dr. Melanie Kay-Wyatt

School Board

Michelle Rief, Chair
Kelly Carmichael Booz, Vice Chair

Meagan L. Alderton
Abdel-Rahman Elnoubi

Jacinta Greene
Christopher Harris

Tammy Ignacio
Ashley Simpson Baird

