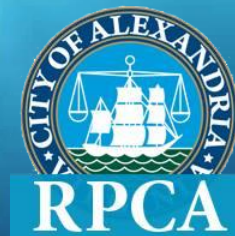
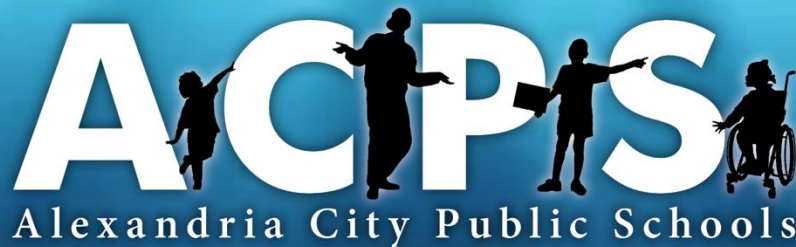


Patrick Henry School and Recreation Center

School Board Meeting

Thursday, September 15, 2016

7:00 PM



Patrick Henry School and Recreation Center

- Since May School Board Meeting
 - Design Process
 - DSUP Review Process
 - Community Engagement
- Design Update
- Schedule Update
- Next Steps

Since May School Board Meeting

Design Process

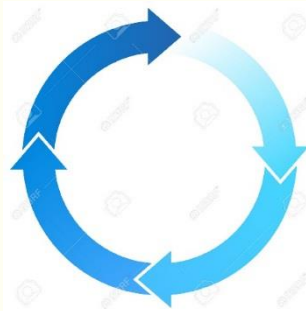
- Selected design concept advanced by project team
- Developments regarding space planning, façade, materials, building systems, site layout and topography
- Frequent departmental meetings to support iterative process (facilities, food service, IT, security, etc)

Project Design Review Team

Architect · Engineers · Project Manager · ACPS & City Staff

City (DSUP) Reviewers

Planning & Zoning · Traffic & Environmental · Public Safety



ACPS

School staff · Operations & Maintenance · Administration

RPCA

Centers Staff · Senior Managers · Operations & Maintenance

Since May School Board Meeting

DSUP Approval Process

- Concept II submission made June 24th
- Comments received July 15th
 - Supportive of building and site plans
 - Civil and site engineering details
 - Open space developments and site circulation
- Completeness submission made August 11th – expect comments by September 1st
- Preliminary Site Plan due September 20th to hold public hearings in December

Since May School Board Meeting

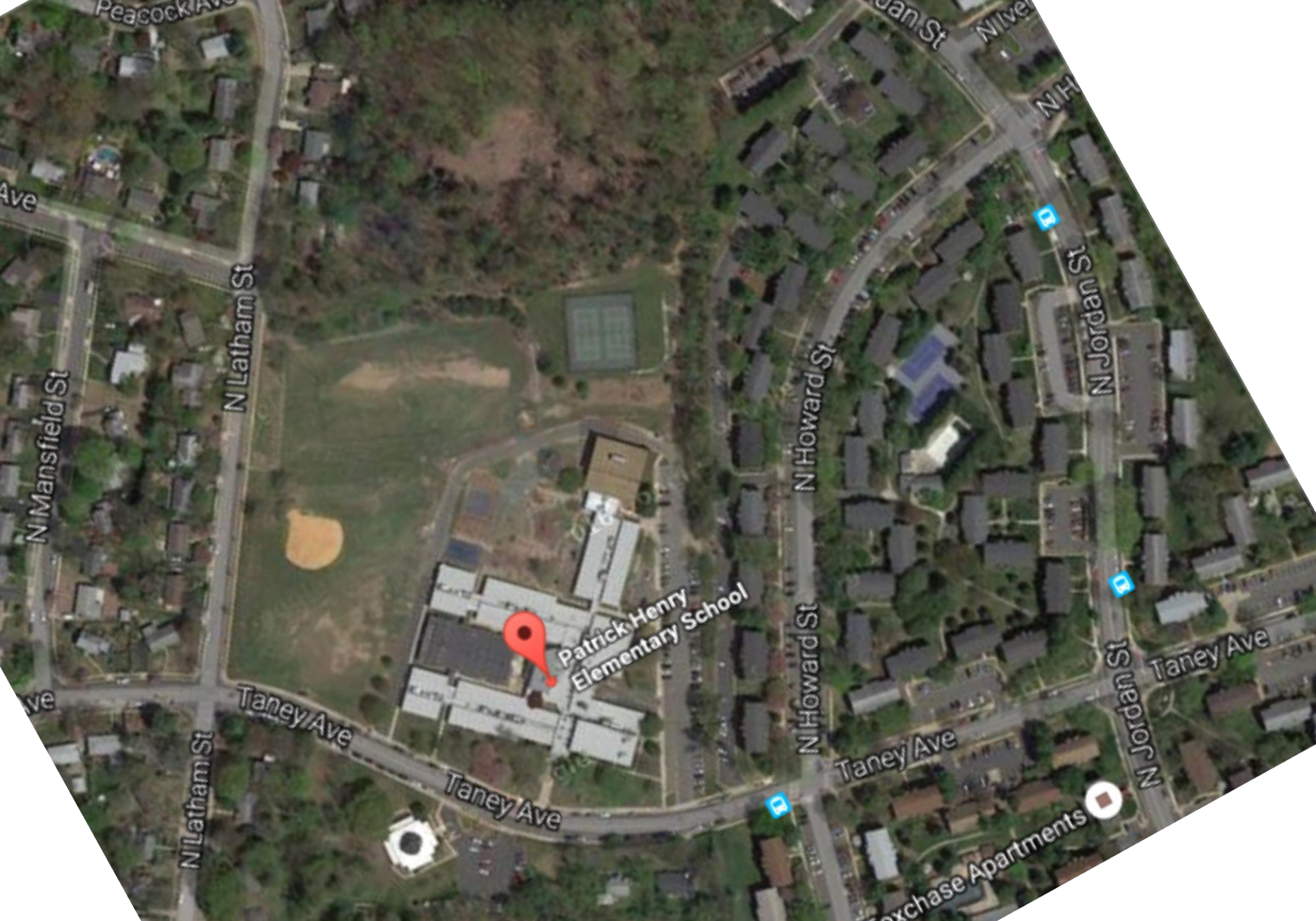
Community Engagement

- Advisory Group meetings held in June, July, and August
- Floor plans and site plans reviewed in detail
- Comments and suggestions noted by Advisory Group during July meeting for addressing in August
- Broader community provided electronic updates including design plans and images
- School parent focus group
- Design team meeting with PTAT playground group

Since May School Board Meeting

Community Engagement

- Advisory Group and Community meetings to reconvene in late September for design update
- Meeting with Alexandria Commission for the Arts in mid September
- Future meetings to focus on construction planning
- Back to School Night on September 22nd

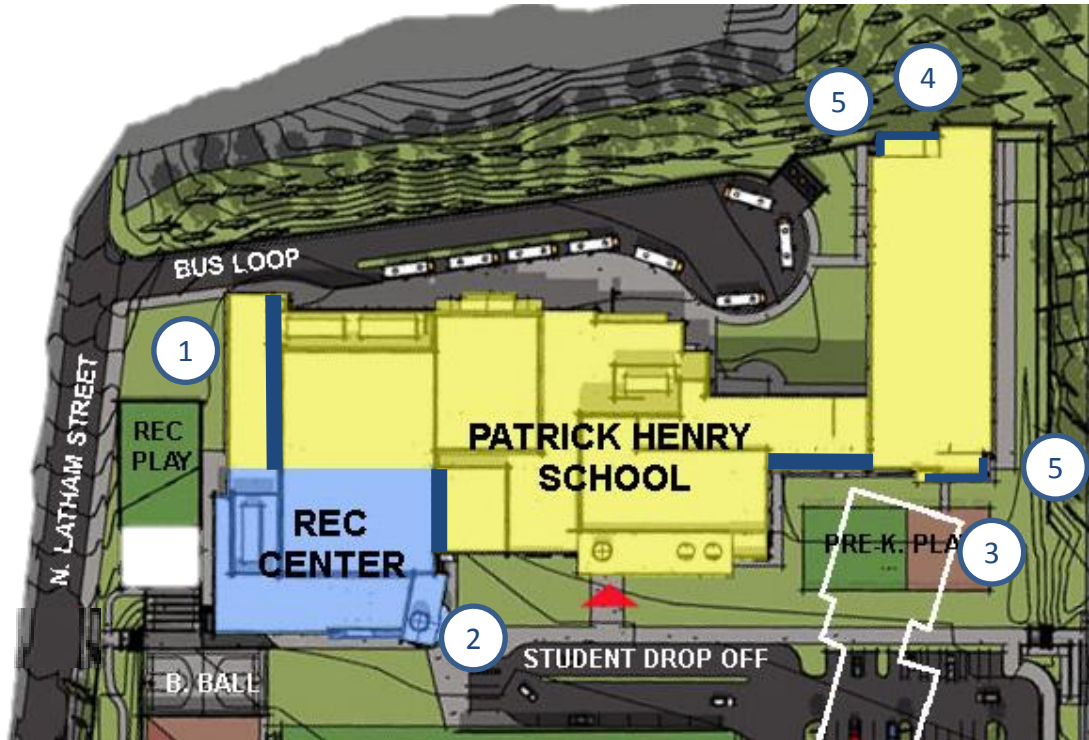


Patrick Henry PreK-8 School and Recreational Facility



Patrick Henry PreK-8 School and Recreational Facility

Design Constraints and Factors Influencing Building Size

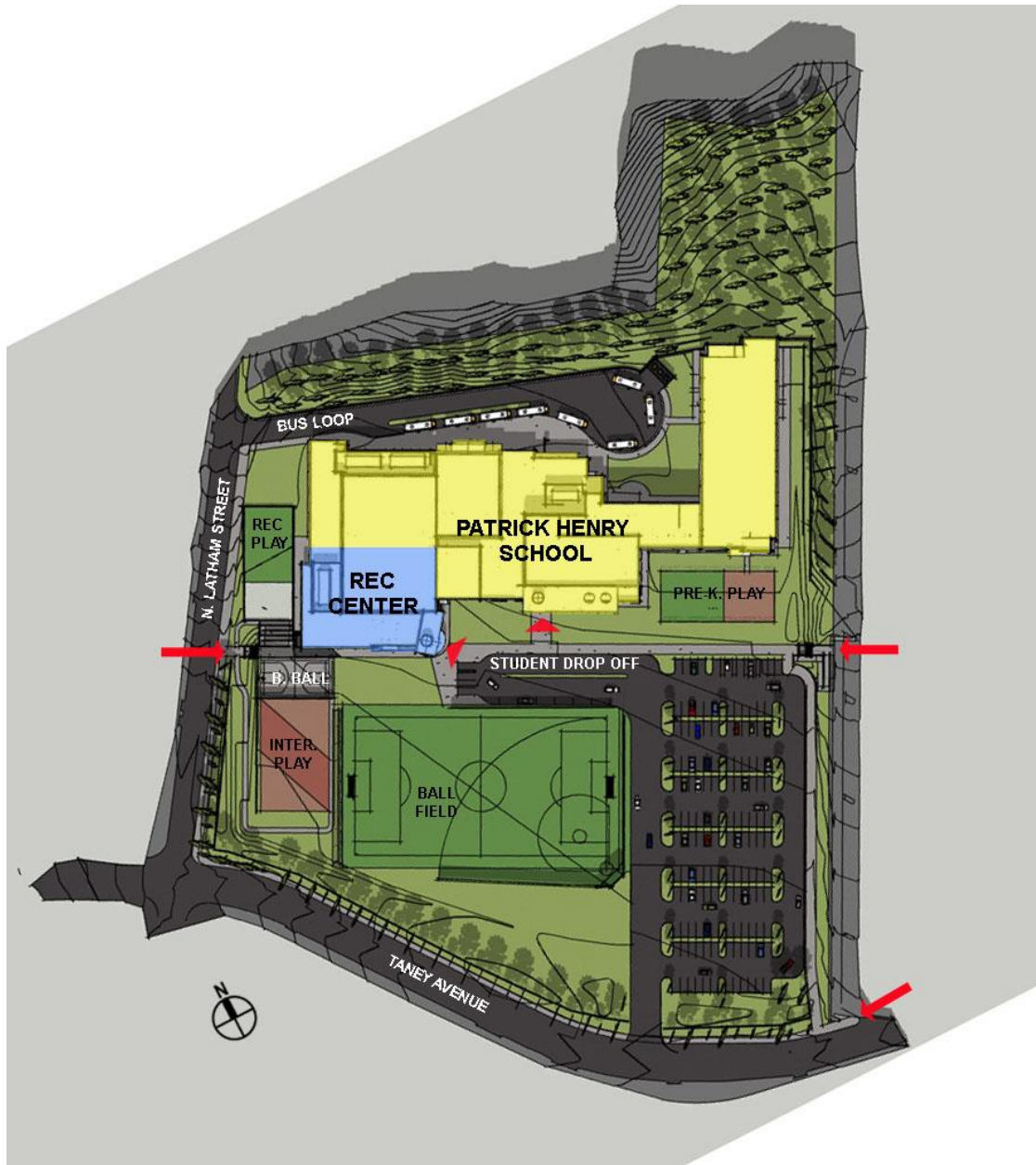


Constraint

- 1 – Desired massing off Latham Street
- 2 – Direct access needed to athletic fields
- 3 – Prevent overlap with existing building
- 4 – Conflict with power lines
- 5 – Challenging site topography
- 6 – Staff Work Room Needed

Effect

- Added circulation space around Gym structure
- Added circulation space around Rec Center
- Less efficient corridor access to classroom wing
- Less efficient corridor access to classroom wing
- Increased size of stairwells for egress
- Space added to second floor



Site

13.82 Acres

Building

1st floor – 99,378 sf
 2nd floor – 35,377 sf
 3rd floor – 20,803 sf
 Total 155,558 sf

School

137,475 sf

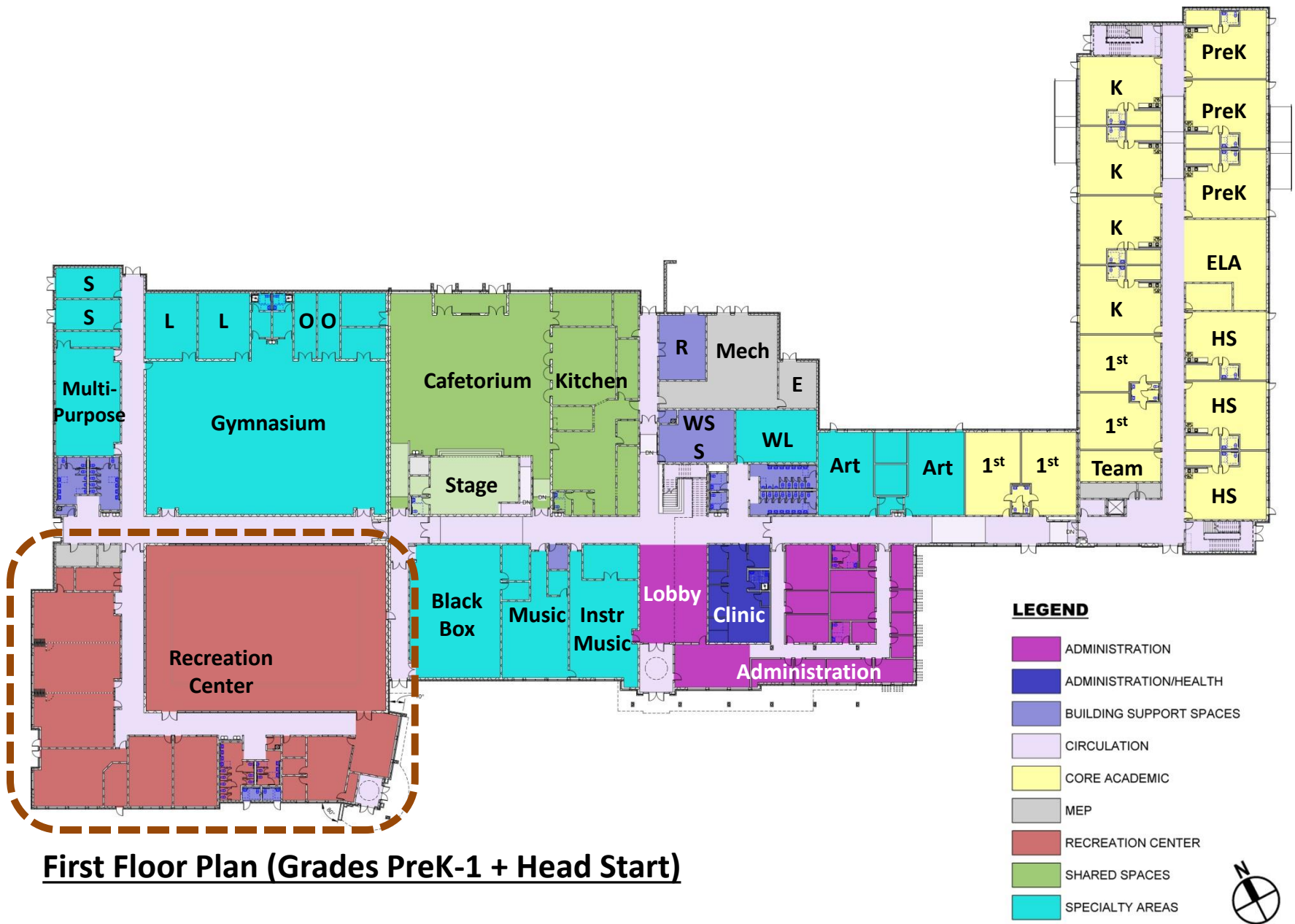
Recreation Center

18,083 sf

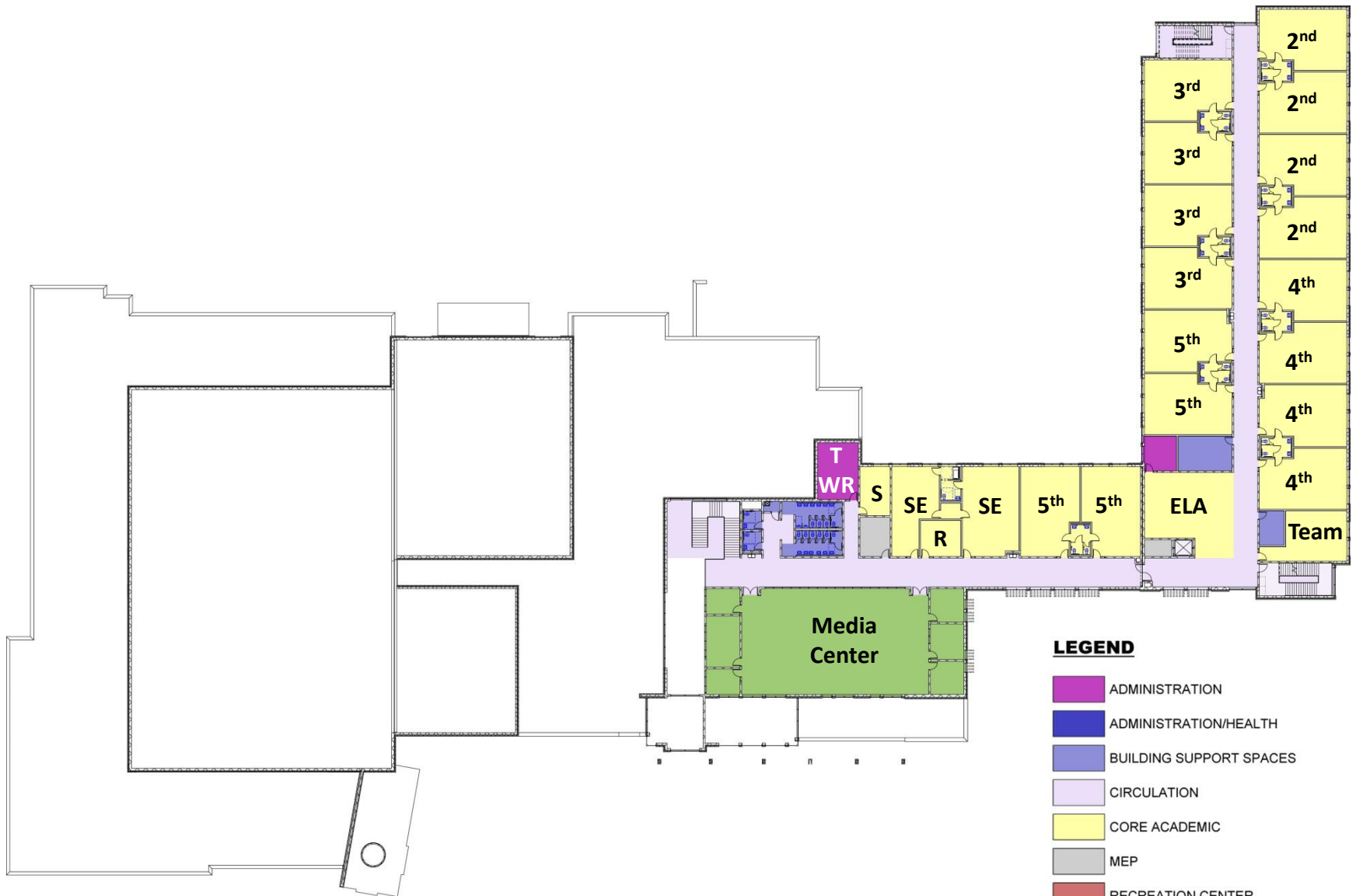
Parking

Required - 137

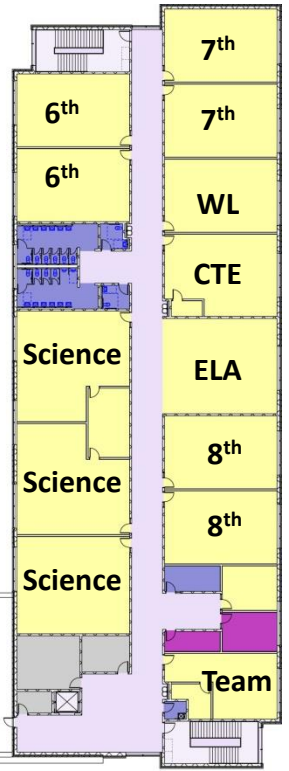
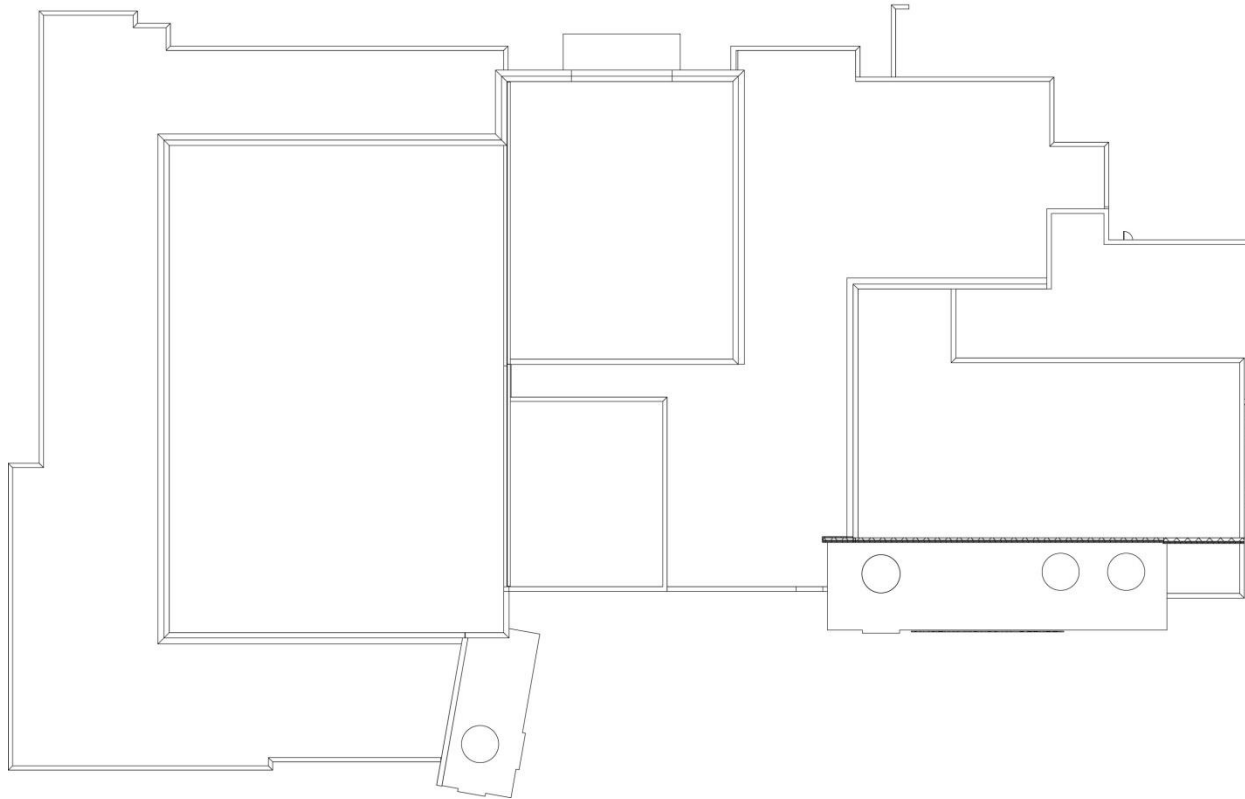
Provided - 145



First Floor Plan (Grades PreK-1 + Head Start)



Second Floor Plan (Grades 2-5)



Third Floor Plan (Grades 6-8)

LEGEND

- ADMINISTRATION
- ADMINISTRATION/HEALTH
- BUILDING SUPPORT SPACES
- CIRCULATION
- CORE ACADEMIC
- MEP
- RECREATION CENTER
- SHARED SPACES
- SPECIALTY AREAS





OVERALL FRONT ELEVATION

SCALE: 1" = 20'-0"



OVERALL LEFT SIDE ELEVATION

SCALE: 1" = 20'-0"



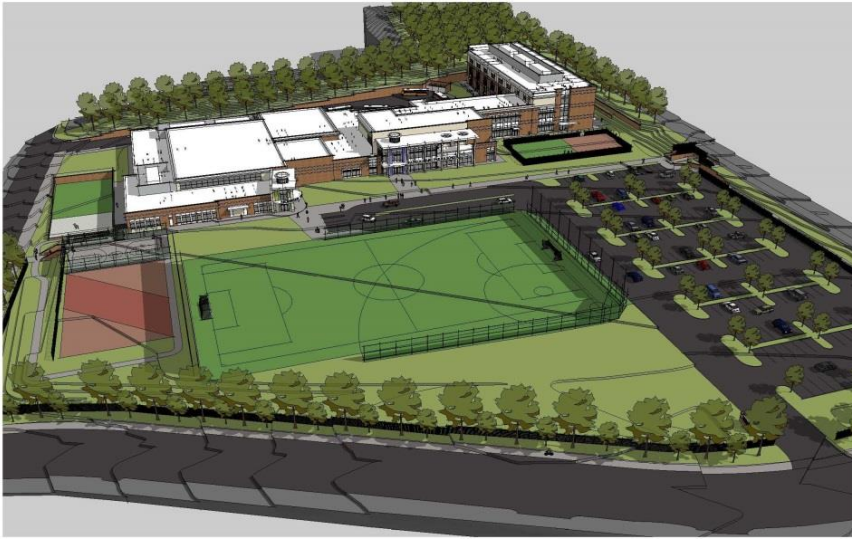
OVERALL REAR ELEVATION

SCALE: 1" = 20'-0"



OVERALL RIGHT SIDE ELEVATION

SCALE: 1" = 20'-0"



TANEY AVENUE AERIAL 1



TANEY AVENUE AERIAL 2



ACADEMIC WING AERIAL



BUS LOOP AERIAL



BUILDING ENTRIES VIEW



ENTRY DRIVE VIEW



NORTH LATHAM STREET VIEW

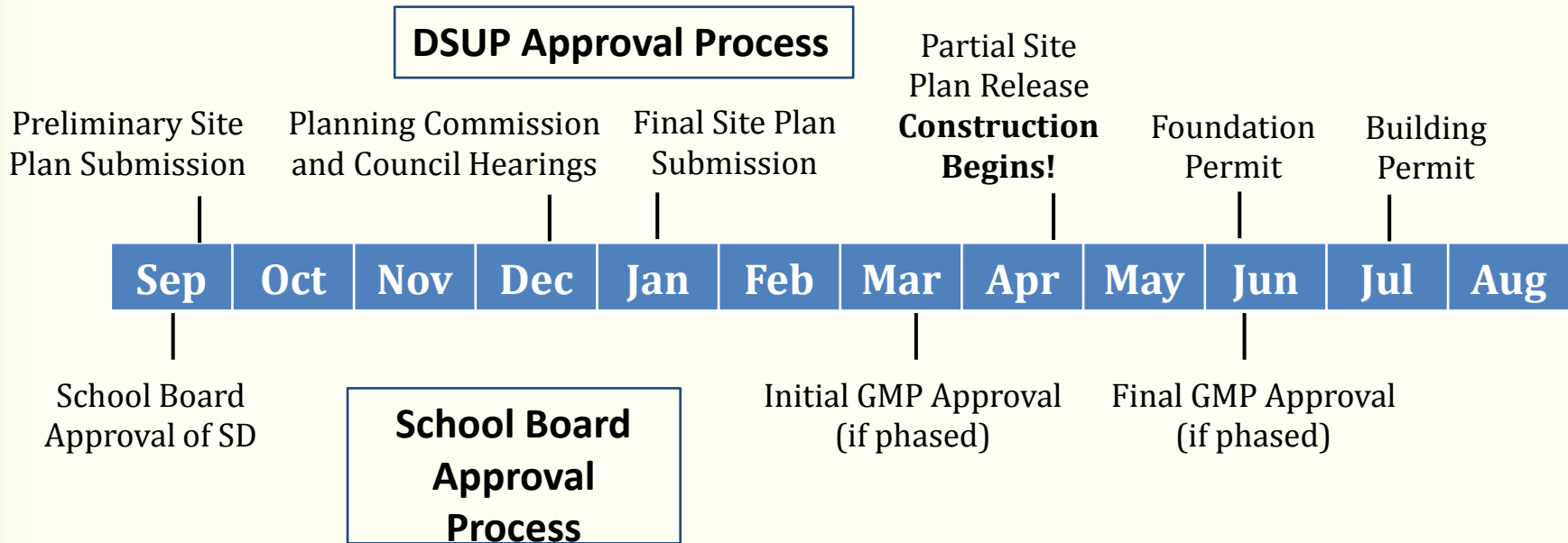


BUS LOOP VIEW



Patrick Henry PreK-8 School and Recreational Facility

Project Schedule Overview – 12 Months Ahead



- Large scale changes to schematic design could delay DSUP schedule
- Phasing of Guaranteed Maximum Price (GMP) to be explored based on cost estimates received throughout Design Development phase
- Community meetings bimonthly through design, quarterly through construction

Next Steps

- School Board vote on schematic design on September 15th
- DSUP Preliminary Site plan submission September 20th
- Community Engagement
 - Community meeting for design update
 - Advisory Group meetings through November 2016
 - Begin focus on construction phasing and planning
- Project team continues collaboration to design and build school and recreation center of the future!

QUESTIONS?