

# Douglas MacArthur Concepts

**School Board Meeting**

February 6, 2020



**EVERY STUDENT SUCCEEDS**

# Essential Questions

- What is the space program for Douglas MacArthur?
- What are the concepts being considered for design?
- How do the concepts compare?
- What are the cost and schedule implications for each concept?
- What are the next steps?

# Overview of Activities to Date

ST

## School Team Meetings (2)

- Visioning activities
  - Readiness Tiers
  - I See/We See
  - Cultural Continuum
  - Keep, Toss, Create
  - Image Walk
- Concept Reviews
  - Pros/Cons

Cm

## Community Meetings (4)

- Visioning activities
  - Hopes and Concerns
  - Mind, Body, Spirit
  - Community Continuum
  - Keep, Toss, Create
  - Image Walk
  - Readiness Tiers
- VALUES
- Concept Reviews
  - Pros/Cons

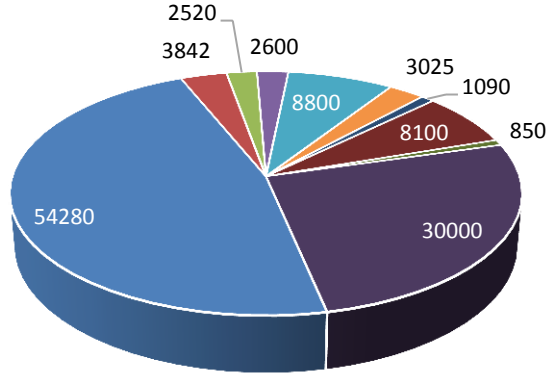
AG

## Advisory Group Meetings (3)

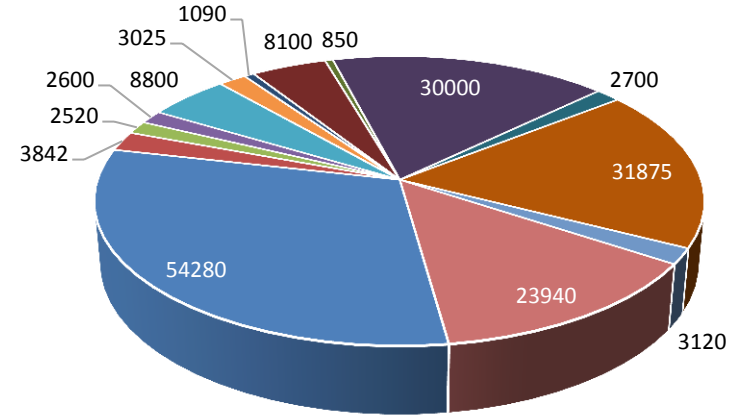
- Procedures/ Process Review
- Visioning activities
  - 2023 Success
  - Community Recap
  - School Team Recap
- Concept Reviews
  - Pros/Cons

# Space Program

Ed Spec Program



Expanded Program



- Core Academic
- Administration
- Self-Contained Special Ed
- Media Center
- Health Suite
- Parking Garage
- Visual Arts
- Student Dining
- RPCA Capacity Needs
- Music
- Building Engineering
- RPCA Expansion
- Physical Education
- Building Support

Major Ed Spec Spaces Included

16 Early Childhood classrooms	2 Music
22 Upper Elementary classrooms	Gym & Multi-purpose
Media Center	Administration & Health
2 Visual Arts	Dining with Performance Platform

Expansion Spaces

Currently Included	Easily Accommodated	Optional Expansion
3 Self-Contained Special Ed classrooms	RPCA Offices	RPCA Bleacher Seating
85 Below-grade Parking spaces	RPCA Restrooms	RPCA Flex Court
	RPCA Storage	

\*Not shown, but considered, were other City Services such as Housing, Health, Day Care

# Co-location

## City Services Co-location Options Under Consideration

“After much discussion between the City government and ACPS at many levels, we have jointly decided to direct our staff and consultants not to proceed further with analyzing affordable and workforce housing co-location options at the proposed new MacArthur Elementary School. Other smaller scale co-location options such as recreational programming/facilities will continue to be explored for the new MacArthur building.”

# Concept Review

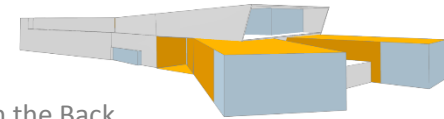
## “Y”



Site Plan



View From the Front



View From the Back

Massing Diagrams



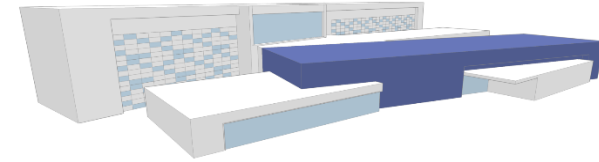


# Concept Review

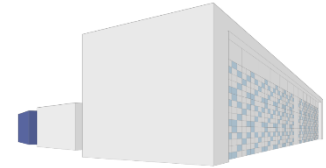
## “Forest”



Site Plan



View From the Front



View From the Back

Massing Diagrams





# Pro Con Comparison



## Y

### Pros

- Play space behind school
- Large contiguous play space
- Gymnasium close to the play area
- Traffic Flow
- Optimal use of space
- Entrance transparency

### Cons

- Entry sequence needs work to be more welcoming
- 3-story building height close to Janneys Lane
- No buffer to residents on the west side of the site
- Large play space is hidden
- Traffic:
  - Parents & staff shared drive
  - Potential traffic spill-out on to street



## Forest

### Pros

- Community feel
- Building scale
- Forest view from classrooms
- Entry plaza
- Vehicular access
- Organization of open space

### Cons

- Organization of the play areas
- Building height and proximity to Janneys Lane
- No buffer to residents on the west side of the site
- 3-Story Bar
- Entrance not visible from Janneys Lane and Yale Drive
- Traffic:
  - Parent & Staff shared drive
  - Potential traffic spill-out on to street

# School Board Vote Impact

## School Board Decision informs:

- General site placement
- Overall organization of site elements
- General relationship of interior building elements
- Overall approach to building mass

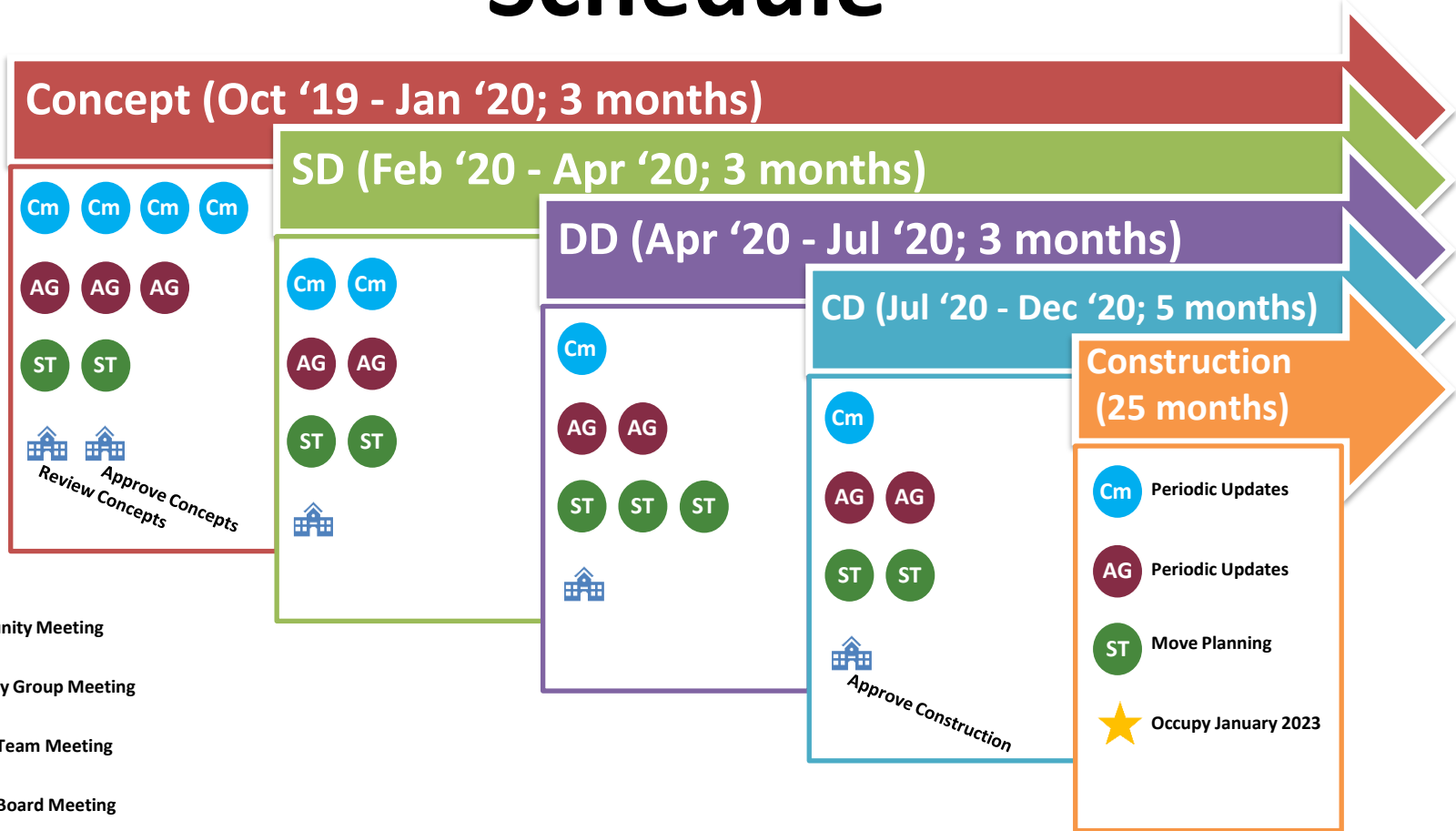
## Things that could evolve through the spring:

- Locations of parking/ site access points
- Interior layout
- Articulation of building elements
- Materials
- Elevations
- Specific massing

# Cost Comparison

	Scheme	
	Forest	Y
<b>First Floor SF</b>	61,085	58,256
<b>Second Floor SF</b>	60,085	38,020
<b>Third Floor SF</b>	22,770	36,569
<b>Total GSF</b>	143,940	132,845
<b>Total \$/GSF</b>	\$422/GSF	\$427/GSF
<b>Schedule Duration</b>	July 2020 - December 2022	July 2020 - December 2022

# Schedule



# Questions?

Community Feedback: [newmacarthur@acps.k12.va.us](mailto:newmacarthur@acps.k12.va.us)

Mignon Anthony  
Chief Operating Officer  
[mignon.anthony@acps.k12.va.us](mailto:mignon.anthony@acps.k12.va.us)

Erika Gulick  
Director of Capital Programs, Planning & Design  
[erika.gulick@acps.k12.va.us](mailto:erika.gulick@acps.k12.va.us)