

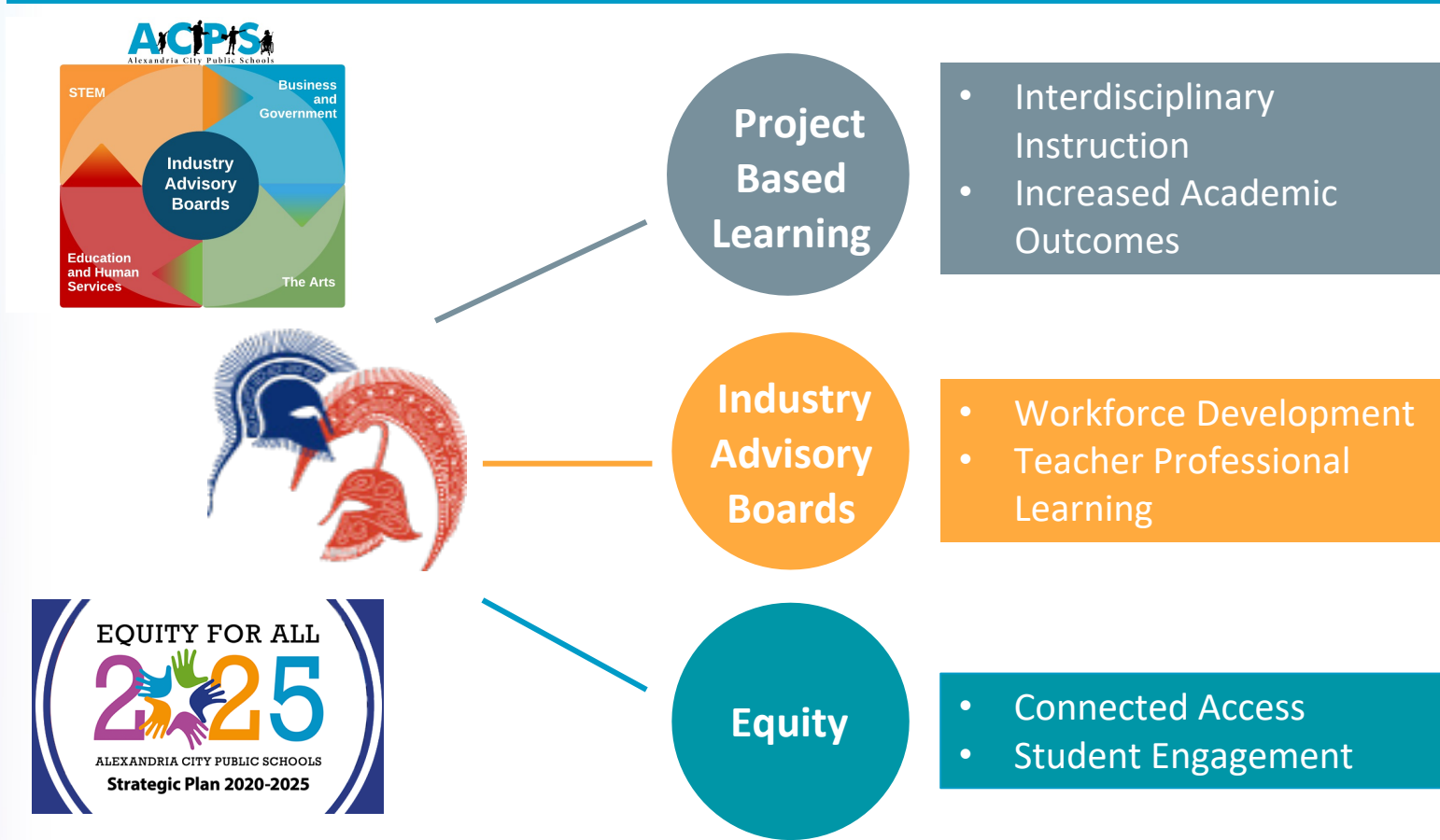
The High School Project



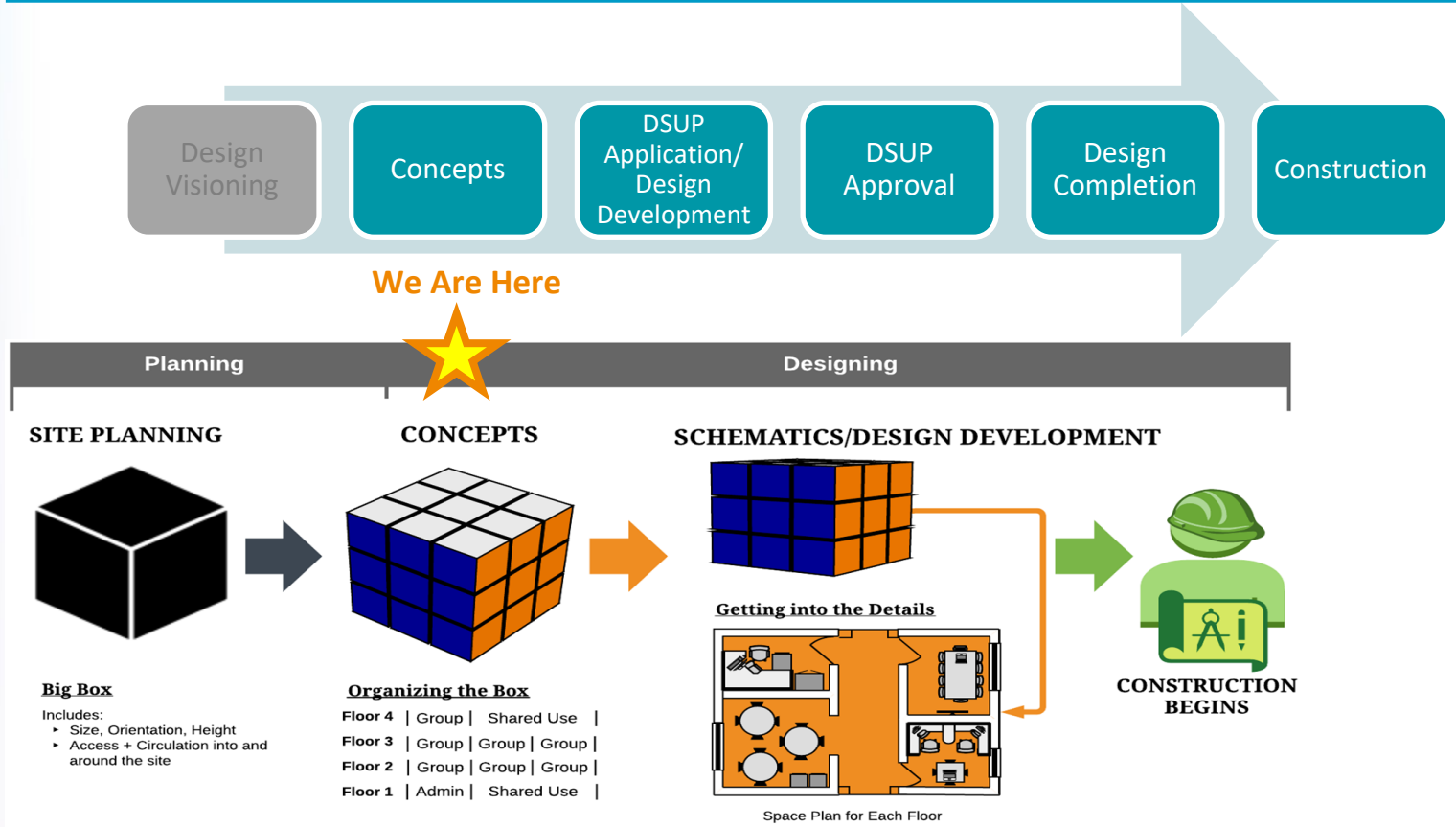
CTE Advisory Committee Meeting

March 23, 2021

Minnie Howard Campus - Instructional Priorities



Where We Are Now



Community Survey Summary

Total Survey Submitted: 216

Q1. *What is **important** to you in the redevelopment of Minnie Howard Campus?*

Answer: Capacity for Student Enrollment Growth | Flexible & Adaptive Spaces

Q2. *If you were designing the redevelopment Minnie Howard Campus, what **features** of the site or building would you like to include?*

Answer: Innovative & Tech Ready | Collaborative & Hands-on Learning Spaces

Q3. *Please **prioritize** the concepts /ideas you think are most important in the design?*

Answer: Design for Education | Community Access

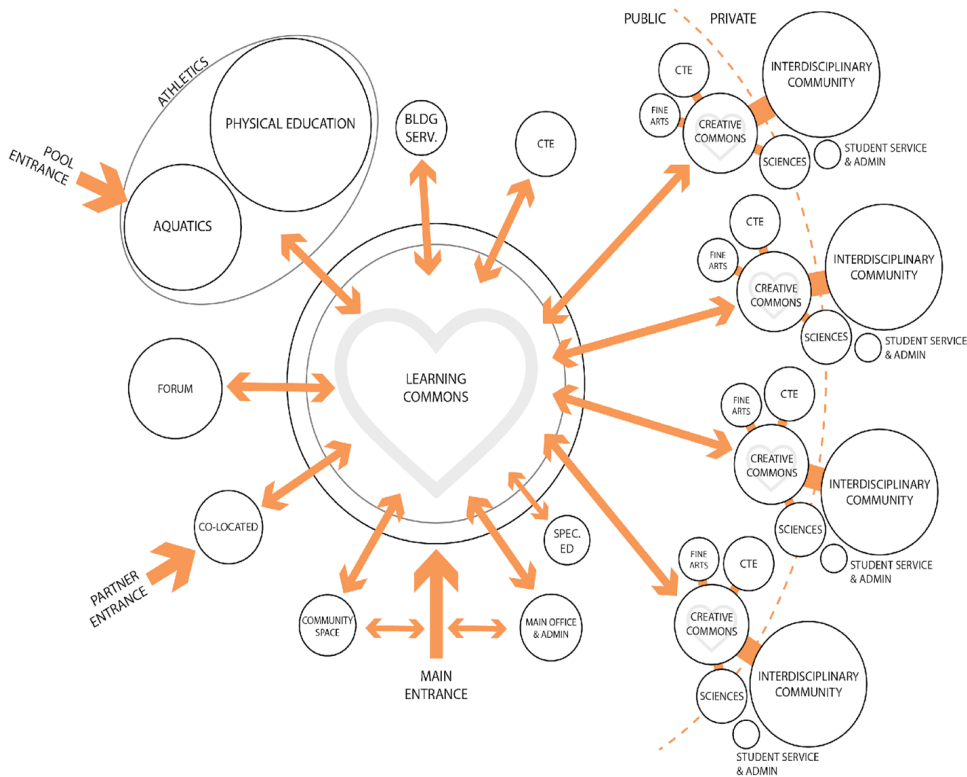
Q4. *What are your **biggest concerns/worries**, if any, regarding the design of the redeveloped Minnie Howard Campus?*

Answer: Traffic | Noise | Safety

Read Full English Responses: https://docs.google.com/spreadsheets/d/14K23wvKr-iHETRp_IW3Ej7PbmYEFlu8m6qH-nY-DVnc/edit#gid=869085162

Read Full Spanish Responses: https://docs.google.com/spreadsheets/d/1F1pdcUk2SmjHafPn1GigoDw3MUeiOVb3logHNAMo_el/edit?usp=sharing

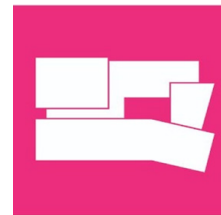
Bringing Minnie Howard Campus to Life



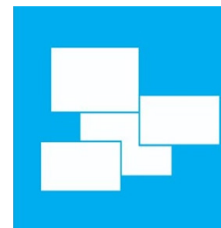
The Hand Concept



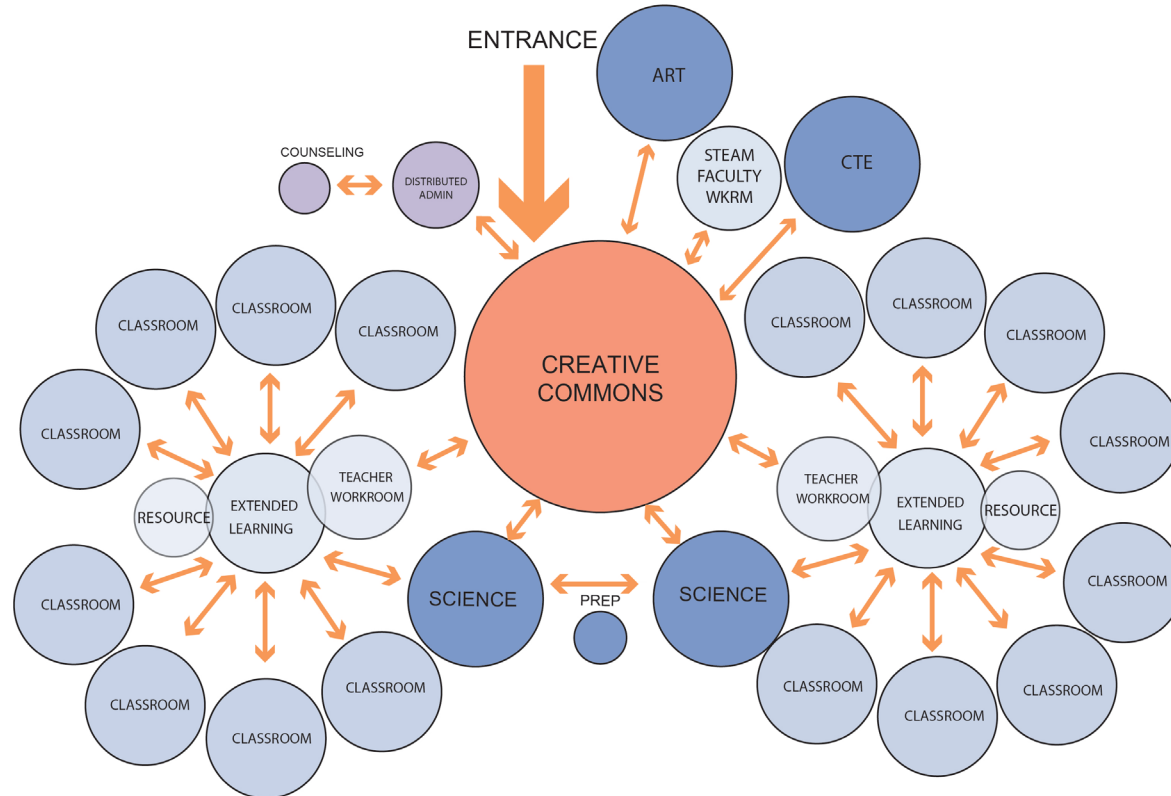
The Crescent Concept



The Pinwheel Concept



An Interdisciplinary Community



A Creative Commons

SERVERY & FOOD STORAGE

Fast access food services within the creative commons and a short distance from the adjacent neighborhoods.

ARTS, CTE, & SCIENCE CLASSROOMS

Classrooms would have fixed perimeter cabinetry including sinks and non-fixed desk furniture to allow for flexible room arrangements. Adjacent classrooms would share prep and storage rooms. Hallway facing walls would have operable thresholds to allow for overflow activities and events with the creative commons.

CREATIVE COMMONS

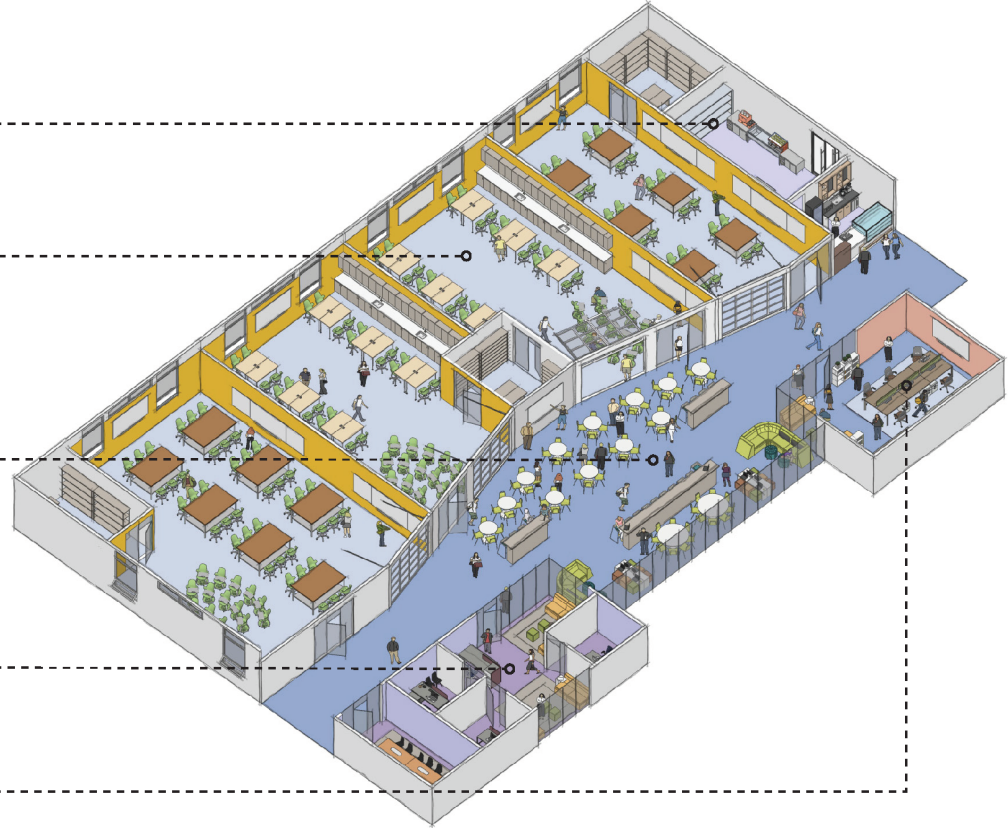
The Creative Commons includes a rich array of settings for activities as well as providing places for students and faculty to eat, study and socialize. A variety of furniture options will allow students to self select their preferred ergonomic scenario to best support different modes of individual and group interaction and study.

INTERDISCIPLINARY COMMUNITY ADMIN & CONFERENCE

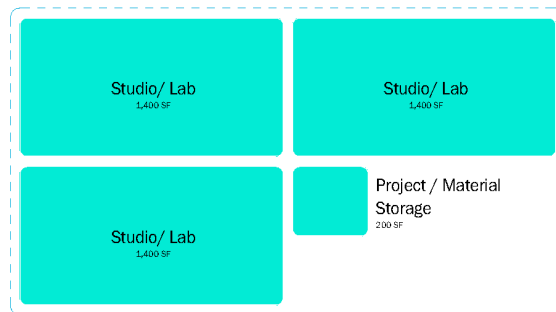
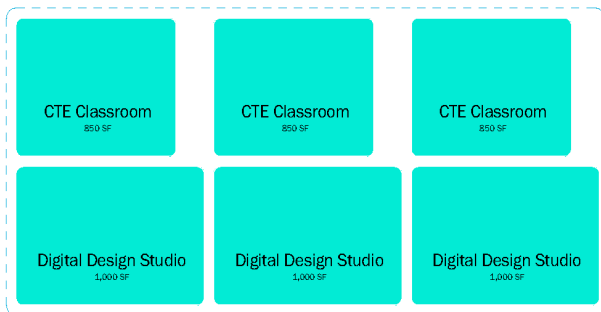
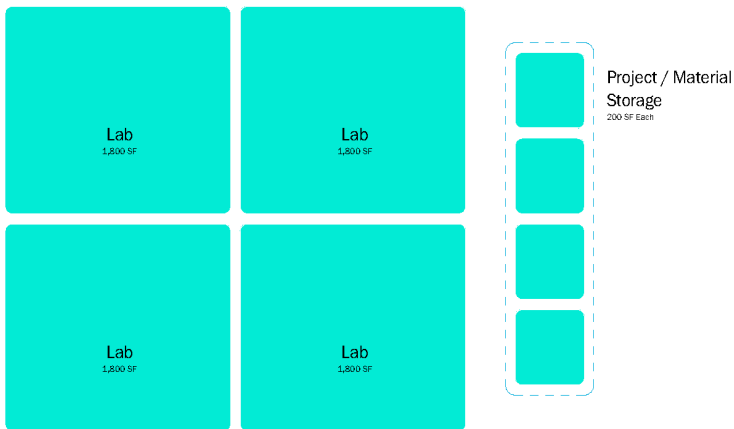
Faculty administration spaces located adjacent to the heart of each Interdisciplinary Community.

TEACHER WORKROOM

Teacher Workroom containing "benched" workstations, discussion space, kitchenette, and filing/supply storage.



CTE Space Projection



CTE_01						
SPACE DESCRIPTION	COUNT SPACES		STUDENT CAPACITY		NET AREA (m²)	
	CAPACITY	ACTUAL	EACH ROOM	SUB TOTAL	EACH ROOM	SUB TOTAL

CTE 1: Fabrication/Construction Management Lab

1. Lab	0	4	0	0	1,800 SF	7,200 SF
2. Project / Material Storage	0	4	0	0	200 SF	800 SF
				0		8,000 SF

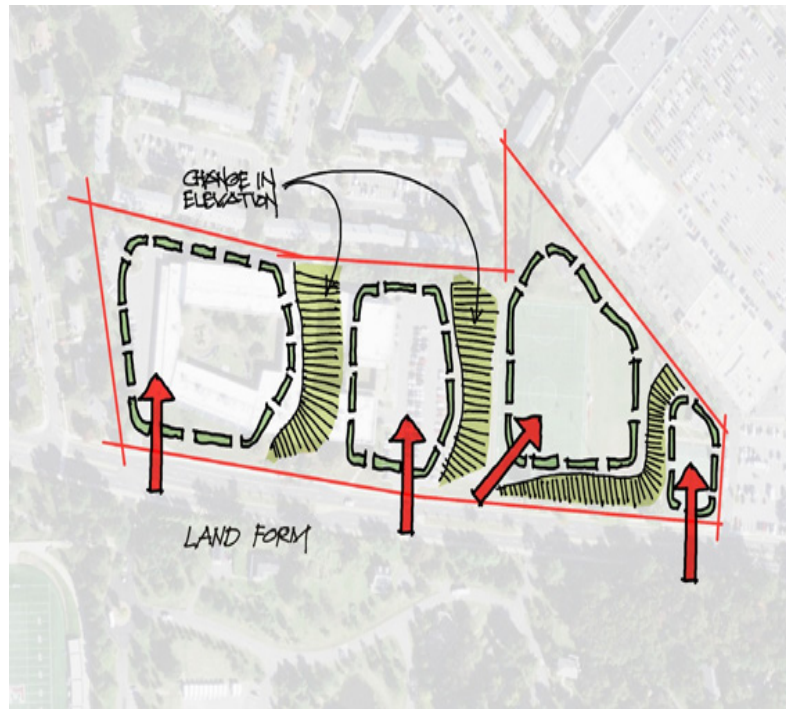
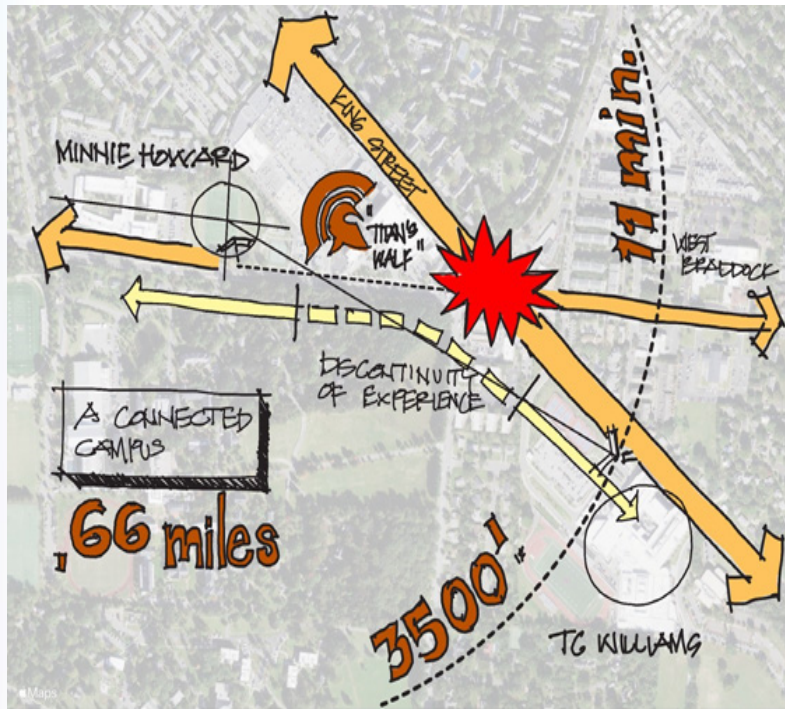
CTE 2: Fabrication Lab

3. Digital Design Studio	0	3	0	0	1,000 SF	3,000 SF
5. CTE Classroom	0	3	0	0	850 SF	2,550 SF
				0		5,550 SF

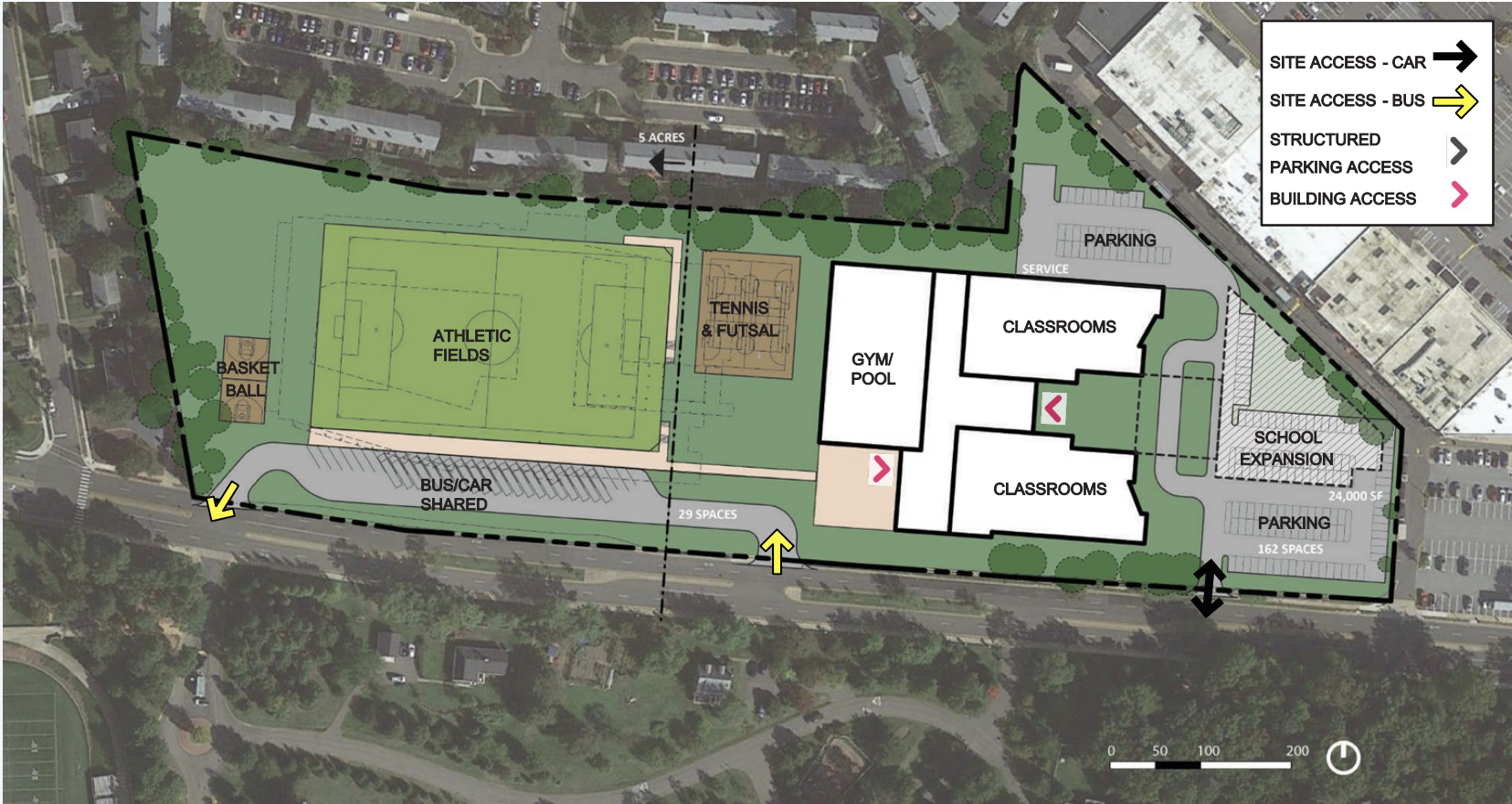
CTE 4: Governors School - Health & Medical Sciences

2. Studio/ Lab	0	3	0	0	1,400 SF	4,200 SF
3. Project / Material Storage	0	1	0	0	200 SF	200 SF
				0		4,400 SF
				0		17,950 SF
DIVISION TOTAL: 18				0		17,950 SF

Minnie Howard Site - Orientation



Site Plan - The Hand Concept

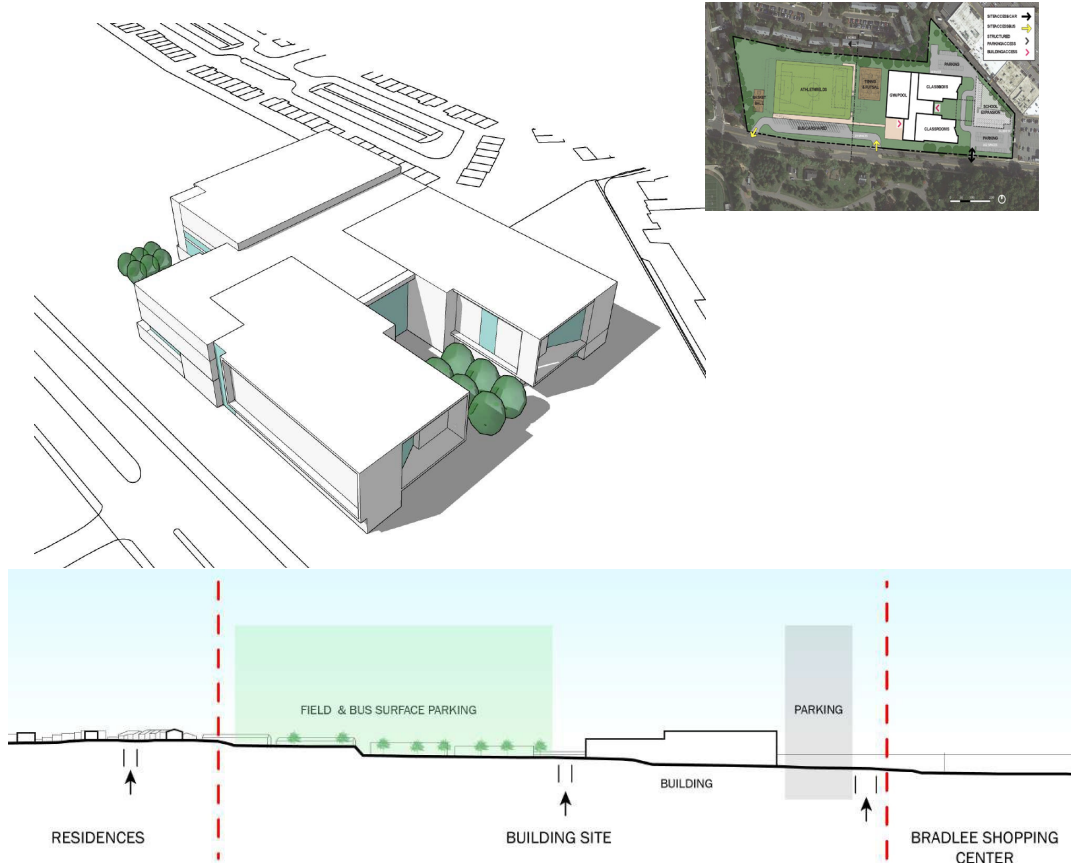


The Hand Concept

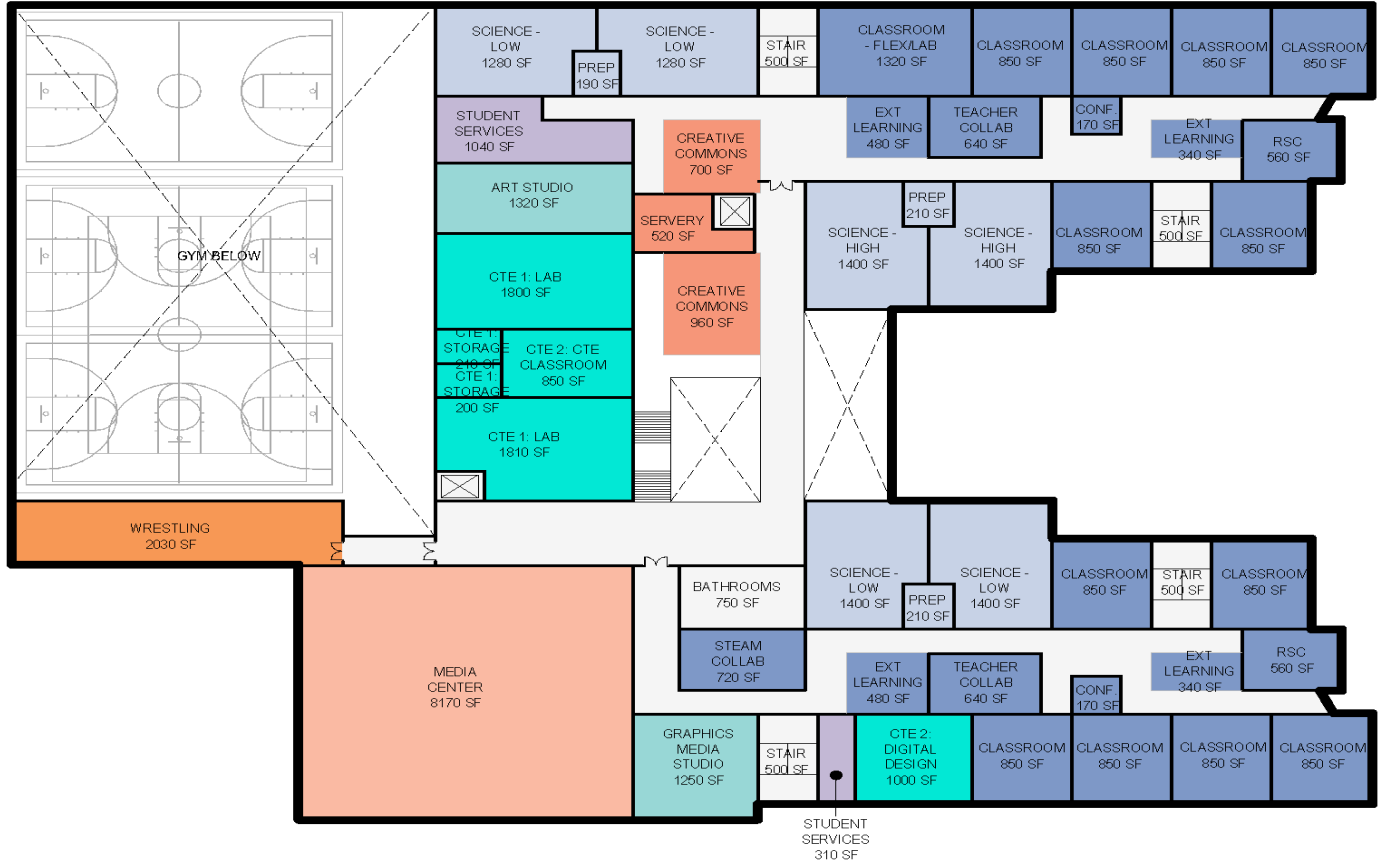


The Hand Concept

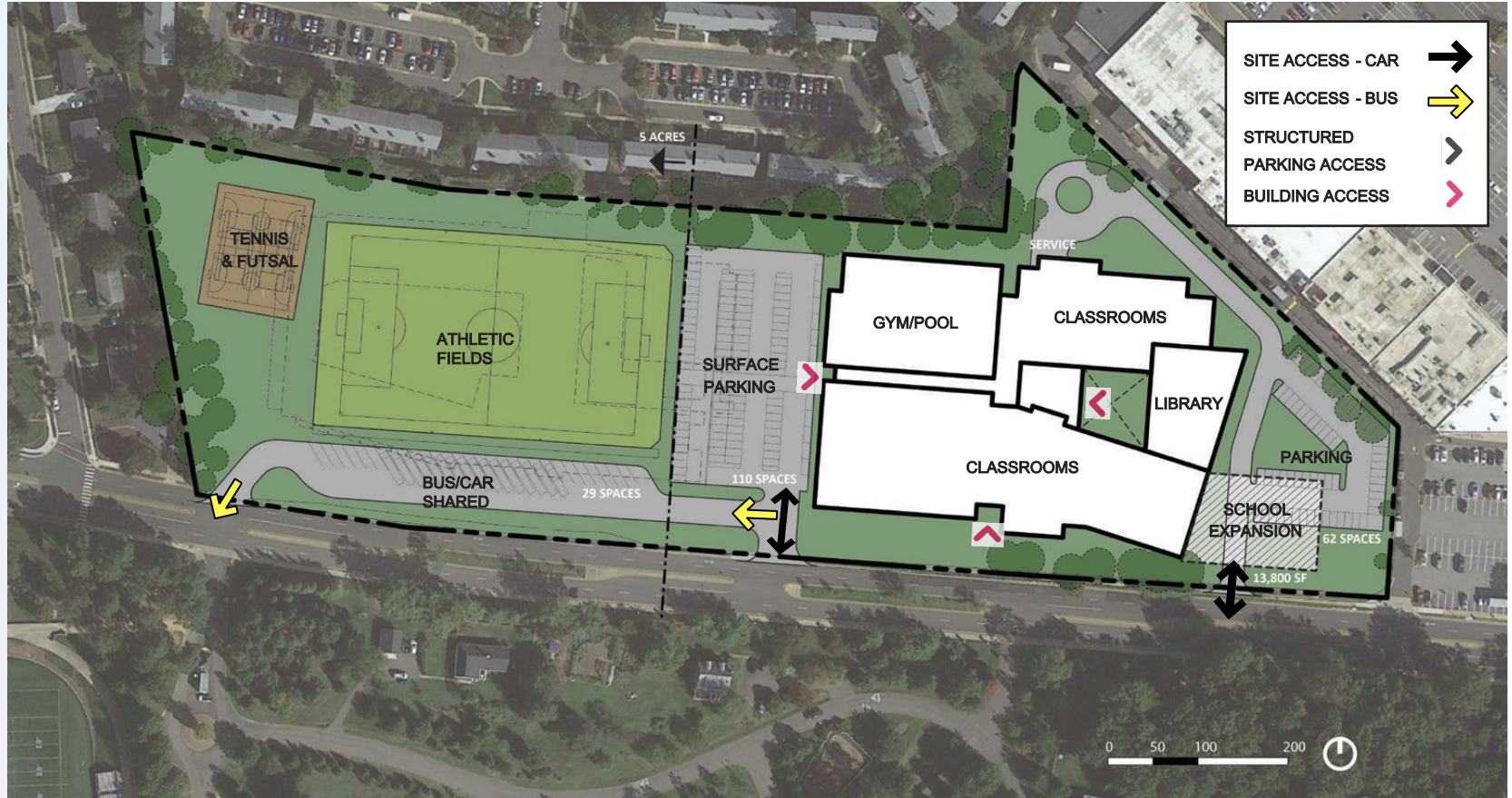
- Learning neighborhoods are oriented with **classrooms facing north and south.**
- Physical Education spaces are organized to provide **convenient access to outdoor fields.**
- The heart of the school is the **connective link between all the parts.**
- **Three-sided courtyard** open along its eastern edge.
- **Combines indoor & outdoor spaces.**



CTE Suite



Site Plan – The Crescent Concept

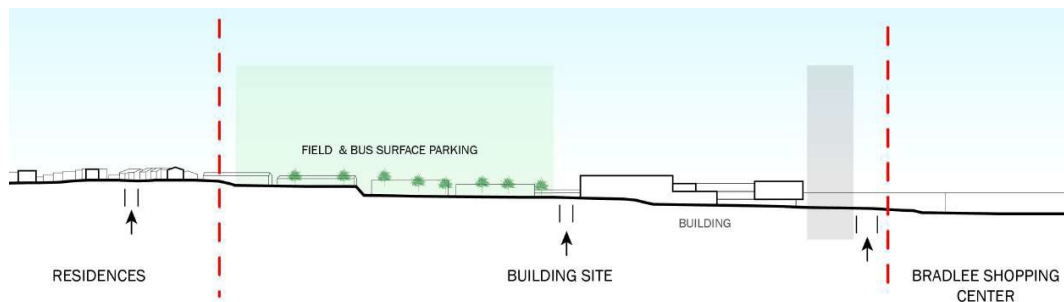
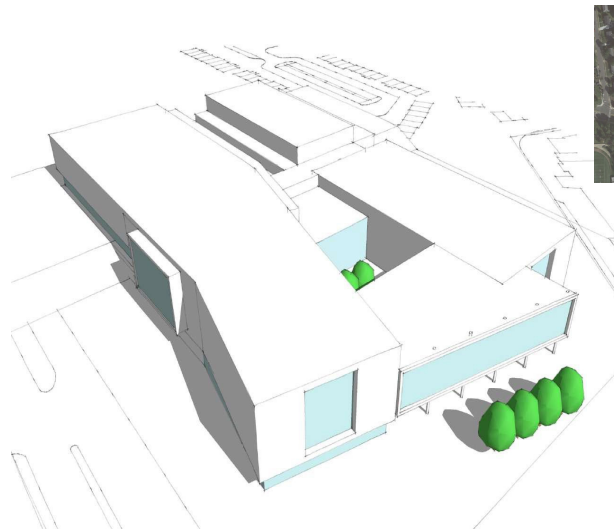


The Crescent Concept



The Crescent Concept

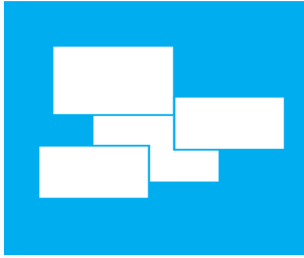
- Learning neighborhoods are organized along the **southern edge along Braddock Road.**
- **Maximizing daylight opportunities** for Learning spaces.
- **Media Center** is uniquely positioned to be a **bridge** between the learning neighborhoods.
- **Creates an outdoor space** enclosed on its four sides.



Site Plan - The Pinwheel Concept

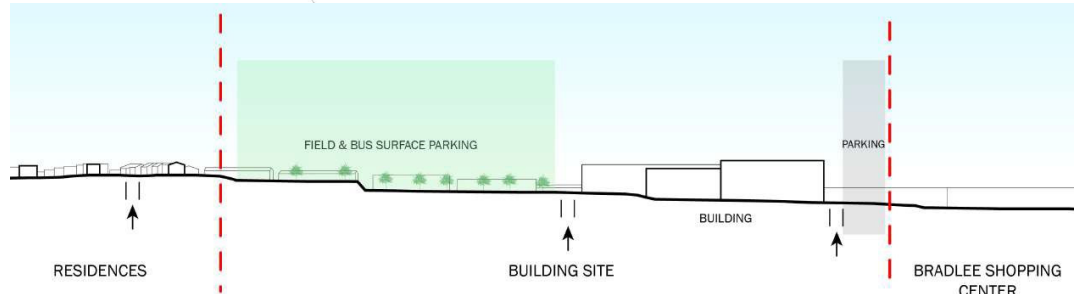
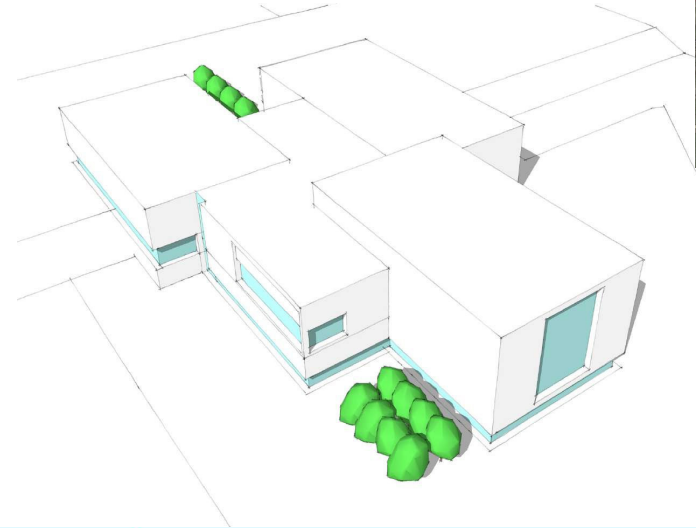


The Pinwheel Concept






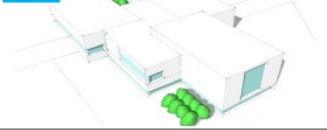


The Pinwheel Concept

- Organizes the **learning neighborhoods** and **athletic facilities** in **orbit around the heart of the school**.
- Three-sided courtyard along the western side **providing outdoor connection to the fields**.
- On grade **parking**.

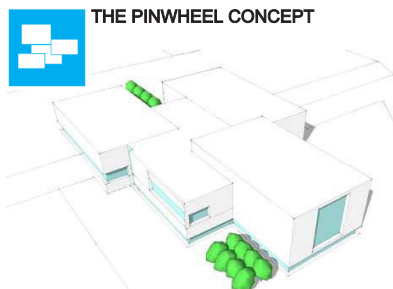
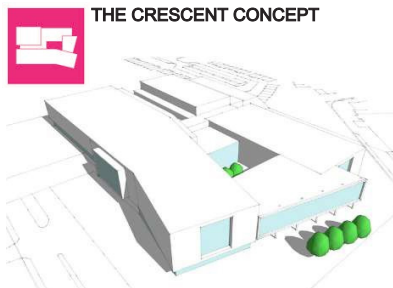
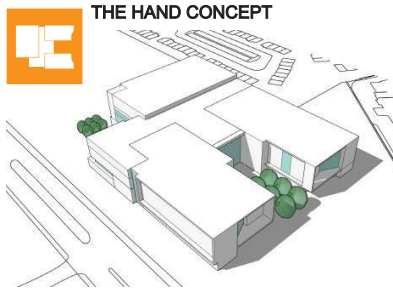


Comparison of Concepts

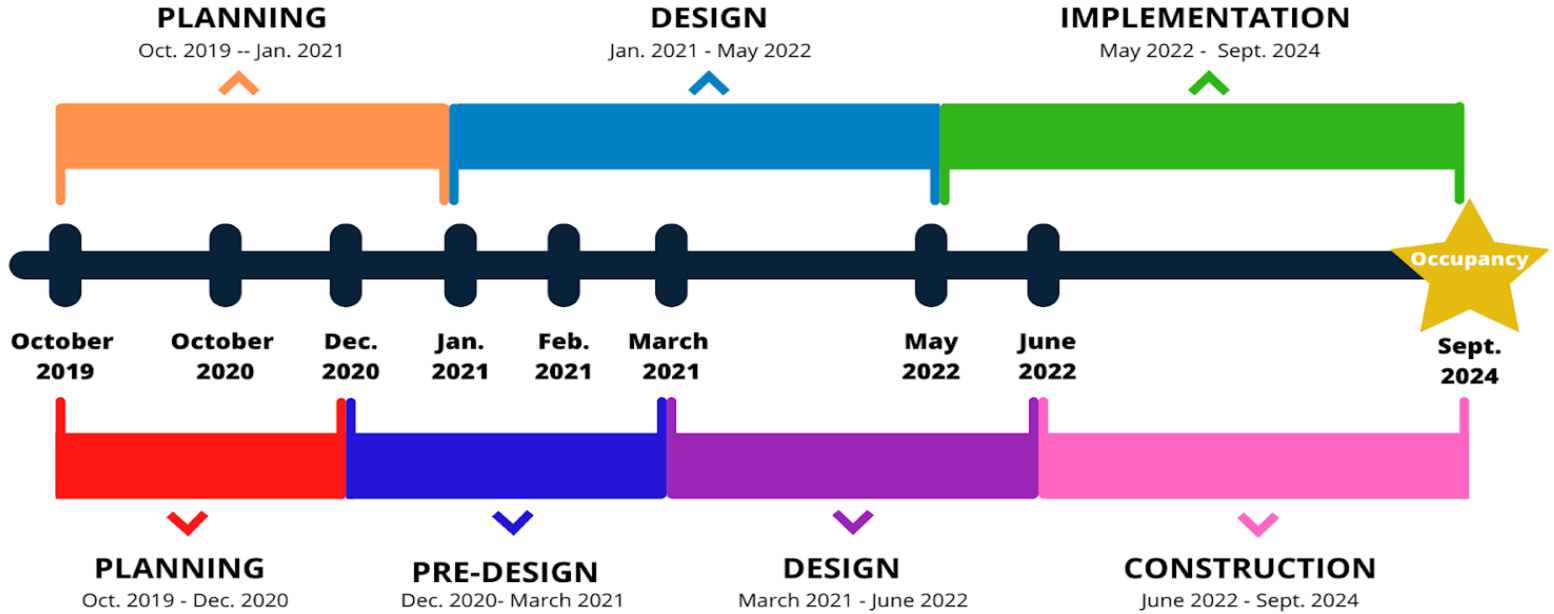
LEGEND				
ACHIEVES GOAL				
	<ul style="list-style-type: none"> ● Very well ● Somewhat ● Not Well ○ Pending 			
	Concept	HAND SCHEME	CRESCENT SCHEME	PINWHEEL SCHEME
DESIGN PATTERNS	Connected High School Network	●	●	●
	Equity and Access	●	●	●
	Heart of School/ Library- Learning Commons	●	●	●
	Community Use and Access	●	●	●
	STEAM Adjacencies	●	●	●
	Integrating the Arts	●	●	●
	Flexibility and Adaptability	●	●	●
	Interdisciplinary Communities	●	●	●
	Extened Learning Areas and Breakout Rooms	●	●	●
	Distributed Science Labs	●	●	●
	Distributed Dining Venues	●	●	●
	Centralized and Distributed Admin and Support	●	●	●
	Shared Teacher Office and Collaboration Areas	●	●	●
	Indoor/ Outdoor Connections	●	●	●
CRITERIA	Program Accommodation	●	●	●
	Outdoor Athletic Program	●	●	●
	Future Expansion/Flexibility	●	●	●
	Sustainability (Rooftop PV Production)	●	●	●
	Walk/Bike/Bus/Drive	●	●	●
	Parking	●	●	●
	Building Life Cycle	○	○	○
	Constructability	○	○	○

Concepts Comparison Matrix & Poll

The three concepts are to be **evaluated** against the Design Patterns and Criteria in meetings and workshops with ACPS and community stakeholders.



Project Timeline



Concept Phase Engagement

Date	Activity
Mar 8	Superintendent’s Advisory Team Kickoff
Mar 8	Design Kickoff Community Webinar
Mar 16	Community Meeting - 6:00 to 7:00 p.m.
Mar 16	Superintendent’s Advisory Team Meeting - 7:00 to 8:00 p.m.
<i>Mar 18</i>	<i>School Board Meeting: Presentation of Concepts</i>
Mar 25	Community Meeting – 6:00 to 7:00 p.m. -
Mar 25	Superintendent’s Advisory Team Meeting - 7:00 to 8:00 p.m.
<i>Apr 8</i>	<i>School Board Meeting: Vote on Concept</i>
<i>Apr 12*</i>	Superintendent’s Advisory Team Meeting

* Tentative dates will need to be confirmed

Questions & Feedback

Community Meeting – March 25, 2021 – 6:00 to 7:00 p.m.

<https://zoom.us/j/91611601588?pwd=WHRnWjEwSUIRTkRIMUIRdHFvTy9zUT09>

Contact us:

- **Email:** hsproject@acps.k12.va.us

Updates:

- **Online:** www.acps.k12.va.us/hsproject



Thank you



Superintendent
Dr. Gregory C. Hutchings, Jr.

School Board
Meagan L. Alderton, Chair
Veronica Nolan, Vice Chair

Cindy Anderson
Ramee A. Gentry
Jacinta Greene
Margaret Lorber

Michelle Rief
Christopher A. Suarez
Heather Thornton