

# The High School Project



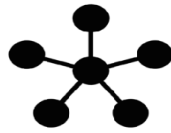
## Community Open House Poster Boards

School Board Work Session  
June 10, 2019



**EVERY STUDENT SUCCEEDS**

# PROJECT OBJECTIVES



Community  
Connected

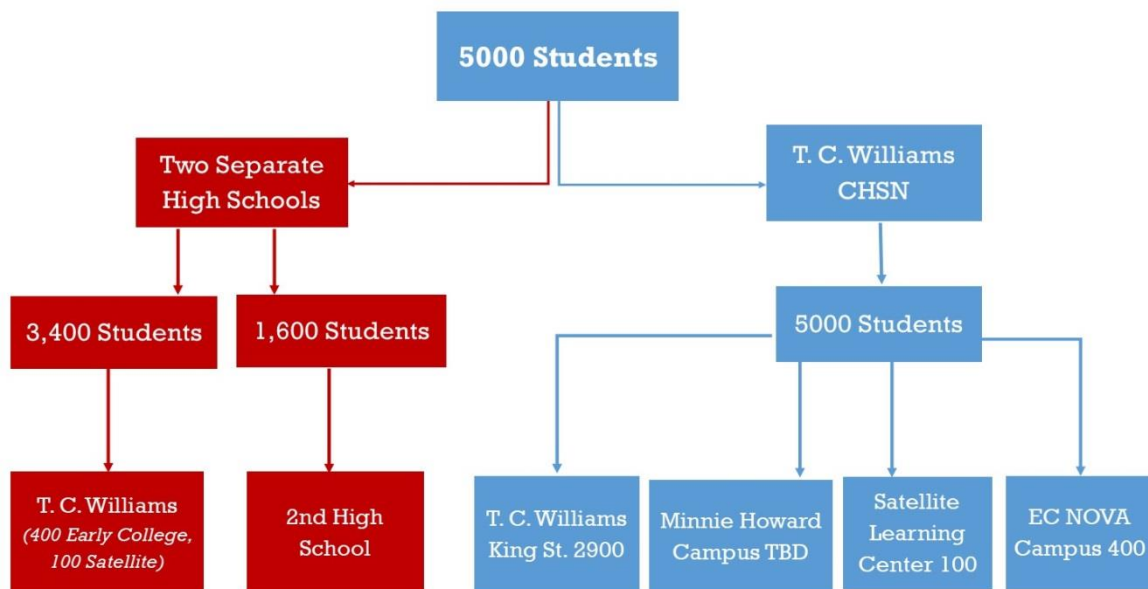


Diversity  
as Strength



Experiential  
Learning

- **Honor the commitment by ACPS to create opportunities for our diverse body of students**
- **Meet the criteria established by the *Virginia Profile of a Graduate***
- **Resolve our high school's capacity issues**

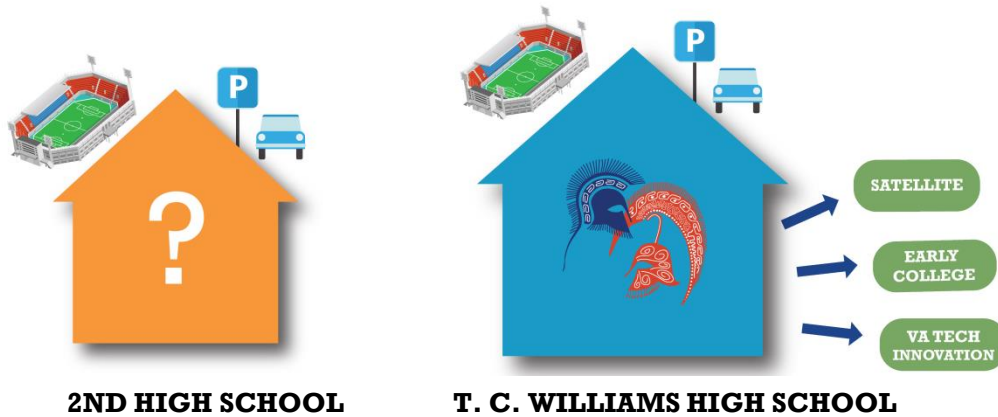


City of Alexandria public schools needs to build capacity to teach an additional 1,600 students for a total of 5,000 students

The goal is to deliver expanded high school programming and space for occupancy beginning in 2023 and completed by 2025

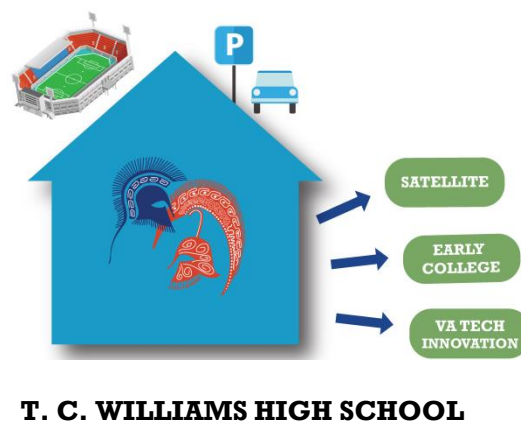
# TWO MODELS

## TWO COMPREHENSIVE HIGH SCHOOLS



- Distinct identities
- Full range of academic, extracurricular and community services
- Separate programs and services
- Two separate Alexandria locations

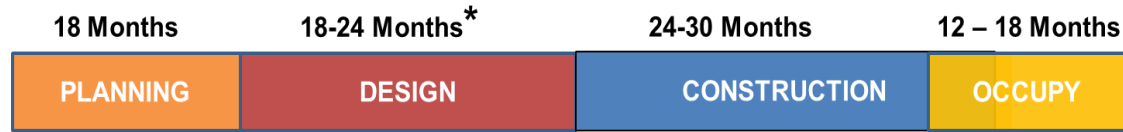
## ONE HIGH SCHOOL MODEL (CONNECTED HIGH SCHOOL NETWORK)



- King Street Home Campus, Redeveloped Minnie Howard Campus and Multiple Satellite Campuses
- Co-located Programs and/or Specialty Programs at Satellite Campuses

# PROJECT PROCESS

## PROJECT TIMELINE



Research,  
Concept,  
Project Approach



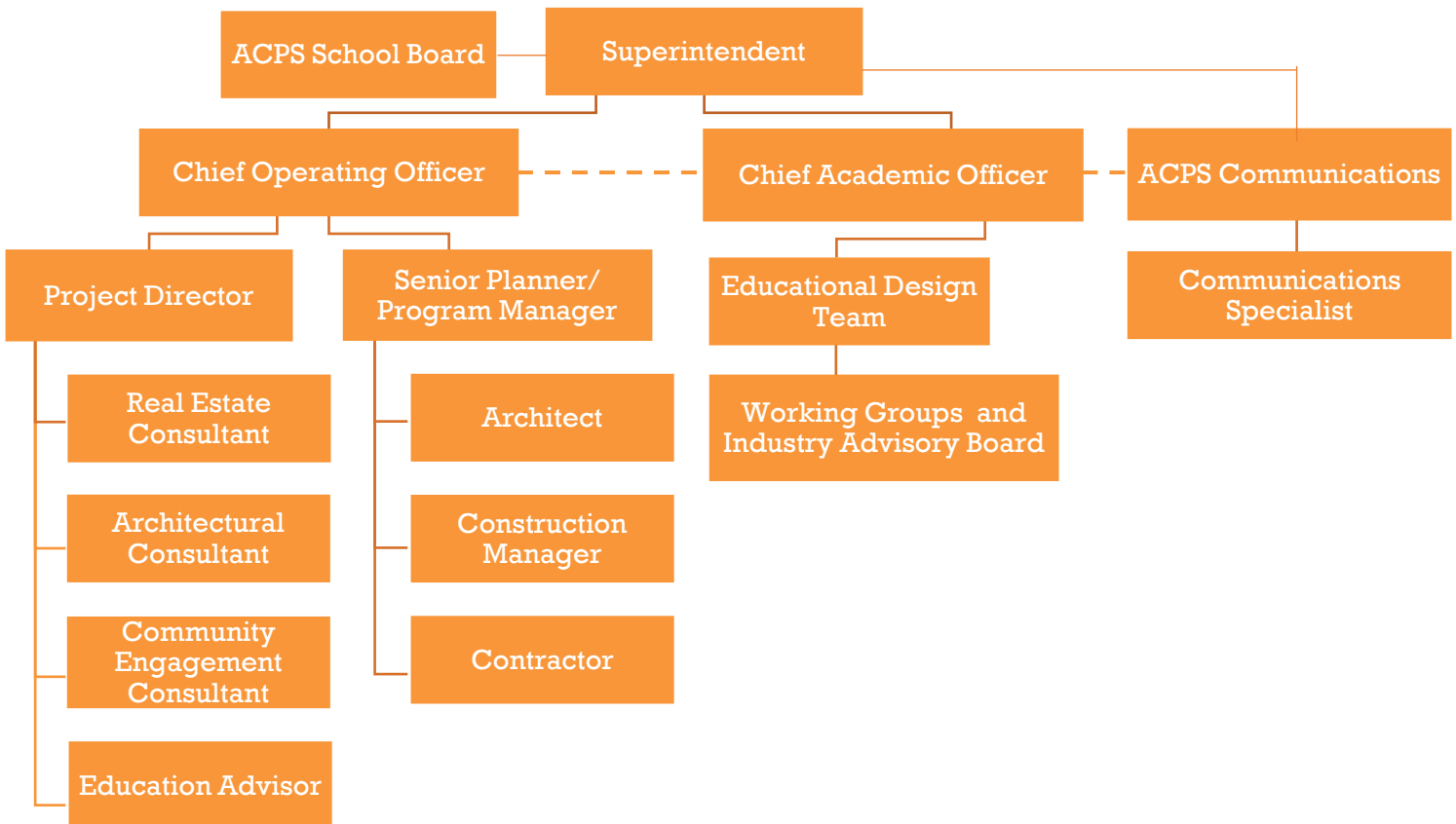
Finalize  
assumptions,  
educational  
programming  
direction, site  
investigation

\*Includes DSUP process

Timelines are not exact. They may vary based upon the ultimate solution for high school expansion.

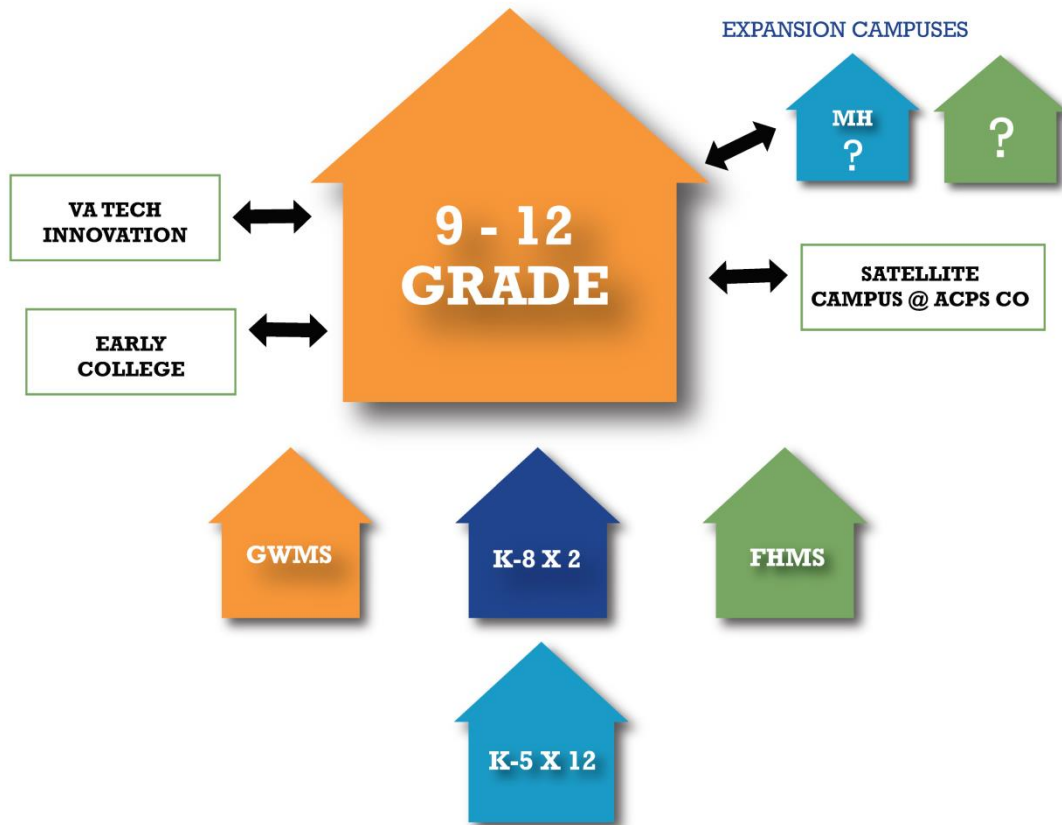
The goal is to deliver expanded high school programming and space for occupancy **beginning** in 2023 and completed by 2025.

## PROJECT ORGANIZATIONAL CHART



# EDUCATIONAL PROGRAMMING

## ONE HIGH SCHOOL MODEL (T.C. WILLIAMS CONNECTED HIGH SCHOOL NETWORK)



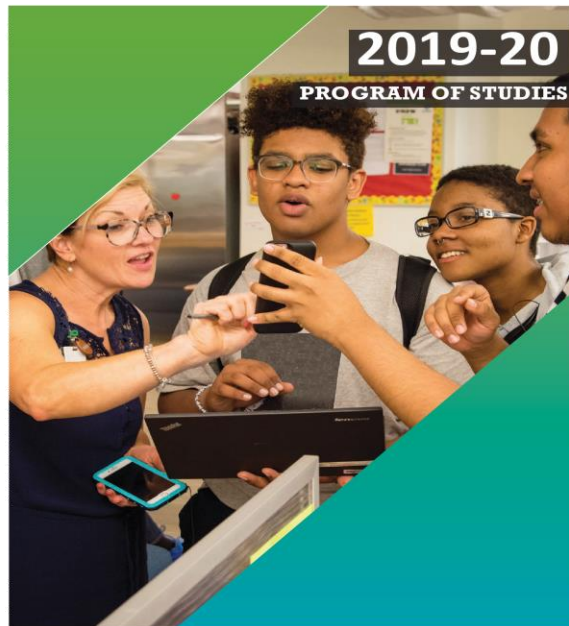
- Grades 9-12 will be integrated – **NO** 9th Grade only campus
- Educational Design Team will determine what programming will be offered at each campus
- Total student body will be increased allowing for course options to be adjusted based on future student needs
- There will be one set of athletic teams

# EDUCATIONAL PROGRAMMING

## BACKGROUND

### **DEFINITION:**

The courses, athletics and extracurricular activities that make up a high school student experience and meet graduation requirements

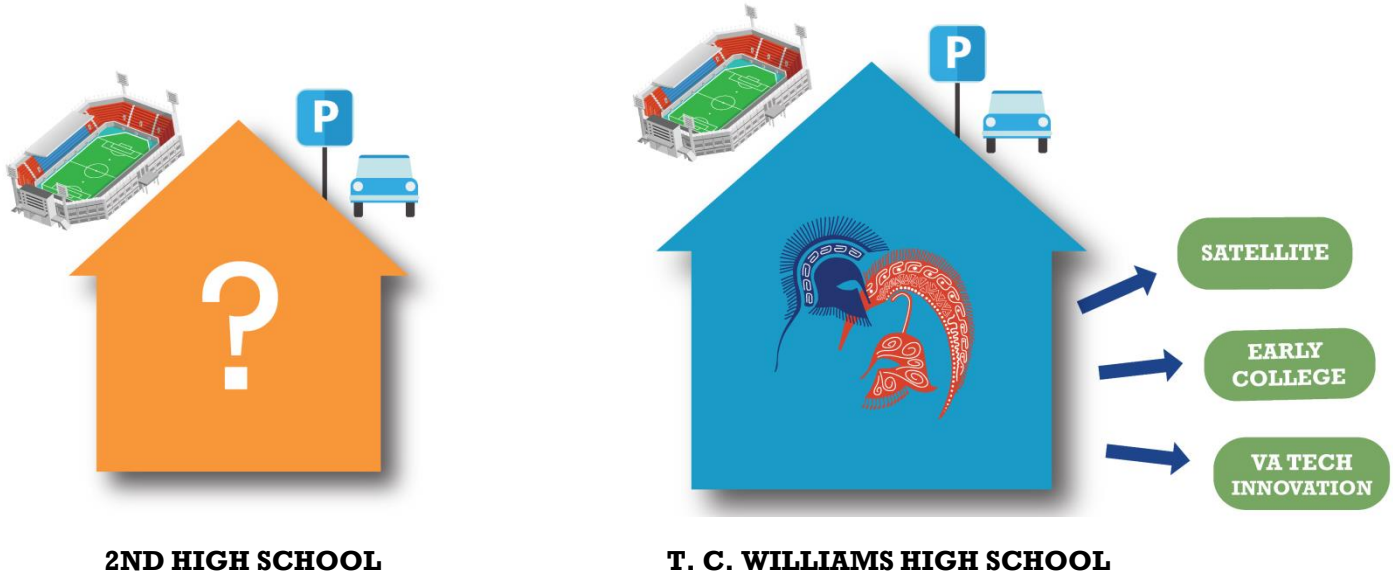


### **CURRENT PRACTICE:**

- T. C. Williams offers over 400 courses spread primarily between two campuses
- T. C. Williams offers 16 certification programs
- 9th grade students are at a separate campus, but over 230 9th graders travel to King Street Campus for courses every day
- T. C. Williams has one set of athletic teams

# EDUCATIONAL PROGRAMMING

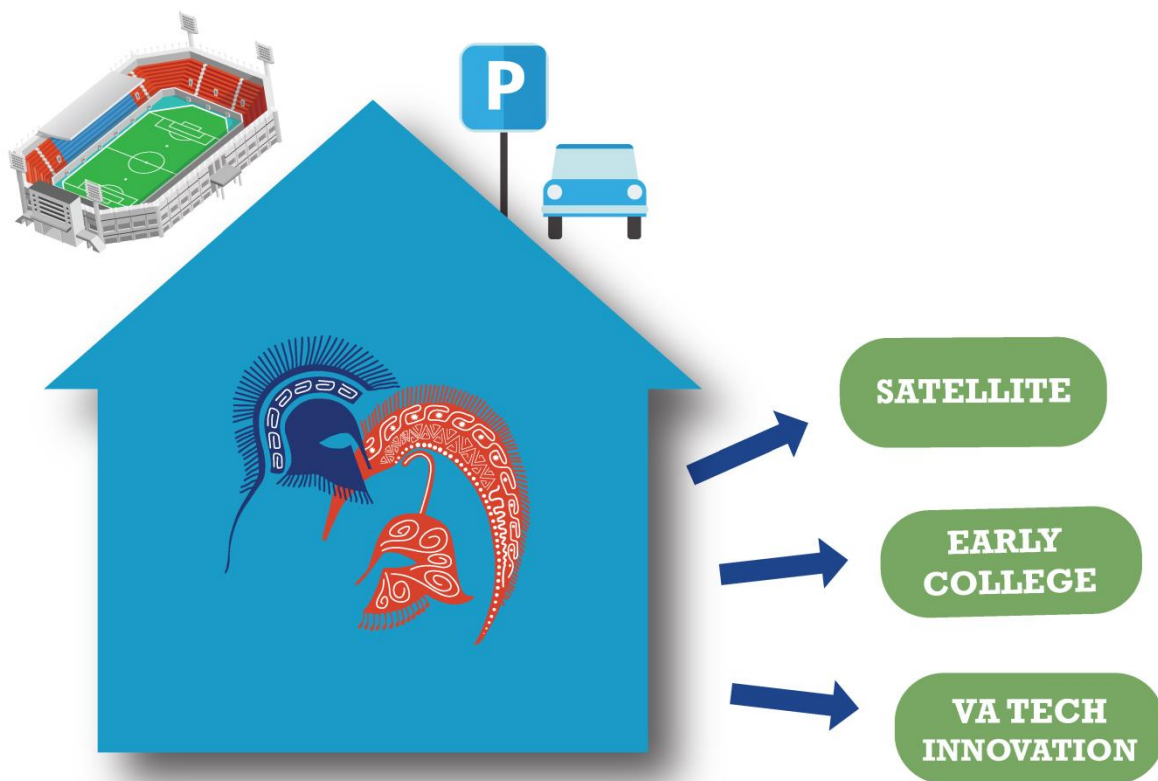
## TWO COMPREHENSIVE HIGH SCHOOLS MODEL



- Grades will be integrated with 9<sup>th</sup> - 12<sup>th</sup> grades at each school
- Educational Design Team will determine what programming would be offered at each school
- Total student body served at each school will be reduced therefore, course options will likely be reduced
- There will be two sets of athletic teams

# ASSIGNING STUDENTS TO SCHOOLS

## ONE HIGH SCHOOL MODEL (T.C. WILLIAMS CONNECTED HIGH SCHOOL NETWORK)



### T. C. WILLIAMS HIGH SCHOOL

- One public high school for the City of Alexandria
- All students will be assigned to T. C. Williams High School
- School attendance will be based on class schedule and course subject matter





# ASSIGNING STUDENTS TO SCHOOLS

## BACKGROUND

### **DEFINITION:**

The process required for assigning students to each school

### **CURRENT PRACTICE:**

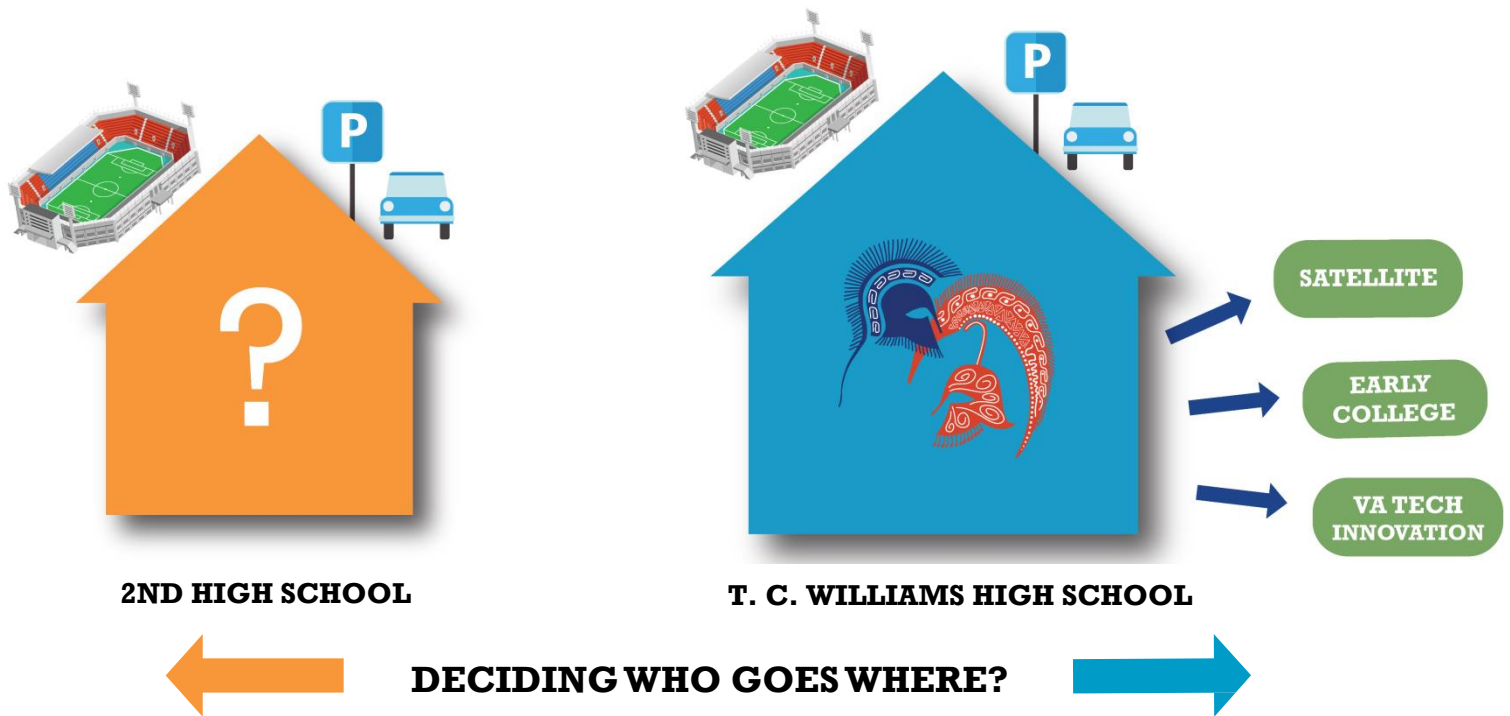
ACPS assigns students to schools according to their residential zone. Since City of Alexandria has one public high school, T. C. Williams, All students are assigned to T. C. Williams and attend school based on grade level, 9th grades attend the Minnie Howard Campus and grades 10 through 12 attend the King Street Campus.

\* Some students attend programs at other locations such as the Satellite (online) Campus and Chance for Change.



# ASSIGNING STUDENTS TO SCHOOLS

## TWO COMPREHENSIVE HIGH SCHOOLS MODEL

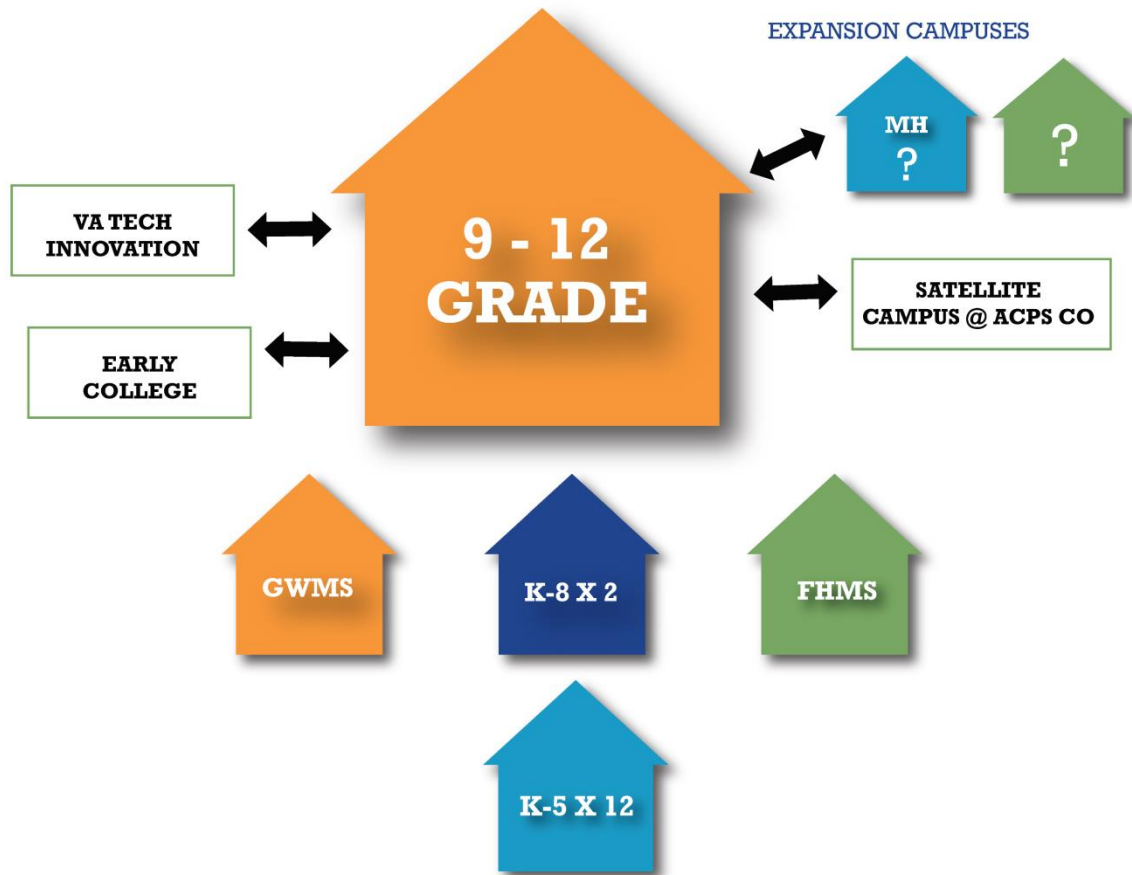


The School Board will determine an assignment process

- Neighborhood Boundaries?
- Lottery?
- School Choice?
- Application Process?

# TRANSPORTATION AND LOGISTICS

## ONE HIGH SCHOOL MODEL (T.C. WILLIAMS CONNECTED HIGH SCHOOL NETWORK)



- Requires review of options and costs for expanded fleet of buses and different school schedules
- May require review of exceptions
- May require implementation of a “shuttle” system

# TRANSPORTATION AND LOGISTICS

## BACKGROUND

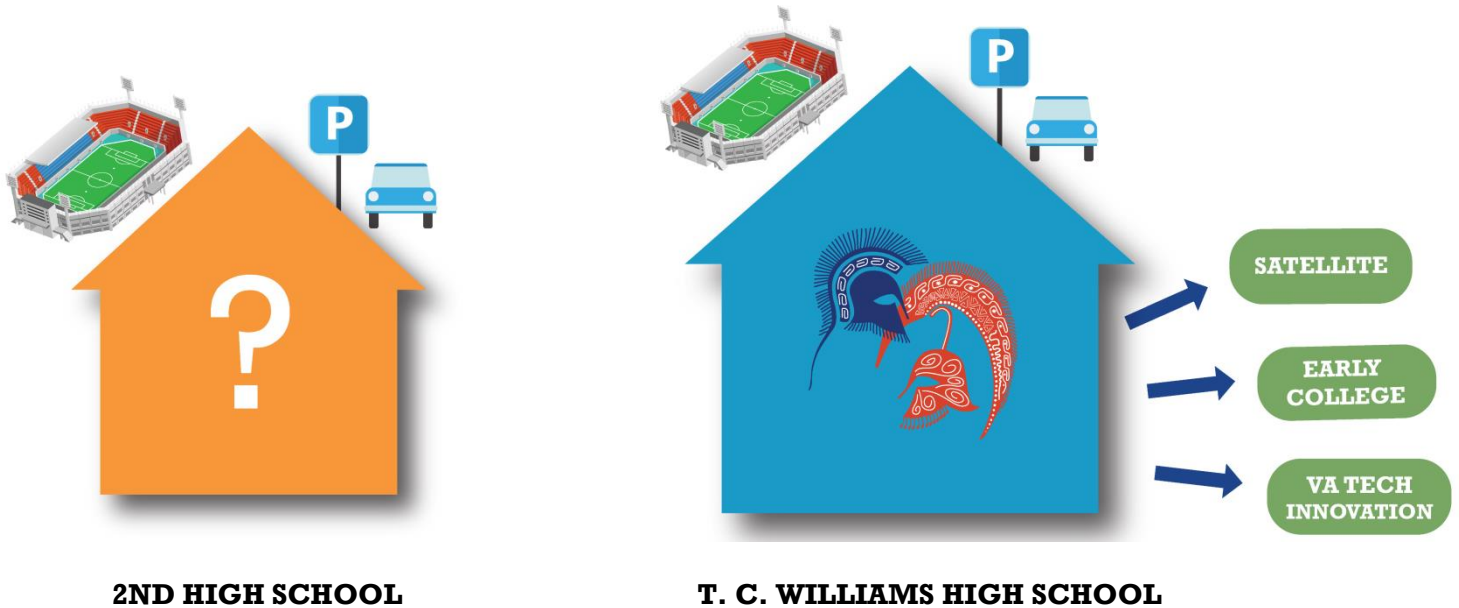
### **DEFINITION:**

Consistent with ACPS policy, students will continue to be afforded the privilege of riding a school bus when their residence address is within the designated eligible area. Any new high school model chosen will require a review and enhancement of services to accommodate the needs of expanded programs and flexibility built into curriculum choices.



# TRANSPORTATION AND LOGISTICS

## TWO COMPREHENSIVE HIGH SCHOOLS MODEL



- Review of options and costs for expanded fleet of buses and different school schedules
- Neighborhood routes will change based on school assignments

## ONE HIGH SCHOOL MODEL (T.C. WILLIAMS CONNECTED HIGH SCHOOL NETWORK)

### **KING STREET CAMPUS**

T. C. Williams King Street Campus would serve as the main campus

### **MINNIE HOWARD CAMPUS EXISTING SITE**

A new expansion campus would replace the current Minnie Howard building



- Need to determine what athletic spaces are needed on each campus
- No acreage requirement for much of the expanded spaces
- Additional campuses may be necessary
- Smaller buildings provide ACPS with flexible space options and desirable learning environment for the future
- Available City of Alexandria sites will be evaluated

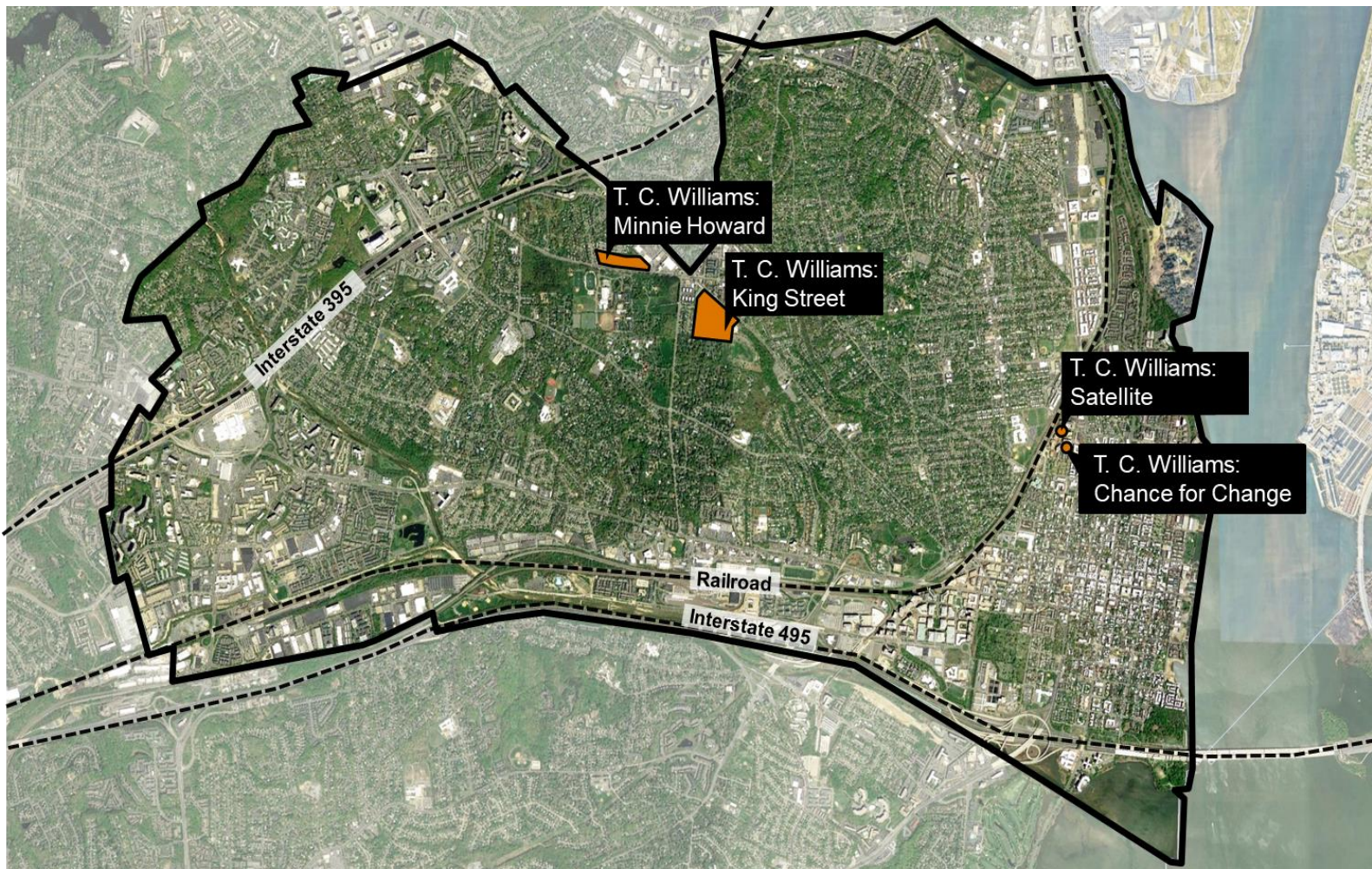
## BACKGROUND

### **DEFINITION:**

The Current T. C. Williams High School Campuses

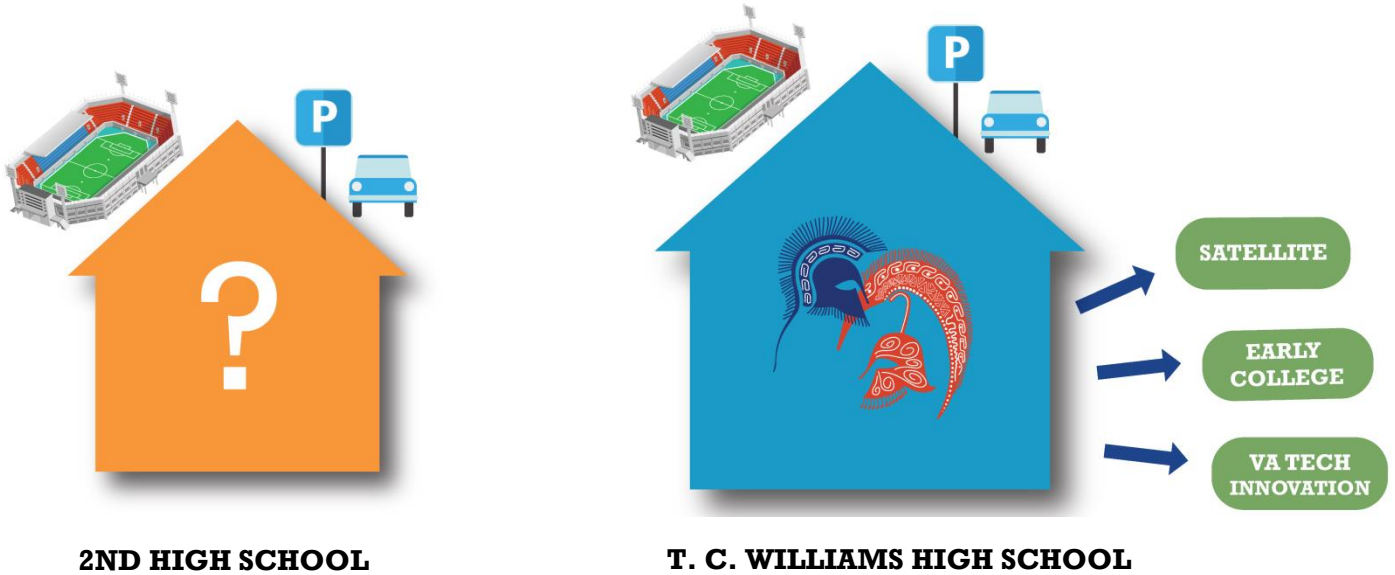
### **CURRENT CONDITION:**

ACPS currently has 4 high school locations, with the two main locations at the T.C. Williams: King Street Campus (approx. 20 acres) and T. C. Williams: Minnie Howard Campus (approx. 12 acres)



# LOCATIONS

## TWO COMPREHENSIVE HIGH SCHOOLS MODEL

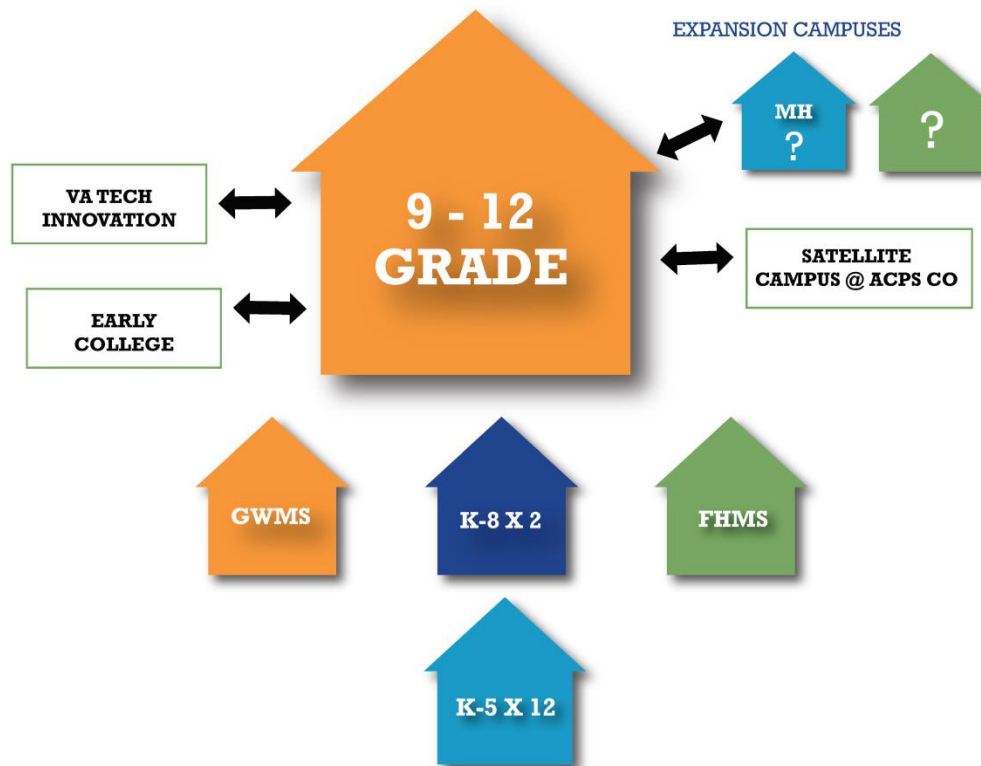


- T.C. Williams Minnie Howard Campus will not be used for the second comprehensive high school
- The second comprehensive high school will need its own set of athletic facilities
- The second comprehensive high school will require 20 - 30 acres of land and approximately 300,000 square feet of building space
- Total final requirements will be determined by programming
- Available City of Alexandria sites will be evaluated



# BUDGET AND COSTS

## ONE HIGH SCHOOL MODEL (T.C. WILLIAMS CONNECTED HIGH SCHOOL NETWORK)



The likely relationship of one high school (Connected High School Network) to the budget and current baseline costs is as follows:

SITE: LESS TO EQUAL  
SOFT COSTS: EQUAL  
HARD COSTS: EQUAL

- May require land acquisition depending on programming requirements. Much of the expansion space can be developed on Minnie Howard Campus Site
- May require increased transportation costs depending upon scheduling of classes
- ACPS will maximize technology to offset transportation costs



# BUDGET AND COSTS

## BACKGROUND

### DEFINITIONS:

**OPERATING COSTS:** staff salaries and costs to operate buildings in ACPS combined-funds budget

**CAPITAL COSTS:** Planning, land acquisition, design and construction costs associated with The High School Project in ACPS Capital Improvement Program (CIP) budget

ACPS anticipates approval for the below CIP FY 2019 to FY 2021 funding for The High School Project:

SOFT COSTS: \$20 M  
 HARD COSTS: \$103 M  
 TOTAL: \$123 M

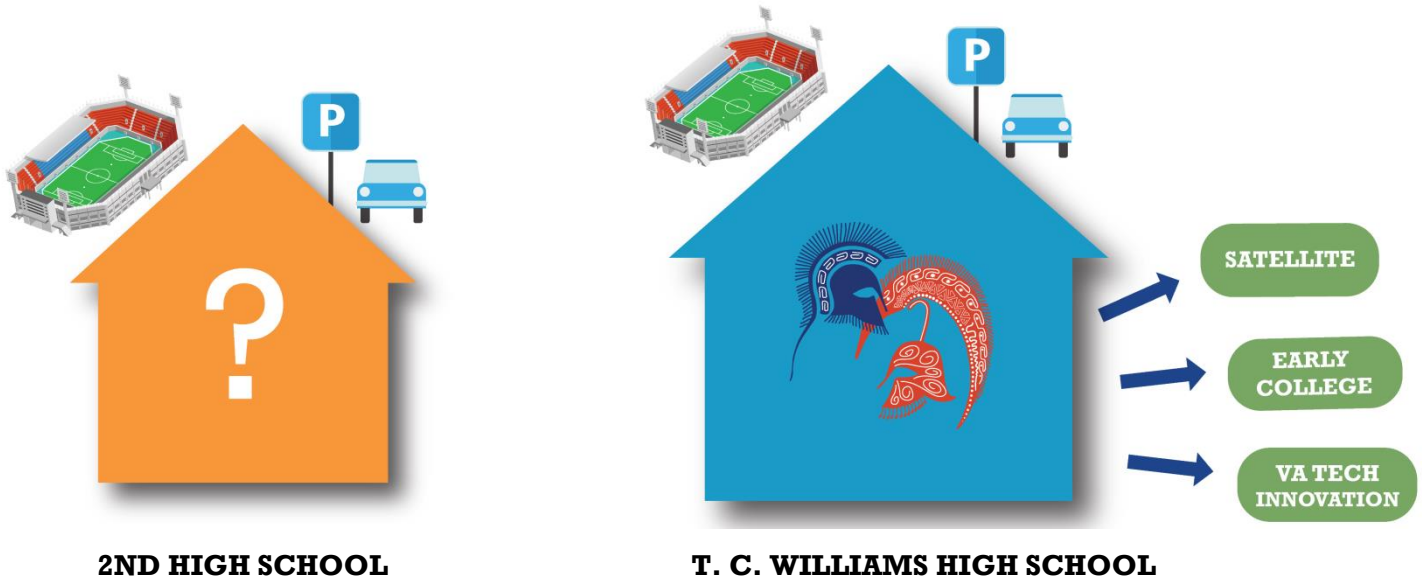
**Anticipated capital costs for different construction types will be determined and compared for each high school model. Cost will likely increase from FY 2019 – 2021 CIP budget.**

## ANTICIPATED OPERATING COSTS FOR DIFFERENT HIGH SCHOOL MODELS

Model	Staffing	Maintenance	Food Service	Transportation	Utilities
One High School (Connected High School Network)	=	-	+	-	=
Additional Comprehensive High School	=	+	-	+	=



## TWO COMPREHENSIVE HIGH SCHOOLS MODEL



- Will require significant land acquisition for second high school site
- Large buildings tend to use more utilities and be less flexible and sustainable
- The likely relationship of a second high school to the budget and current baseline costs is as follows:

SITE: LESS TO EQUAL  
SOFT COSTS: EQUAL  
HARD COSTS: EQUAL