



Policy Revisions

Special Called
School Board Meeting
August 25, 2022





Purpose

Info/Action

- **Board approval of revisions to Policy IKC – Grading**
- **Superintendent approval of revisions to Regulation IKC – Regulations Governing the Grading Policy**



Policies and Regulations

- Policy is a basic statement of the intent of the School Board which creates rights and responsibilities for the conduct of the school division's business.
- Regulation is the manner or method of implementation of policy by the Superintendent and staff, subject to change as conditions and/or circumstances may dictate.

Reference: Policy BFC - Policy Adoption

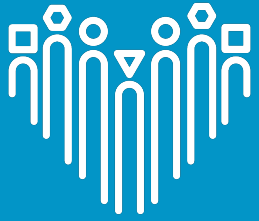


Policy Proposed for Revision

Grading Policy Revisions

- IKC and IKC-R Student Placement
 - Staff have been working on this for several years
 - Proposals are mid-process changes
 - Further work this year to complete the process

Teachers requested that the grading policy remain consistent for the year

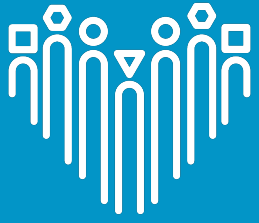


Draft Revisions

All Policies and Regulations

- Removed gender affirming terms
- Replaced parent with parent/guardian
- Reduced the use of ‘shall’ per VSBA model policy changes
- Added breadcrumbs to other policies
- Rewording and reformatting to improve readability
- Aligned content with VSBA model policies and the Code of Virginia

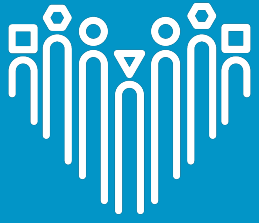
Details of revisions are in the comments on the draft policies.



Proposed Revisions

- Updated Board belief statement
- Temporary COVID provisions have been removed
- Removal of class rank
- Emphasis that grades reflect mastery of course standards and not student behaviors
- Provision that grades should reflect work completed in class
- Provision that a missed assignment is absence of data on student knowledge and skills on a topic while a zero means the student has no knowledge or skills on a topic.

Details of revisions are in the comments on the draft policies.



Proposed Revisions

- Improved alignment between IKC – Grading and other policies
 - IFA – Assessment and Evaluation
 - Use of Formative and Summative Assessments
 - IKB – Course Assignments
 - Use of assignments in calculating grades
- Requirement that schools create systematic supports for students who miss assignments
- Standardized weighting of formative (40%) and summative (60%) assessments when calculating grades

Details of revisions are in the comments on the draft policies.

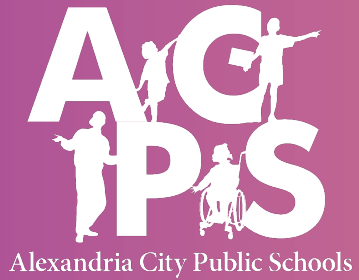


RESULTS-DRIVEN

Next Steps

Approve Policies





Questions?

Matt Smith

Policy Services Consultant
matt.smith@acps.k12.va.us



Superintendent
Dr. Gregory C. Hutchings, Jr.

School Board
Meagan L. Alderton, Chair
Jacinta Greene, Vice Chair

Willie F. Bailey, Sr.
Kelly Carmichael Booz
Abdel-Rahman Elnoubi

Christopher Harris
Tammy Ignacio

Michelle Rief
Ashley Simpson Baird