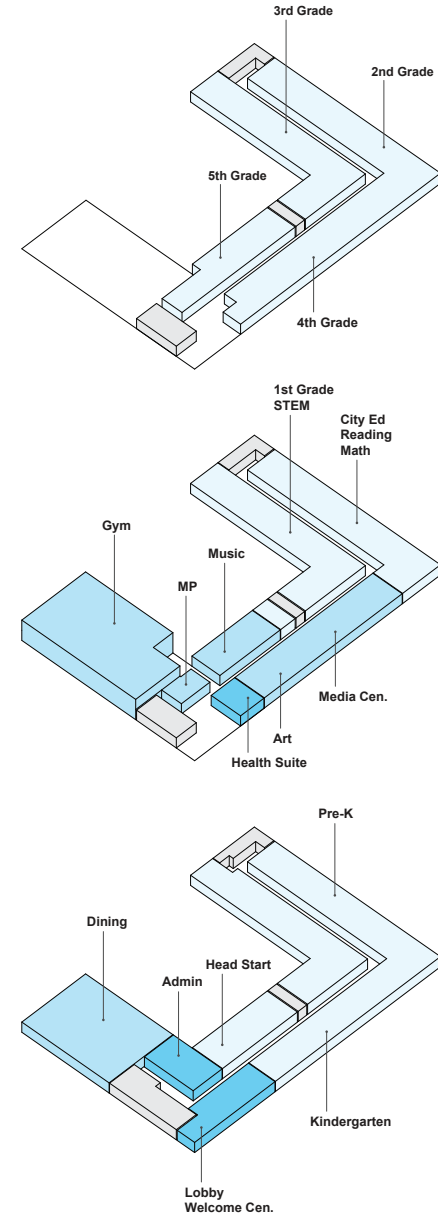
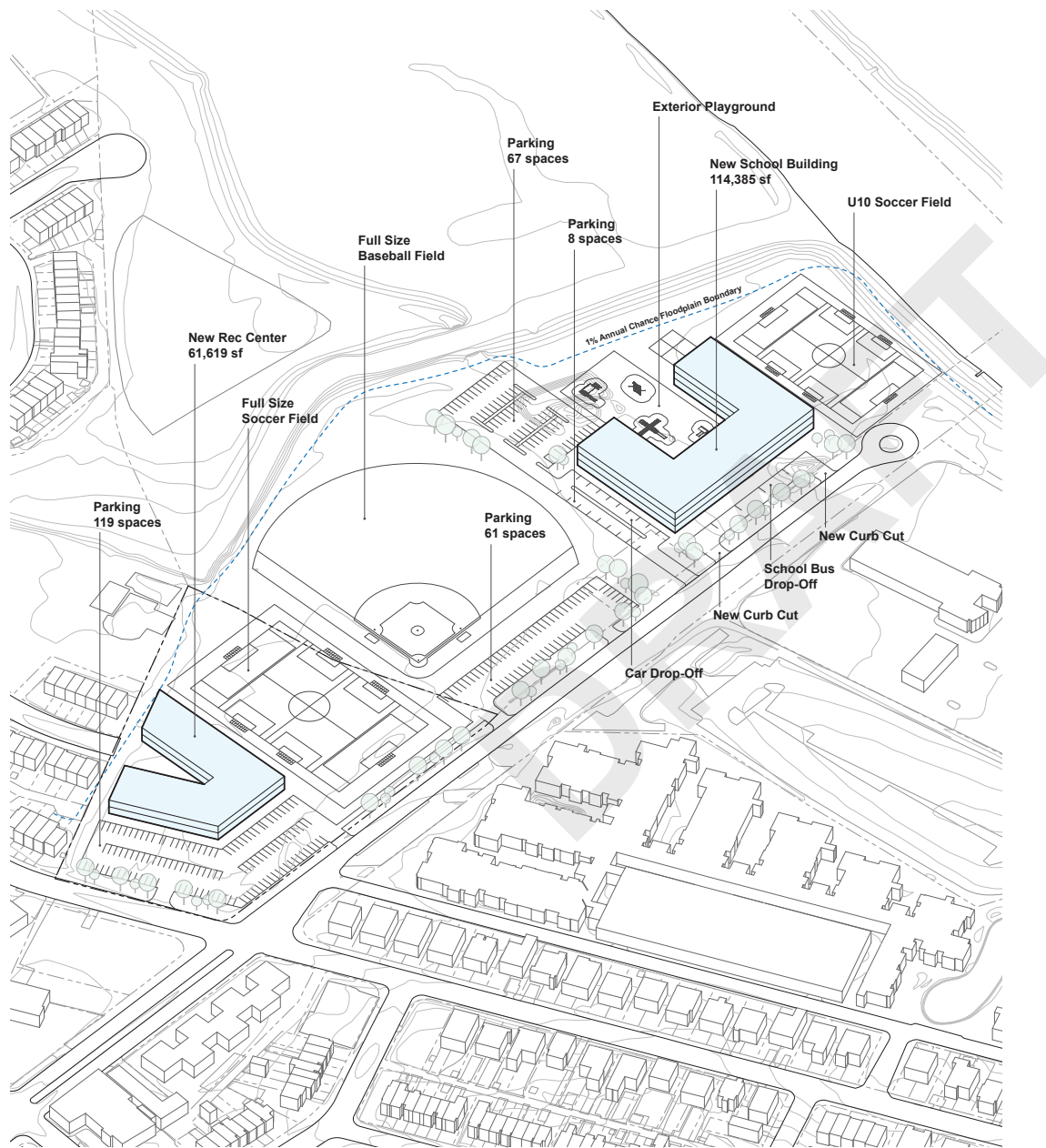
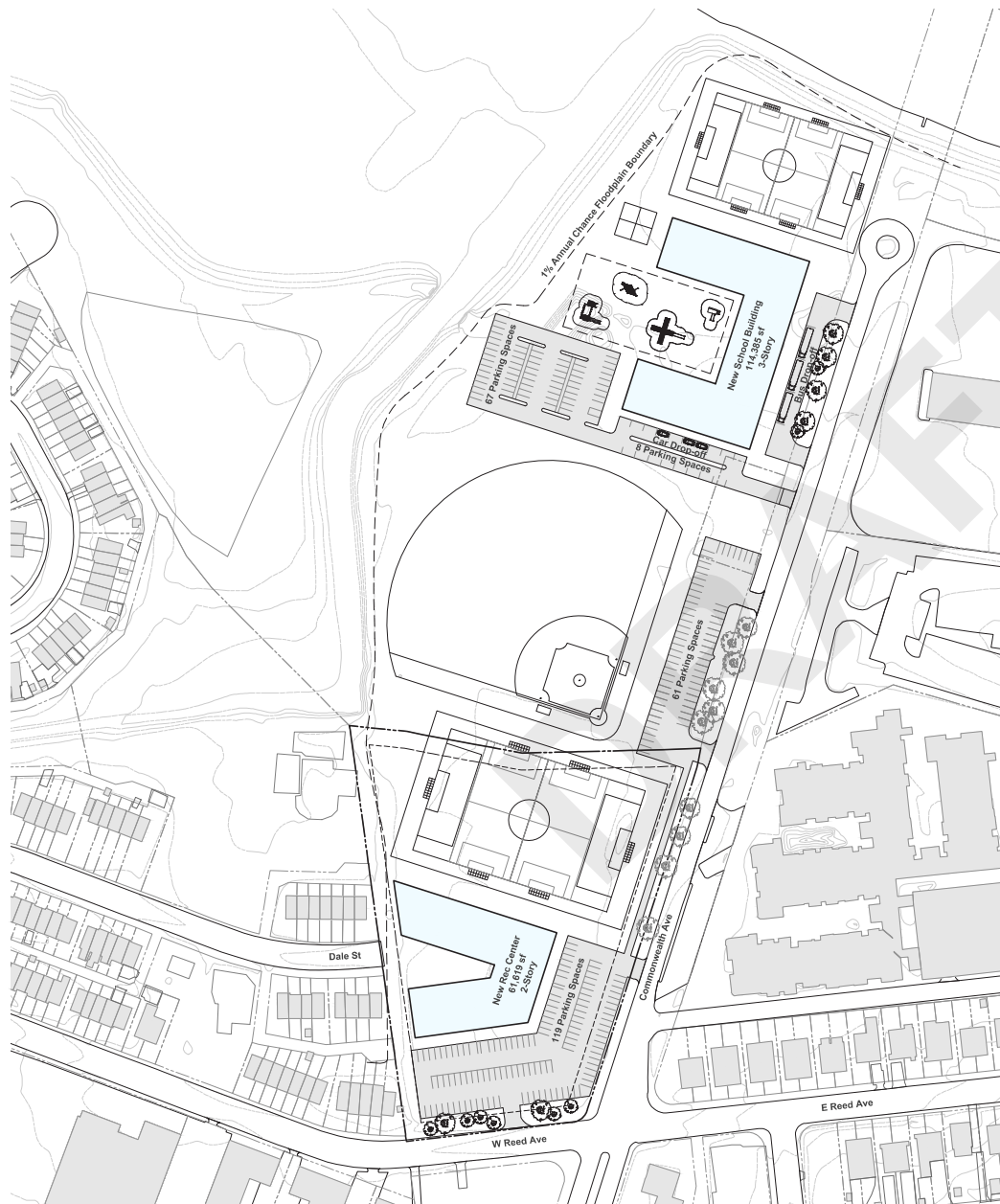


# Cora Kelly Masterplan Option 4 - New Construction and Relocation of School and Rec Center



# Cora Kelly Masterplan Option 4 - New Construction and Relocation of School and Rec Center



## Notes

Complete separation between recreation use and school use.

New Recreation Center, fields and parking.

Complete new school construction to the north.

Separate bus and car vehicular access that is long enough to prevent street congestion.

Reusing the existing curb cut.

Site design allows for safe student drop off, and direct pedestrian path from the new school building to the play fields without crossing vehicular traffic.

Shorter corridor lengths compared to existing school.

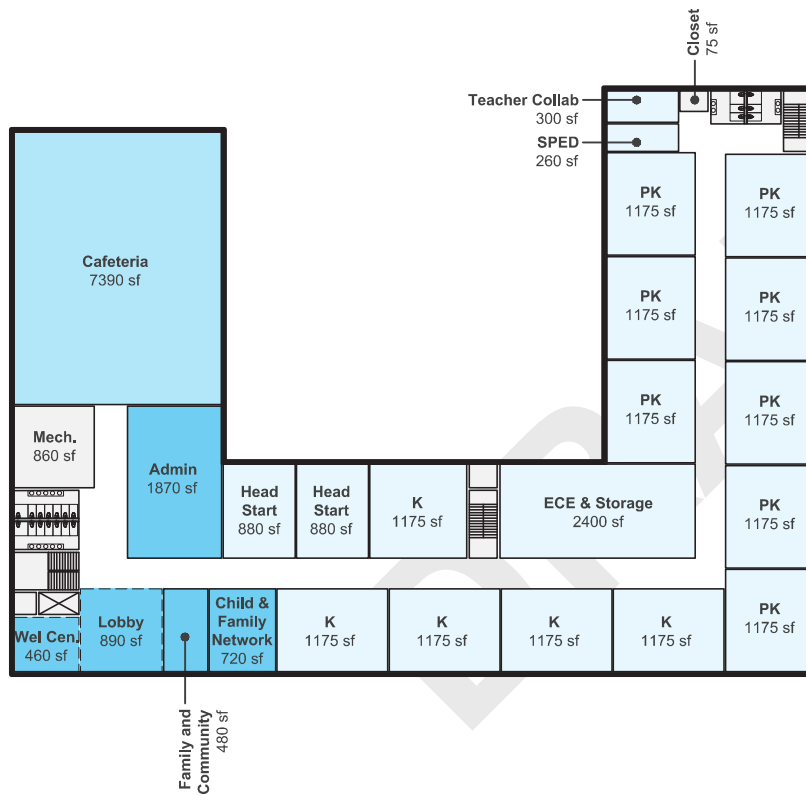
Courtyard design allows for private play and natural daylight into corridors and classrooms, and potential for passive cooling and heating

Existing Rec center limits siting of building and exterior playspace.

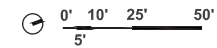
**Masterplan Floor Plan New Construction Option 4**  
**Cora Kelly 1st Floor**

**Notes**

1. Total Gross Area: **114,385 SF**
2. First Floor Gross Area: **42,042 SF**



- Core Academic/special Ed
- Visual
- Art/music/science
- Media Center/library
- Physical Education
- Student Dining And Food Services
- Administration
- Maintenance And Custodial Services
- Building Services And Restrooms



**Masterplan Floor Plan New Construction Option 4**  
**Cora Kelly 2nd Floor**

**Notes**

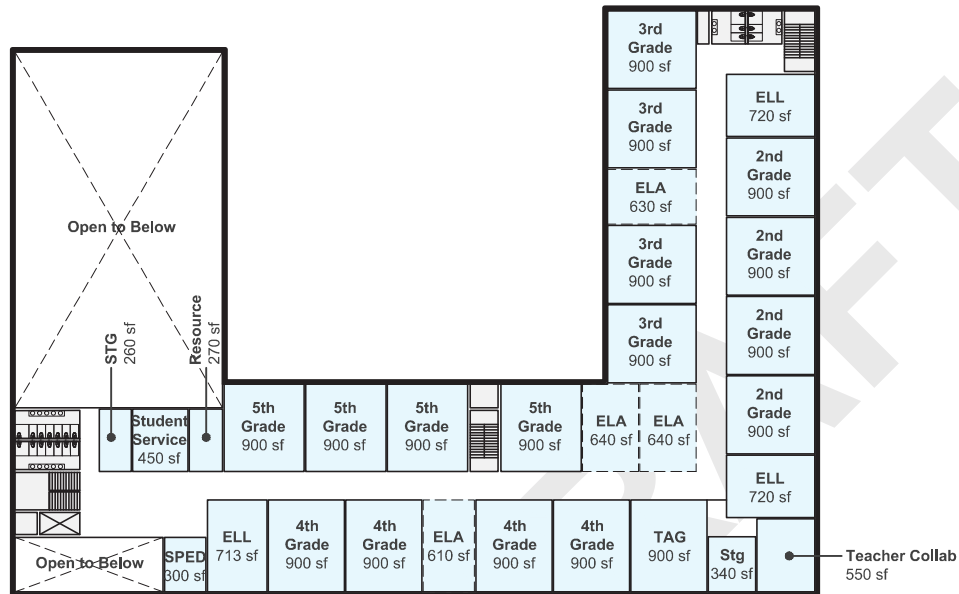
1. Total Gross Area: **114,385 SF**
2. Second Floor Gross Area: **42,042 SF**



**Masterplan Floor Plan New Construction Option 4**  
 Cora Kelly 3rd Floor

**Notes**

1. Total Gross Area: **114,385 SF**
2. Thid Floor Gross Area: **32,164 SF**



Cora Kelly Existing Program

Ed Spec Student Model

Use	Program Space	# of spaces	Avg SF / Room	Total SF	# of Spaces	SF / Room	Total SF				
Core Academic	Pre-K	1		830	8	1,175	9,400				
	Kindergarten	3	1,062	3,185	5	1,175	5,875				
	K-2	1		965							
	1st Grade	3	773	2,320	4	900	3,600				
	2nd Grade	3	715	2,145	4	900	3,600				
	3rd Grade	3	800	2,400	4	900	3,600				
	4th Grade	3	710	2,130	4	900	3,600				
	5th Grade	3	778	2,335	4	900	3,600				
	Extended Learning Area	2	775	1,550	5	600	3,000				
	Classroom Bathroom										
	Special Ed	2	775	1,550	3	250	750				
	Resource Classroom (Other)				2	250	500				
	TAG	1	800	800	1	900	900				
	Student Project Storage				1	150	150				
	Headstart	2	873	1,745	2	873	1,745				
	Citywide ED Program	4	733	2,930	4	733	2,932				
	STEM Specialist	1		1,255	1	1,255	1,255				
	Math Specialist	1		710	1	710	710				
	Reading Specialist	1		770	1	710	710				
	Sensory Room	1		275							
	Misc. Pullout	1		160							
	ELL	4	713	2,850	4	713	2,852				
	Student Services				4	100	400				
	Psychologist	1		215							
	Counselor	1		340							
	Speech Language Provider (SLP)	1		255							
	Occupational Therapist (OT)	1		310	1	400	400				
	Storage				4	200	800				
	Teacher Collab Room				5	250	1,250				
	Early Childhood Learning				1	2,000	2,000				
	Early Childhood Storage				1	200	200				
	<b>Total</b>			<b>32,025</b>			<b>53,829</b>	<b>21,804 SF Deficiency</b>	<b>40.51%</b>	<b>Deficiency</b>	
	Visual Art / Music / Science	Art Lab	1		805	1	1,200	1,200			
		Kiln Room				1	75	75			
Art Storage		1		300							
General Music Room					1	1,200	1,200				
Instrumental Music Room					1	1,000	1,000				
General Music Storage					1	150	150				
Instrument Storage					1	250	250				
Orchestra/Music		1		870							
<b>Total</b>				<b>1,975</b>			<b>3,875</b>	<b>1,900 SF Deficiency</b>	<b>49.03%</b>	<b>Deficiency</b>	
Media Center / Library	Reading / Learning / Circulation	1		4,375	1	3,000	3,000				
	Technical Processing Room				1	200	200				
	Combined Office / Workroom				1	200	200				
	Device / Changing Room				1	150	150				
	Storage				1	200	200				
	Small Group Room				2	150	300				
	Computer Lab	1		755							
	<b>Total</b>			<b>5,130</b>			<b>4,050</b>	<b>-1,080 SF (Excess)</b>	<b>-26.67%</b>	<b>(Increase)</b>	
Physical Education	Gymnasium	1		9,265	1	6,500	6,500				
	PE Office				2	150	300				
	PE Storage				2	250	500				
	Multi-Purpose	-		-	1	1,500	1,500				
<b>Total</b>			<b>9,265</b>			<b>8,800</b>	<b>Uses Existing Rec Center</b>				
Student Dining and Food Services	Student Dining Area	1		3,725	1	3,000	3,000				
	Chair and Table Storage				1	350	350				
	Serving Area				1	700	700				
	Kitchen Suite	1		1,655	1	2,150	2,150				
	Stage with Storage				1	1,100	1,100				
<b>Total</b>			<b>5,380</b>			<b>7,300</b>	<b>1,920 SF Deficiency</b>	<b>26.30%</b>	<b>Deficiency</b>		
Administration	Lobby	1		565	1	700	700				
	Welcome Center	1		390	1	450	450				
	Conference Room	1		230	1	250	250				
	Principals Office	1		220	1	180	180				
	Asst. Principals Office				1	150	150				
	Misc. Office	1		270							
	Administrators' Workroom	2		370	1	200	200				
	Teacher Lounge	1		450							
	Mail Room				1	125	125				
	Records Room				1	150	150				
	Family and Community Engagement				1	470	470				
	Staff Toilet				1	50	50				
	Student Services Office				2	150	300				
	Student Services Conference				1	200	200				
	Health Suite	1		650	1	900	900				
	Child and Family Network	1		710	1	710	710				
	Data/Instructional Coach	1		235							
After School Storage				1	250	250					
<b>Total</b>			<b>4,090</b>			<b>5,085</b>	<b>995 SF Deficiency</b>	<b>19.57%</b>	<b>Deficiency</b>		
Maint./ Custodial Services	Total			60			850	<b>790 SF Deficiency</b>	<b>92.94%</b>	<b>Deficiency</b>	
Building Services and Restrooms	Corridors			12,625			13,400				
	Other Services and Restrooms			2,760			8,600				
	<b>Total</b>			<b>15,385</b>			<b>22,000</b>	<b>6,615 SF Deficiency</b>	<b>30.07%</b>	<b>Deficiency</b>	
Total Net Area (sf)				<b>73,310</b>			<b>105,789</b>	<b>32,479 SF Deficiency</b>	<b>30.70%</b>	<b>Deficiency</b>	
Total Gross Bldg. Area (sf)				<b>76,840</b>			<b>114,464</b>	<b>37,624 SF Deficiency</b>	<b>32.87%</b>	<b>Deficiency</b>	